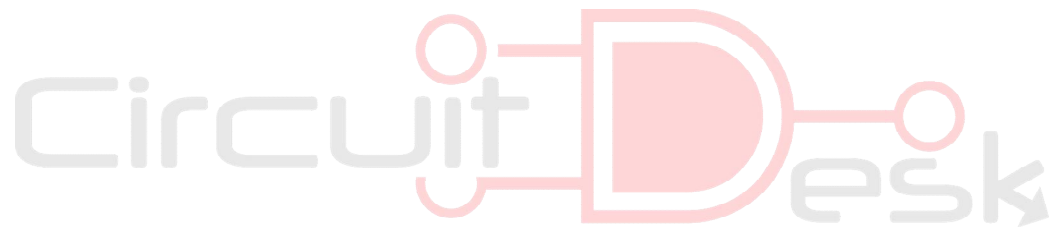


www.circuitdesk.com

IR Switcher

Instruction Manual

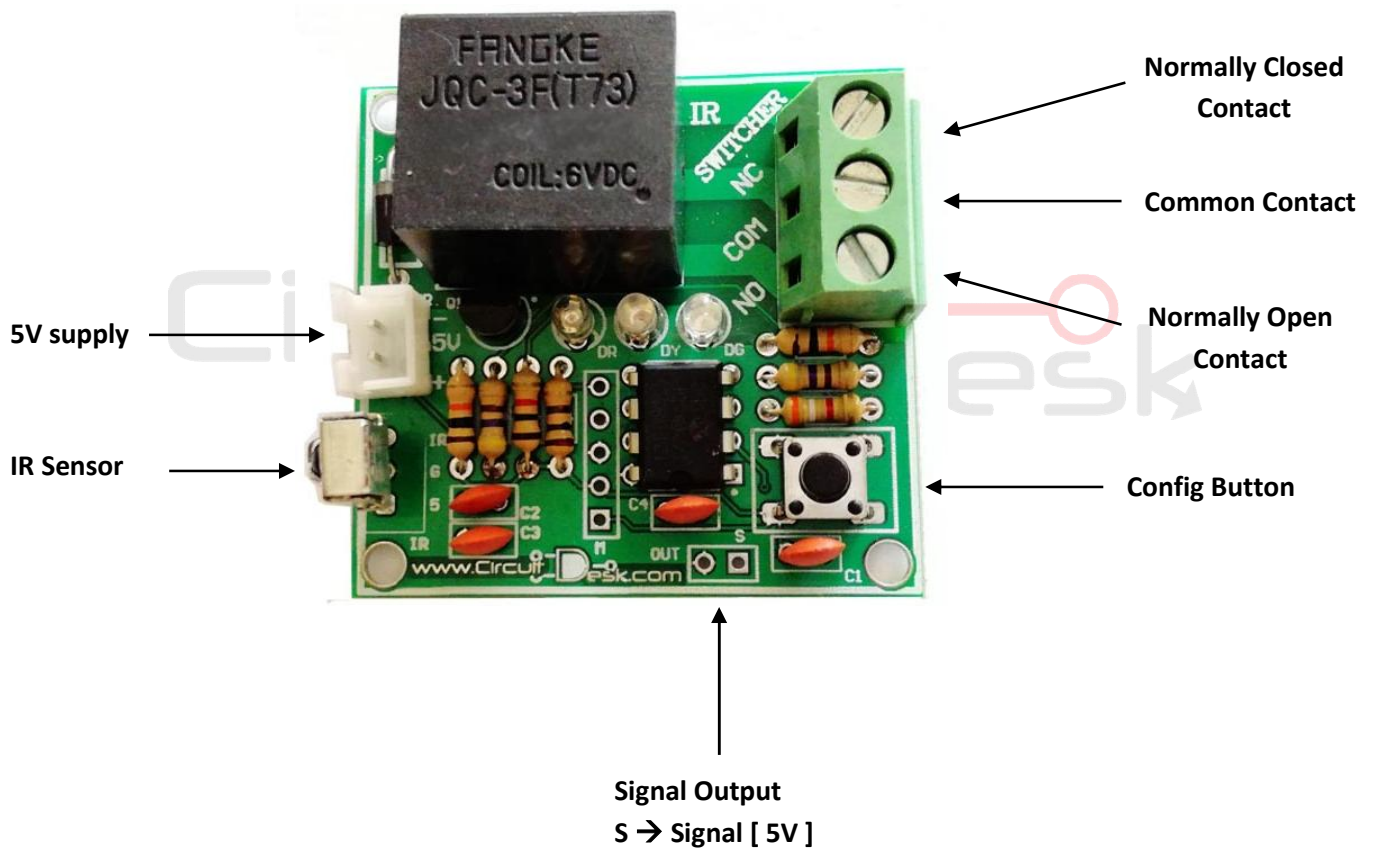


What's this?

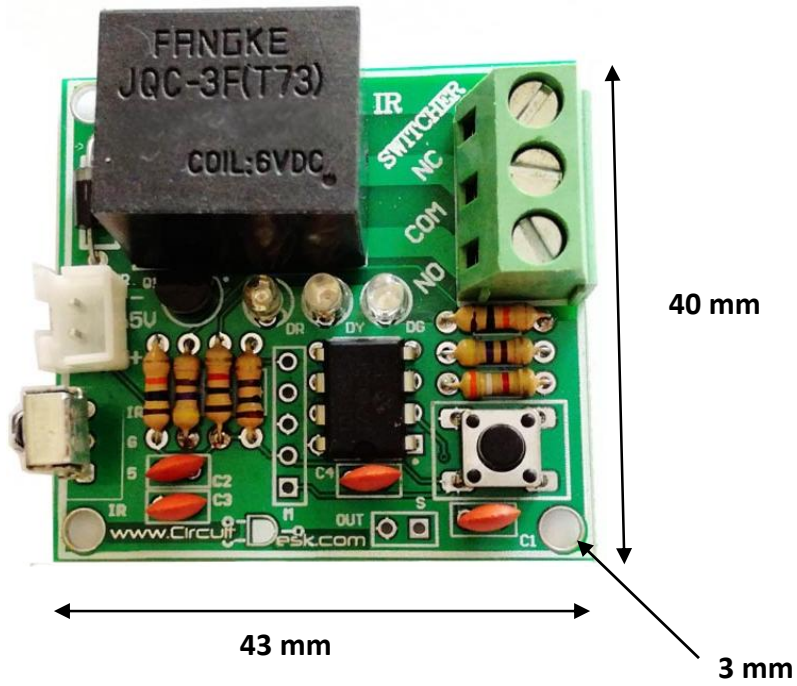
IR switcher is a small unit that helps you to add remote control functionality to your device or the project.

It can be programmed to work with any remote you can find 😊

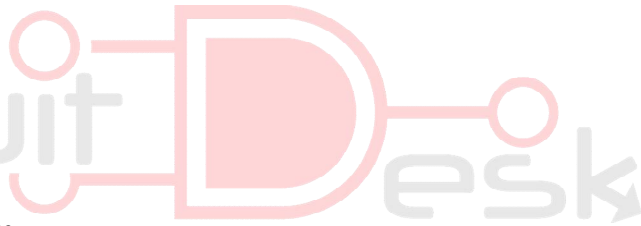
Know your Switcher



How much space does it take?



Length	43 mm
Width	40 mm
Height	19 mm
Mounting Holes	4 x 3 mm



Modes of operation

IR switcher has 2 modes of operation

1. General Mode
2. Default ON Mode

General Mode

In this mode, Relay of the IR switcher will be turned off as you supply the power to the switcher. To turn on the relay, press the programmed button of your remote. To turn off press the remote button again.

When relay is on, if you remove the power to IR switcher and power it back, relay will be in turned off state until you turn it on using the remote

Default ON mode

In this mode Relay will be turned on as soon as you power up the IR switcher. Then if you press the button of the remote, relay will turn off and if you press it again relay will turn on.

If you disconnect and reconnect power to IR switcher, relay will go to turn on state.

One application of this mode is for your room light. If you connect IR switcher to your room light using this mode, then you can turn on your light using the wall switch and turn it off using the remote. Imagine, at night you come to the room, turn on the light using the wall switch, go to bed and you can turn off the light with the remote 😊

Configuring the IR switcher

Programming the switcher for a remote control

IR switcher can be programmed to work with any IR remote you already have or find in a store, and configuration takes less than minute 😊

Steps:

1. Power up the IR switcher
2. Press and hold the config button until both yellow and green LEDs starts to blink.
3. Release the button as soon as both yellow and green LEDs start to blink.
4. Wait until only yellow LED is turned on
5. Now point your remote toward the IR sensor and press and release the selected button of the remote once. (you will see RED LED flicker as you press and release the button)
6. Now press and release the config button of the IR switcher once. Yellow LED will turn off and green LED will turn on
7. Again point your remote toward the IR sensor and press and release the selected button of the remote once. (you will see RED LED flicker as you press and release the button)
8. Now press and release the config button of the IR switcher once again and both yellow and green LEDs will rapidly blink. Wait until both LEDs are turned off
9. Now the IR switcher is linked with the button of your remote.
10. You can turn on and off the relay with the button of the remote

Changing the mode of operation

Out of the box IR switcher will work in General mode of operation.

You can easily change the mode between General & Default ON using the config button

Once you change the mode, it will work in that mode until you do a mode change again

Steps:

1. Remove power from the IR switcher
2. Press and hold config button and apply power back
3. Keep the button pressed until the Green LED starts to blink
4. Now release the button
5. Once the blinking is stopped, Mode change is completed.

If green LED remains on, you are in Default ON mode

If green LED remains off, you are in General mode

Compatibility

We have tested the IR switcher with remote controls from major brands like Sony, Samsung etc and bunch other Chinese brands

Full list of remotes we tested for compatibility is as follow

Sony	Panasonic	Hitachi	Sharp
Mitshubishi	Toshiba	Philips	Samsung
Sanyo	Nec	Daewoo	JVC
LG	Haier	HISENSE	SKYWORTH
TCL	MEILE	SHAOFENG	KONGQUE
CHUNLAN	TIANE	XIAHUA	YOULANAS
GANXIN	JINGXING	XIHU	FEILANG
PDLYTRON	BAIHUA	SHENGCAI	KANGLI
XIANGYANG	JINLIPU	INTEL	HUODATEJI
XINXIBAN	KUNLUN	WEIPAI	CHUANGJIANG
JINGTA	NANSHENG	WARUMAIA	SANKEN
DONGDA	RIHONG	FEIYUE	HUAFA
OLING	XINGRISONG	CAHNGFENG	HONGYAN
AKAI	XINMENGBAN	RUYI	YUHANG
SHANSHUI	LONGJIA	CHUNSUN	BAOHUASHI
XUELIAN	FURI	BeiJing	HONGMEI
JIALICAI	MENGMEI	TCL	CHANGFEI
KANGHONG	TIANGENGBAN	RISHENG	DIGITEC
DETRON	CHUNGFENG	KAIGE	DONGJIE
CHANGHAI	KANGHUA	YINGGE	HUANGLONG
ROWA	XINSIDA	JINGFENG	TIANKEBAN
SANYUAN	SHUYUAN	SHERWOOD	SKYWORTH
HUAQIANG	FULI	SONGRI	MUDAN
888PAI	DONGLING	BAIHEHUA	SONGBAI
BAOSHENG	SHANGHAI	HAILE	ANHUA
FUSHITONG	XIANGYU	KANGYI	SANLING
SANJIAN	TAISHAN	Haier	YONGGU
SEYE	CHANGCHENG	HAIYAN	RIZHI
HUANYU	LIHUA	NIKOA	QINGDAO
HUANGHAIMEI	DONGHAI	ZHUHAI	SUMO
KUAILE	SAIGE	BAILE	HAIHONG
JJINGQUE	CHENGDOU	HISENSE	JIAHUA

Remarks:

It's possible that IR switcher will not be able to work with buttons associated with incremental functions (such as volume up-down, program up-down etc) as these buttons do not send a fixed signal.