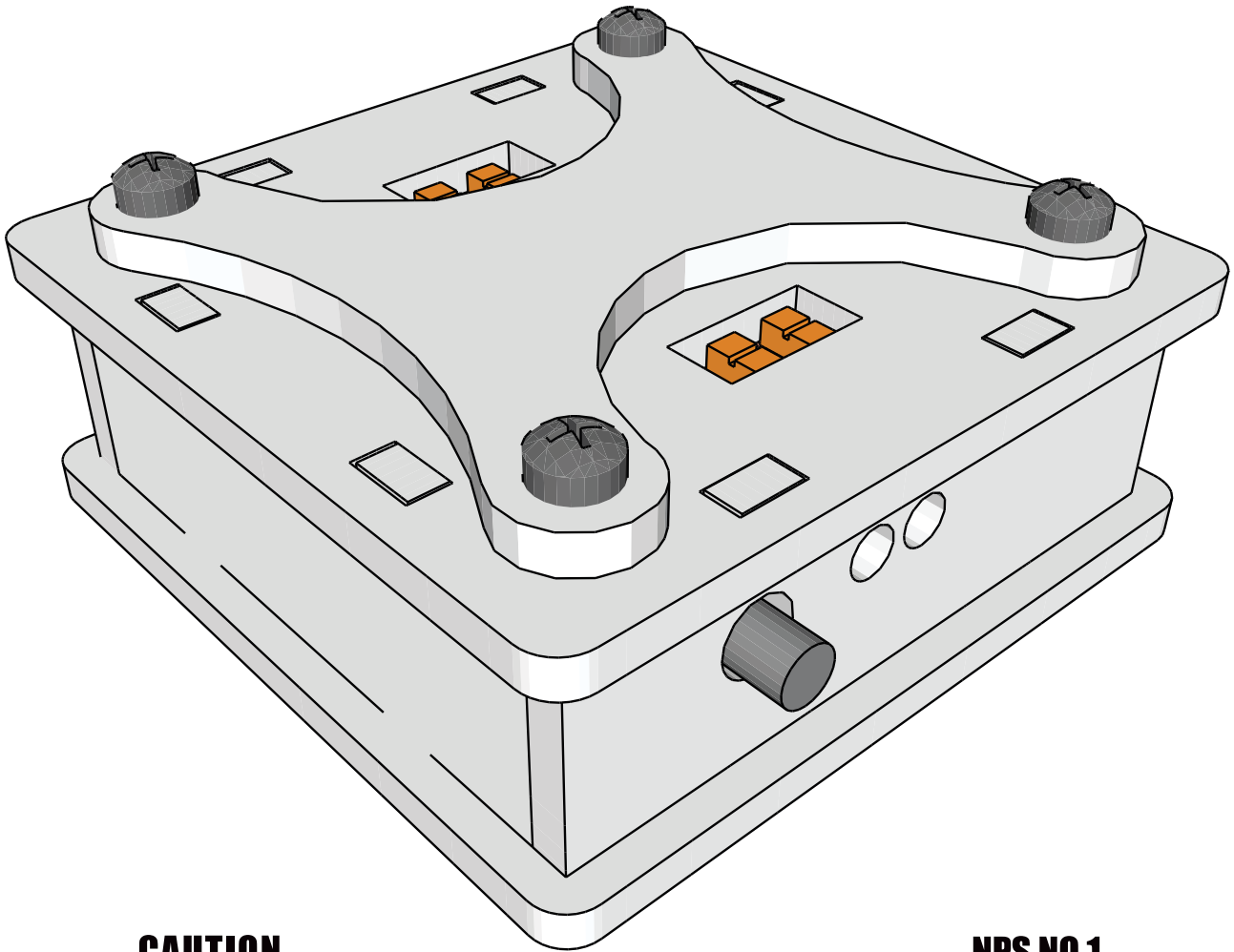
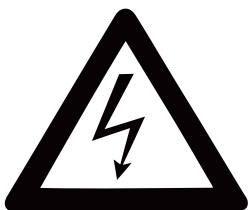




● NIXIE POWER SUPPLY - SELF ASSEMBLY KIT



CAUTION



RISK OF ELECTRIC SHOCK

NPS NO.1

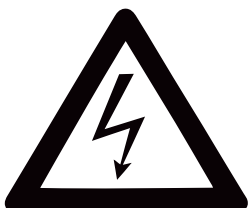


WWW.NIXIE.NINJA



- **NIXIE POWER SUPPLY - SELF ASSEMBLY KIT**
- **INPUT VOLTAGE - VIN: 12V TO 30V**
- **OUTPUT VOLTAGE - VOUT: 125V TO 200V**
- **OUTPUT POWER - 4W: ~25mA; 170V**
- **EFFICIENCY: ~85%**

CAUTION



RISK OF ELECTRIC SHOCK

NPS NO.1



WWW.NIXIE.NINJA

NIXIE POWER SUPPLY KIT COMPONENTS

● **ASSEMBLY INSTRUCTION**

● **PCB 50 x 50mm**

● **CASING 31 x 62 x 62mm**

● **ELECTRONIC COMPONENTS:**

● **R1 - 0,22R; 2W**

● **R2 - 1K**

● **R3 - 680K; 1%**

● **R4 - 4,3K; 1%**

● **R5 - 2,5K**

● **POTENTIOMETER KNOB**

● **D1 - 1N4148**

● **D2 - MUR1100**

● **C1 - 680pF**

● **C2 - 10nF**

● **C3 - 2,2uF; 250V**

● **C4 - 220uF; 25V**

● **T1 - BC556**

● **T2 - IRF840**

● **L1 - CHOKE 150uH; 3A**

● **J1, J2 - VIN, VOUT CONNECTORS**

● **U1 - MC34063**

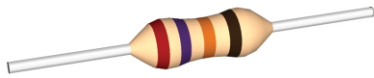
● **IC SOCKET DIL8**

● **SPACER 12mm x 4**

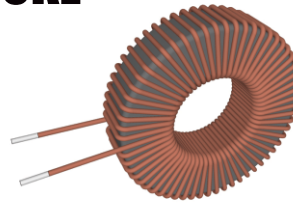
● **SCREW 12mm M3 x 8**

PICTURES OF KIT COMPONENTS

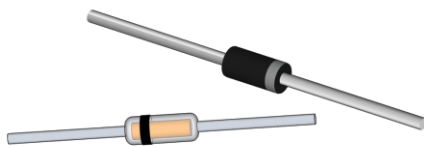
● RESISTORS



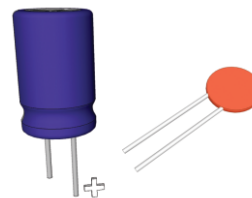
● CHOKE



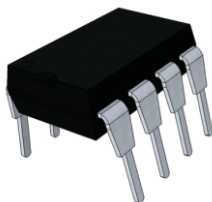
● DIODES



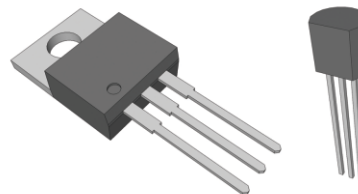
● CAPACITORS



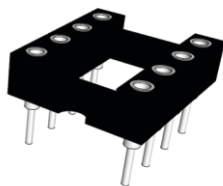
● IC



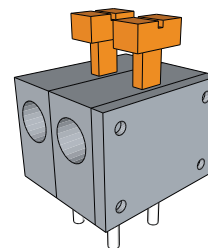
● TRANSISTORS



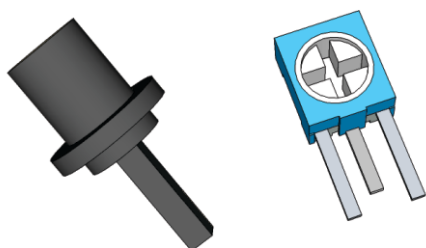
● IC SOCKET



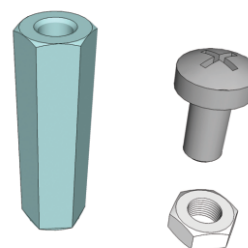
● VIN/VOUT CONNECTORS



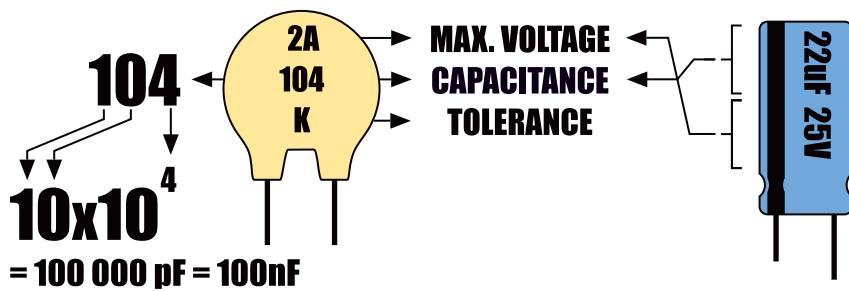
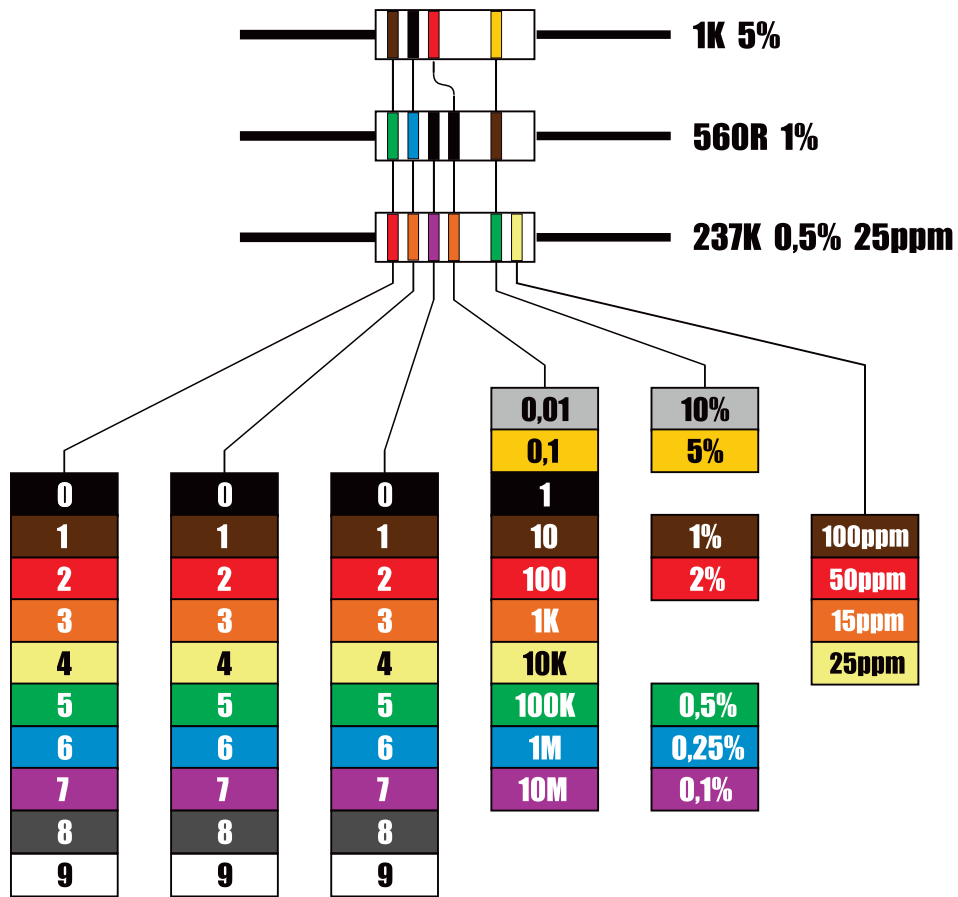
● POTENTIOMETER & KNOB



● SPACERS & SCREWS



RESISTORS & CAPACITORS MARKING



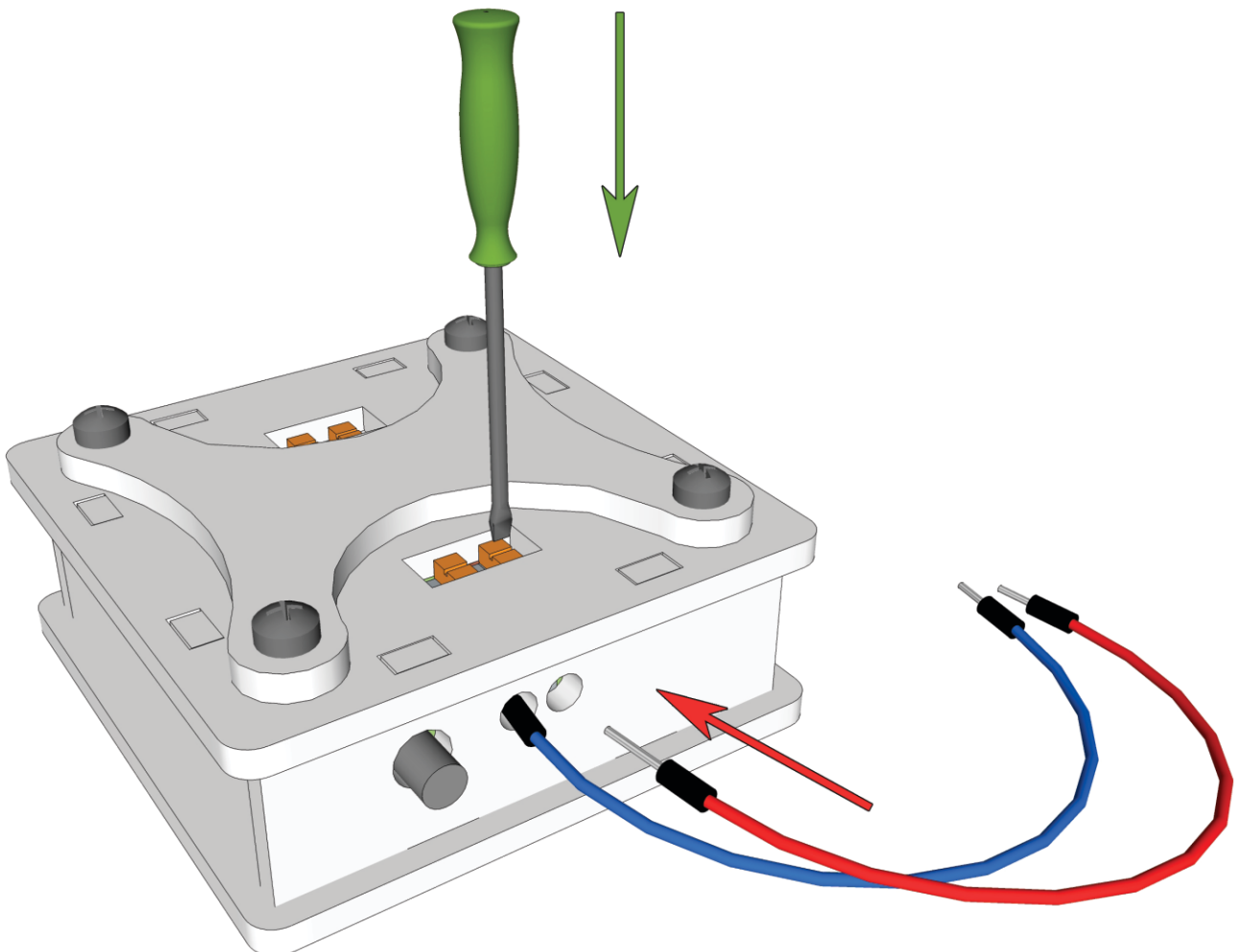
MAX. OPERATING VOLTAGE	
1H	50V
2A	100V
2T	150V
2D	200V
2E	250V
2G	400V
2J	630V

TOLERANCE	
B	0,1pF
C	0,25pF
D	0,5pF
F	1%
G	2%
H	3%
J	5%
K	10%
M	20%
Z	+80%, -20%

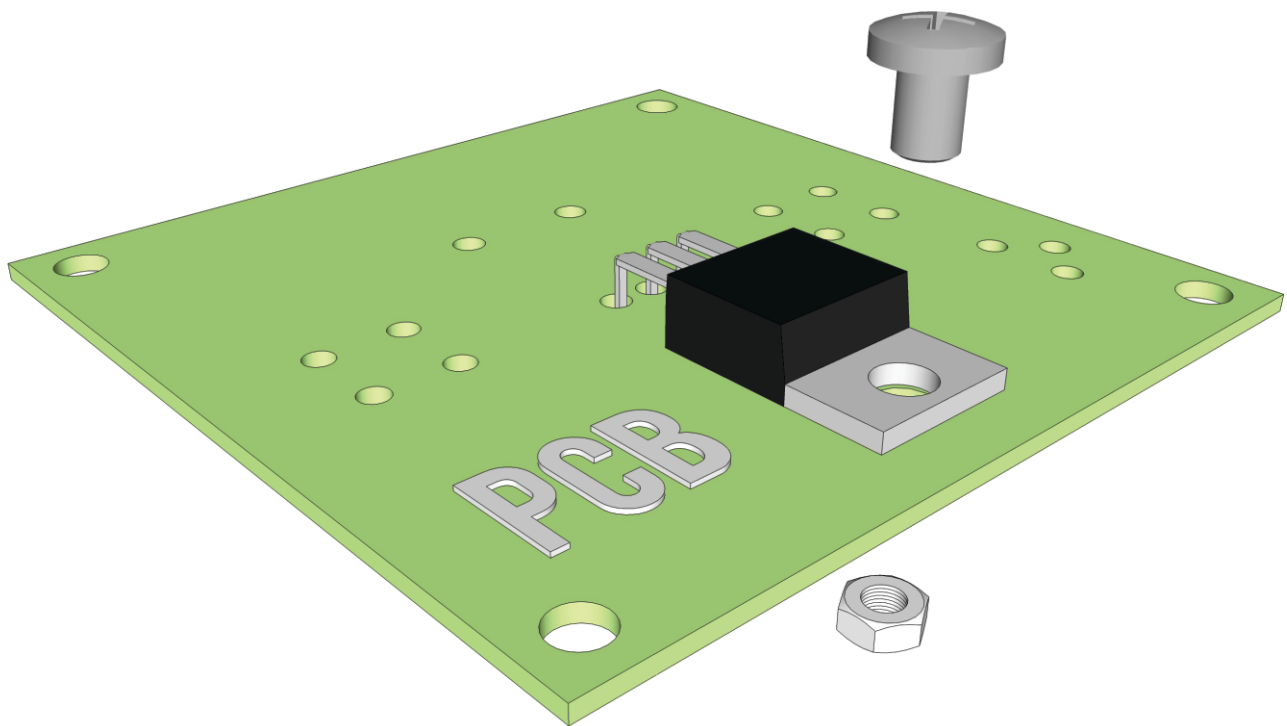
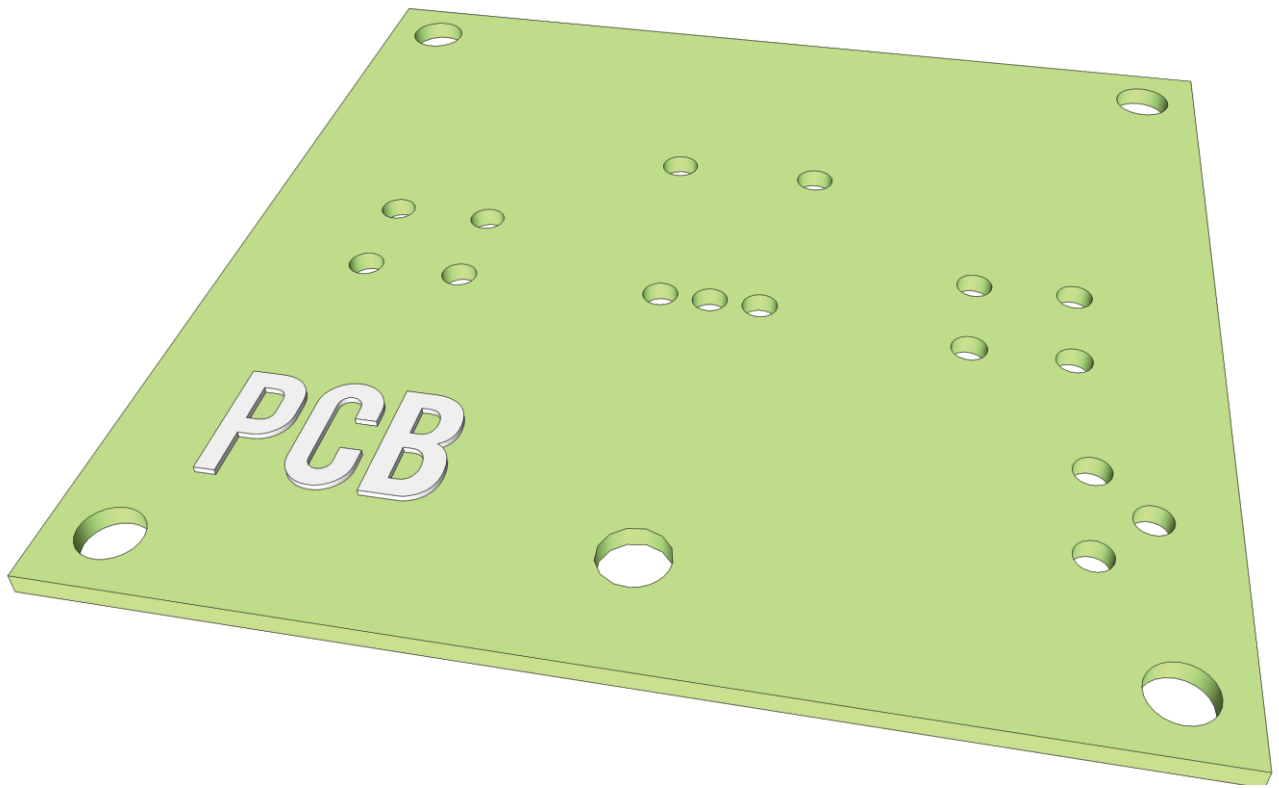


HOW TO OPERATE NIXIE POWER SUPPLY

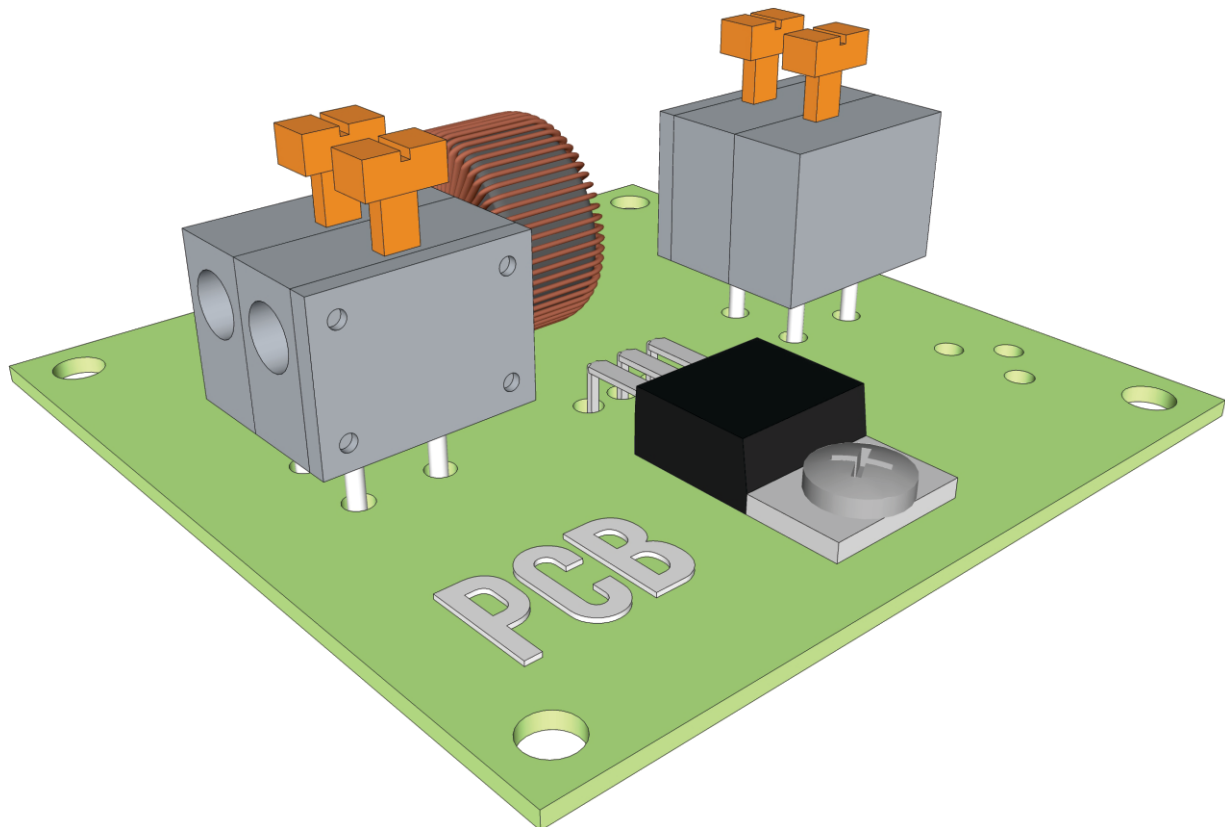
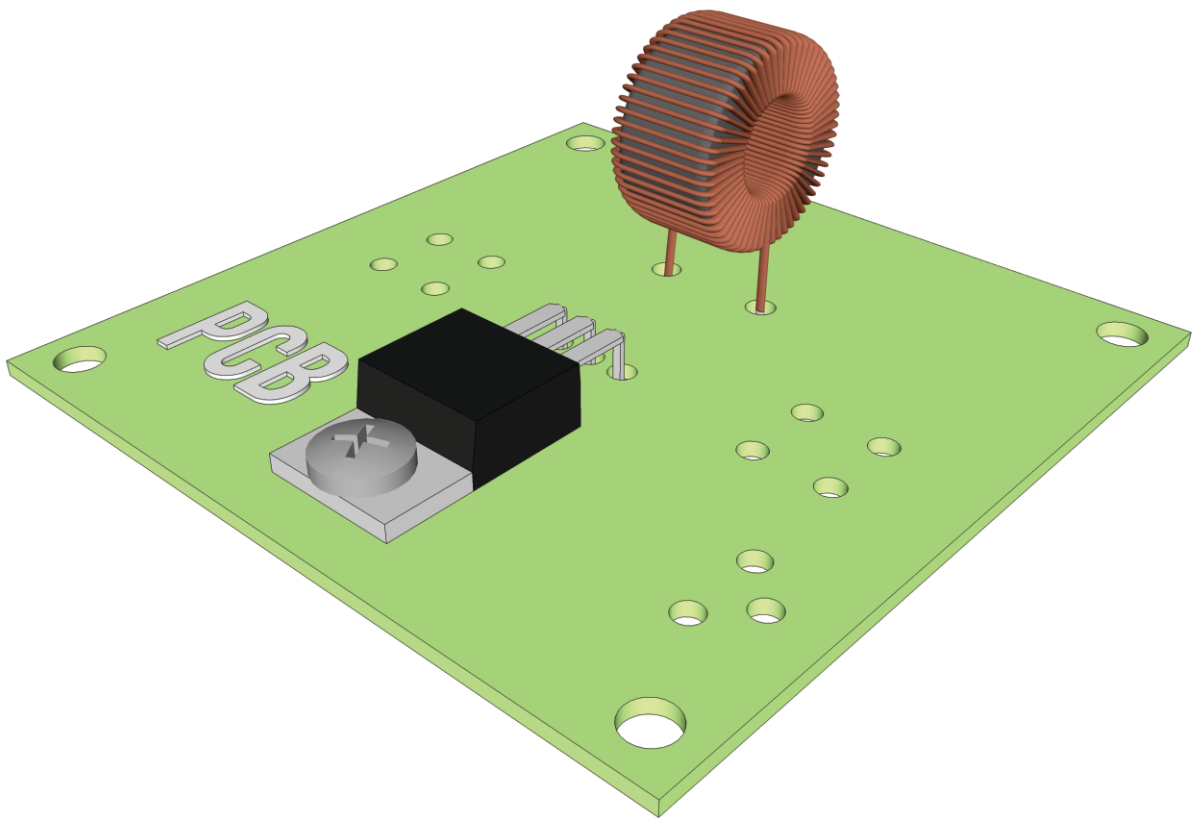
- **USE A SCREWDRIVER AND PUSH THE LATCH**
- **INSERT CABLES TO SLOTS**
- **POWER ON AND SET THE PROPER VOLTAGE**



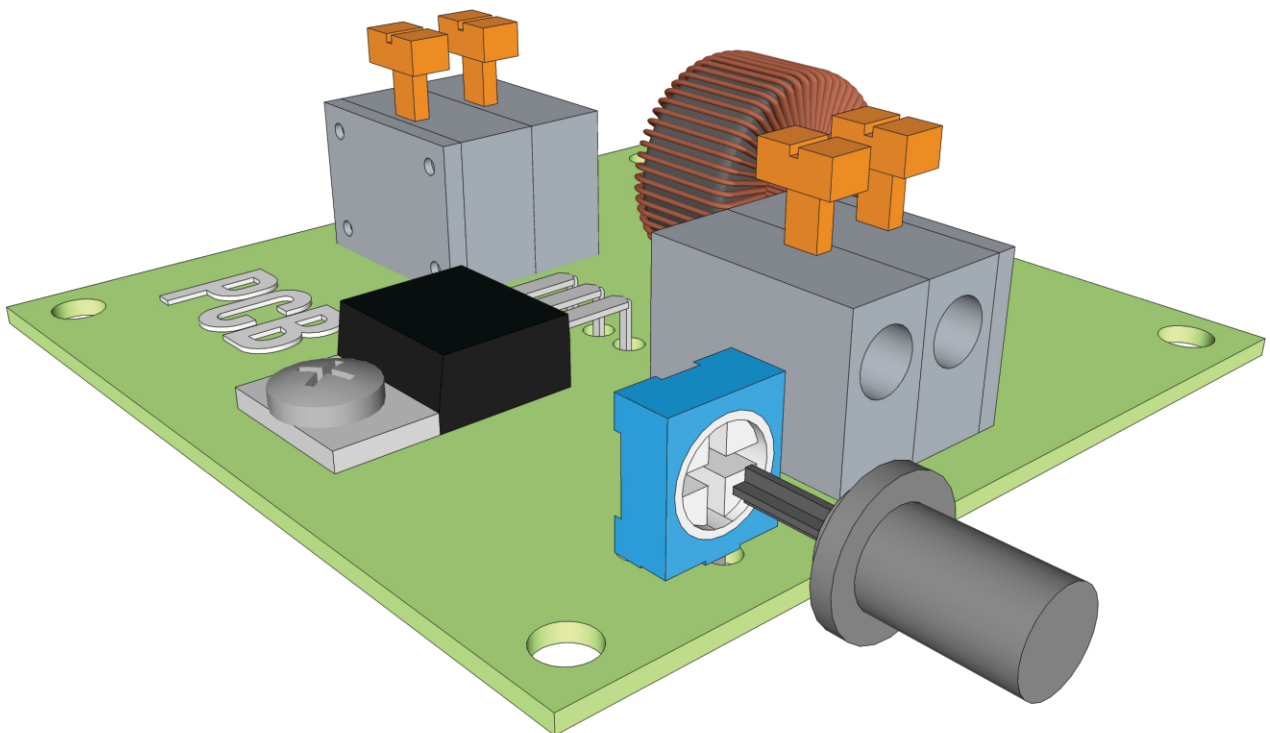
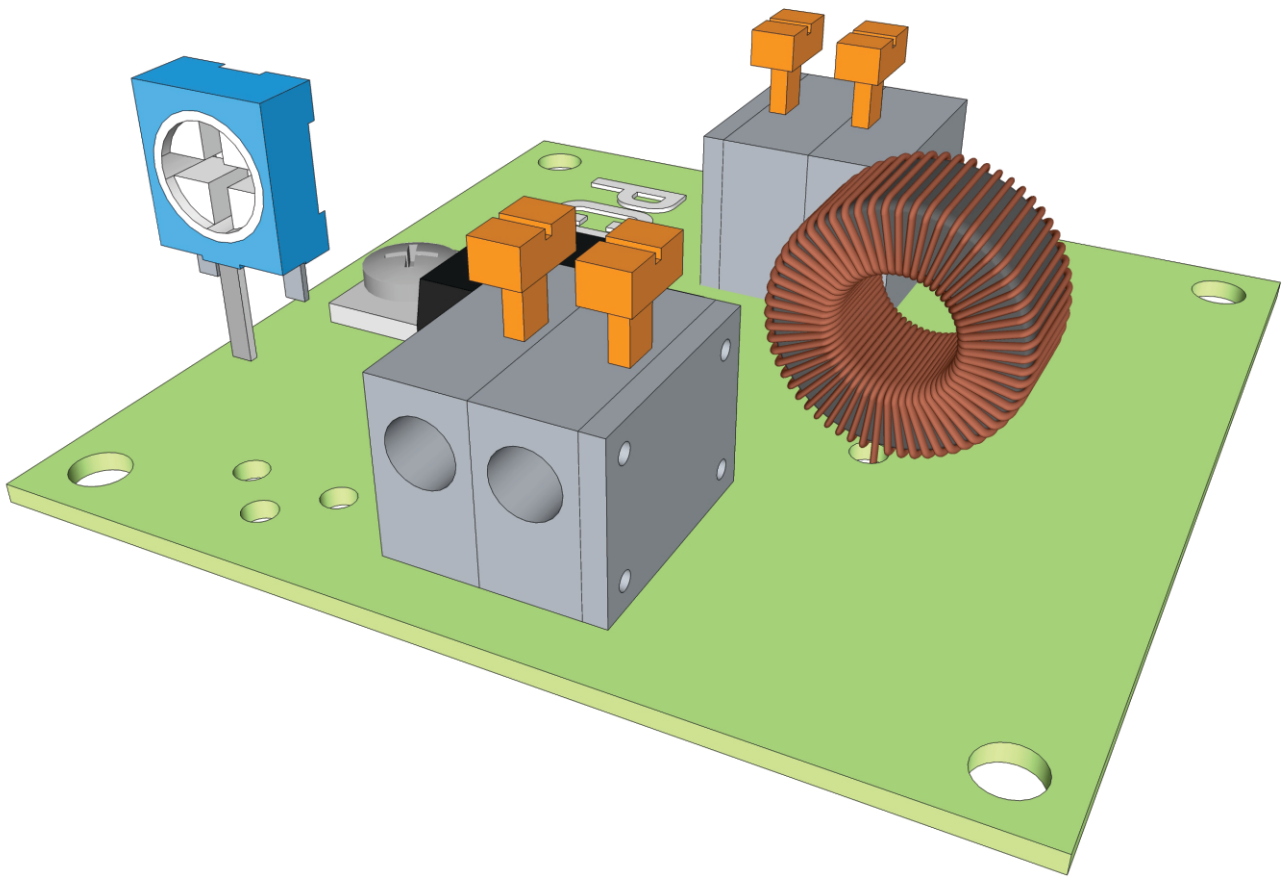
SOLDERING & ASSEMBLY 1/4



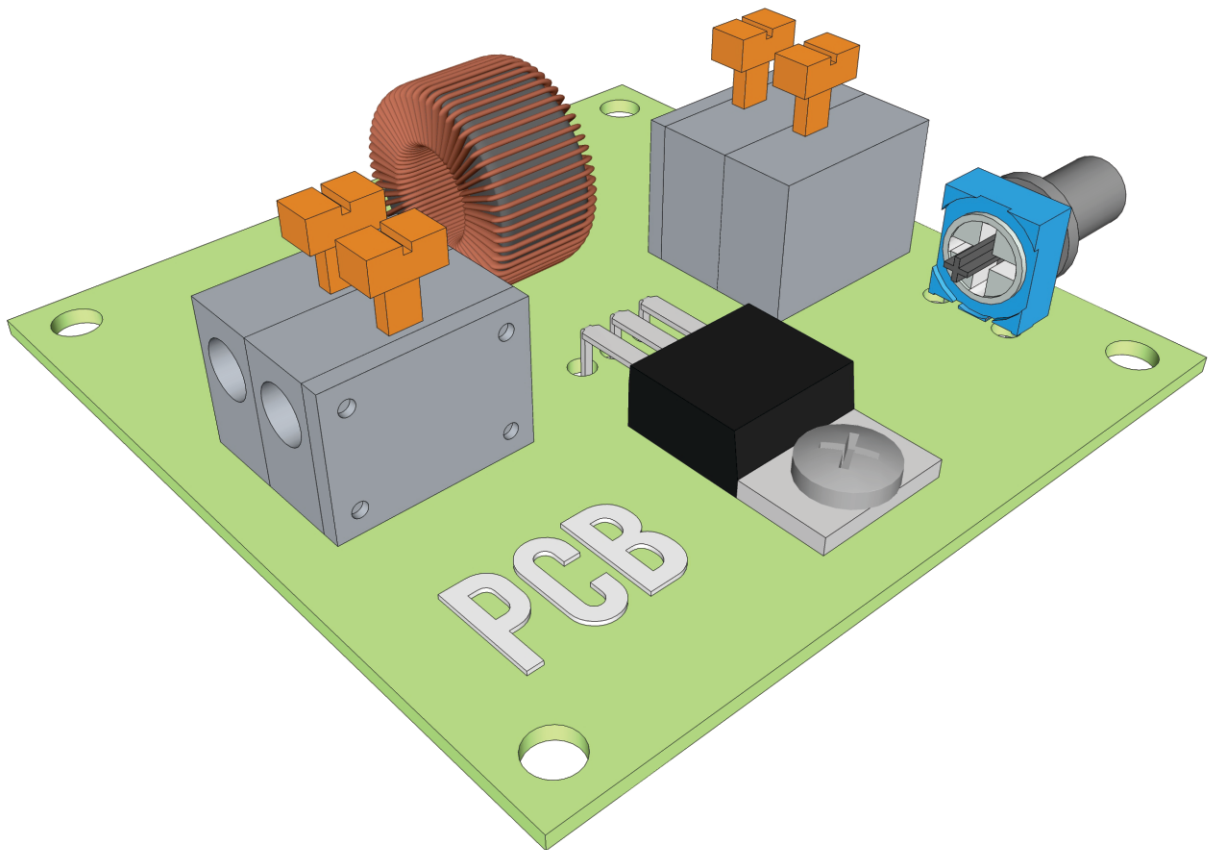
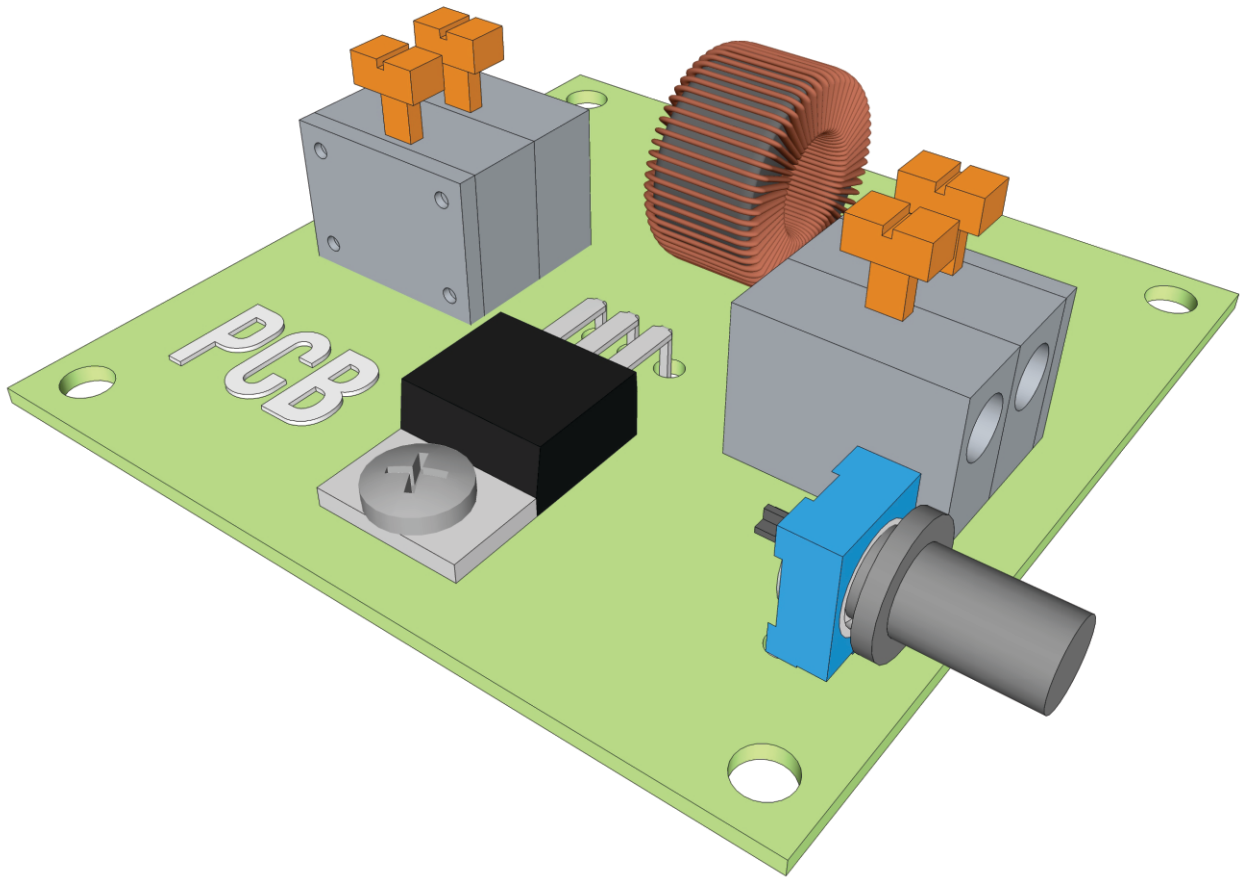
SOLDERING & ASSEMBLY 2/4



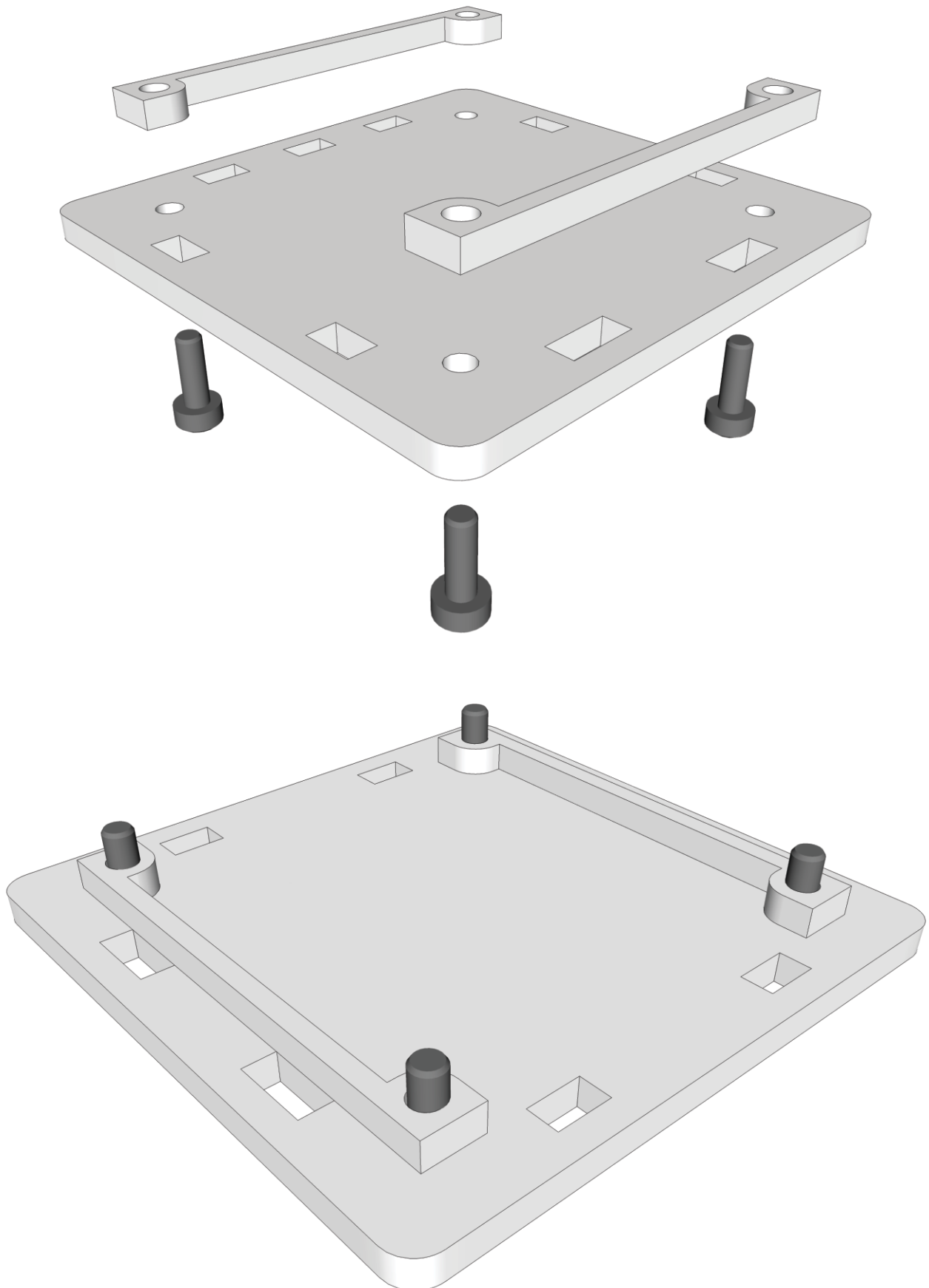
SOLDERING & ASSEMBLY 3/4



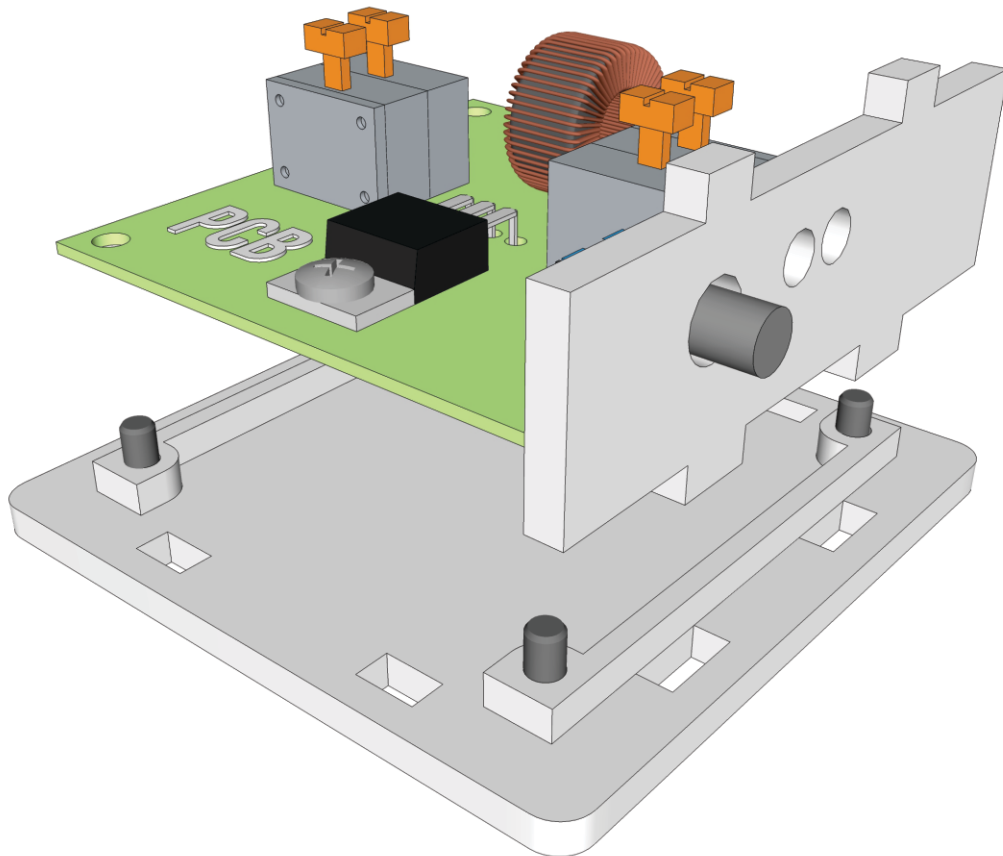
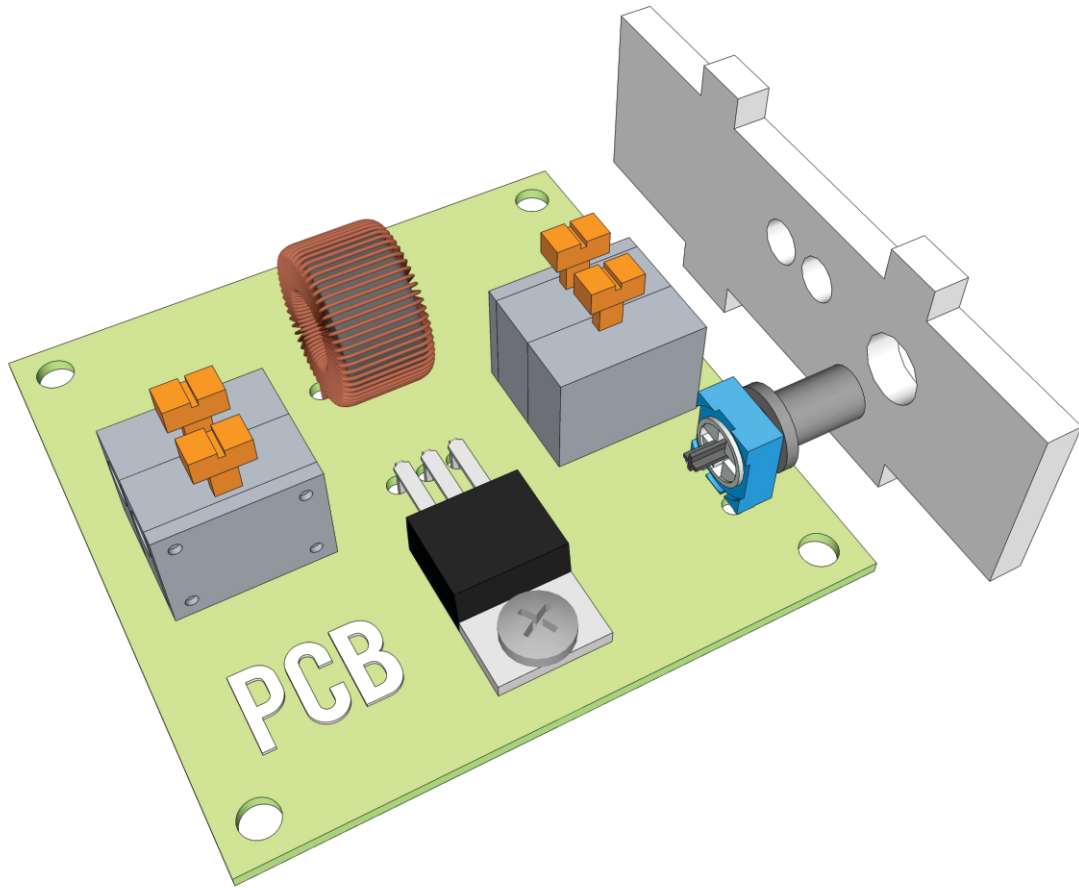
SOLDERING & ASSEMBLY 4/4



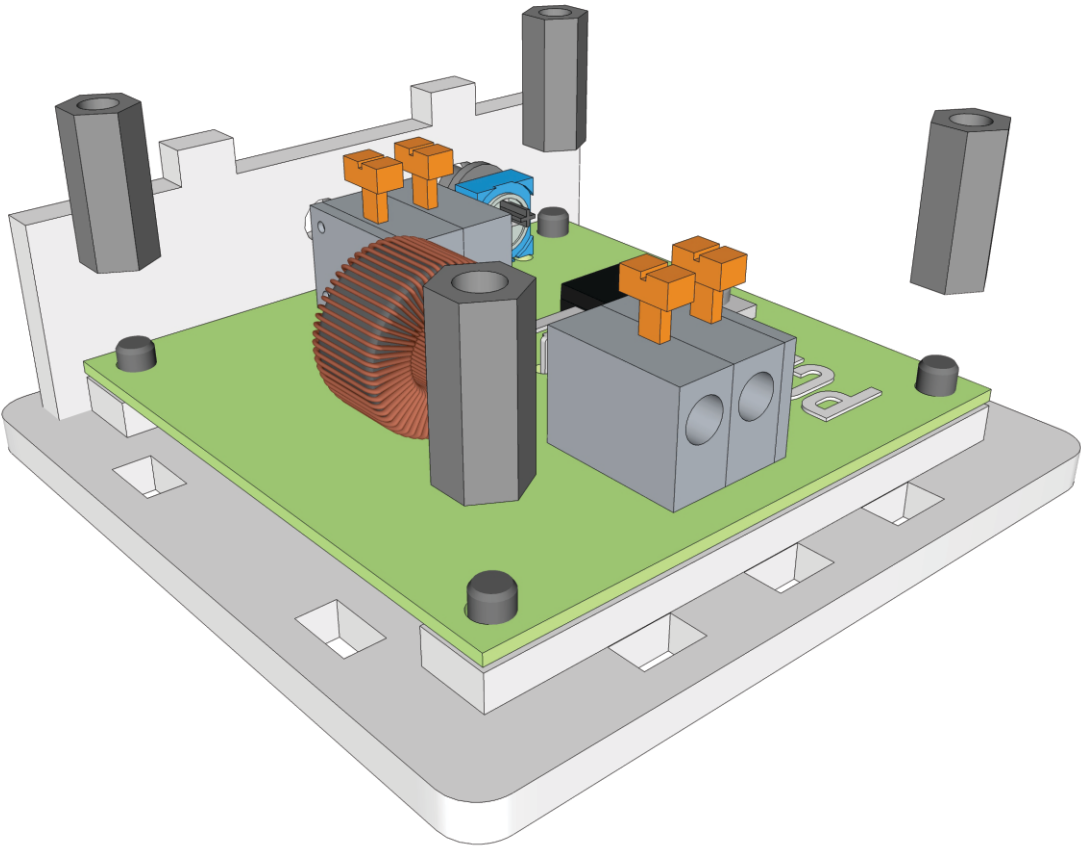
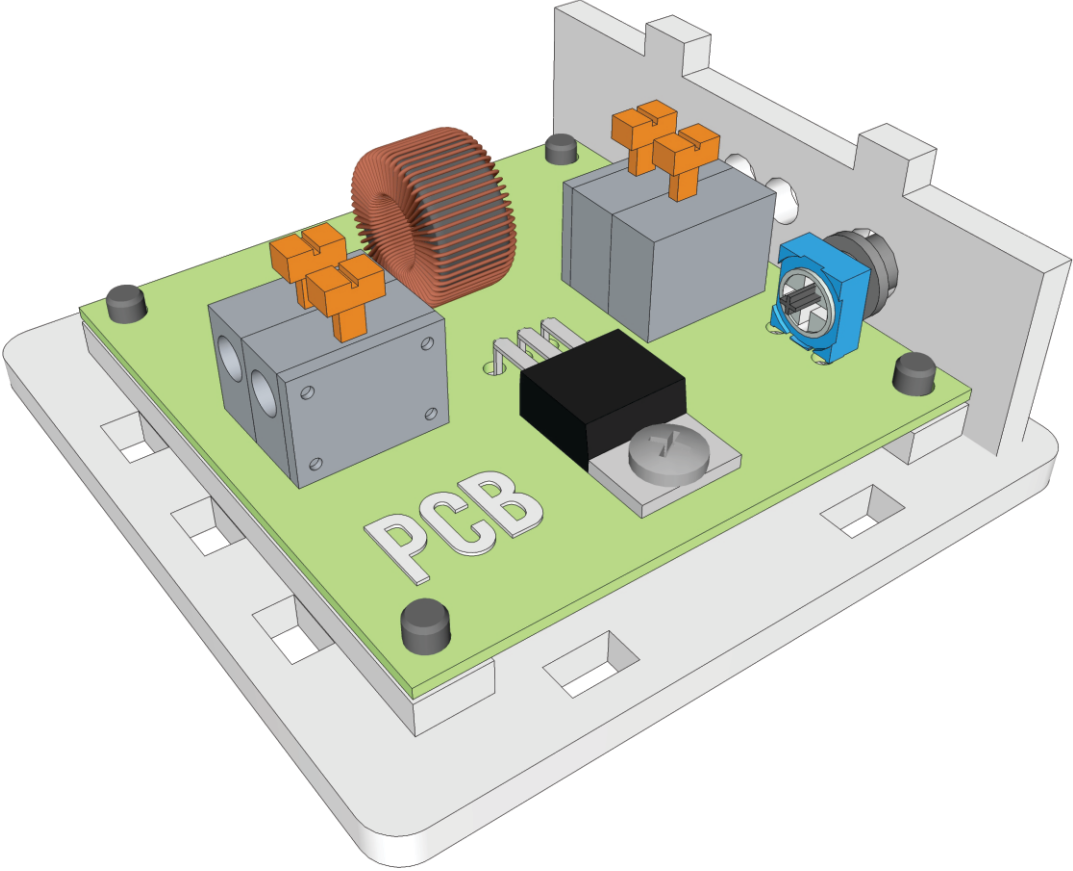
CASING ASSEMBLY 1/6



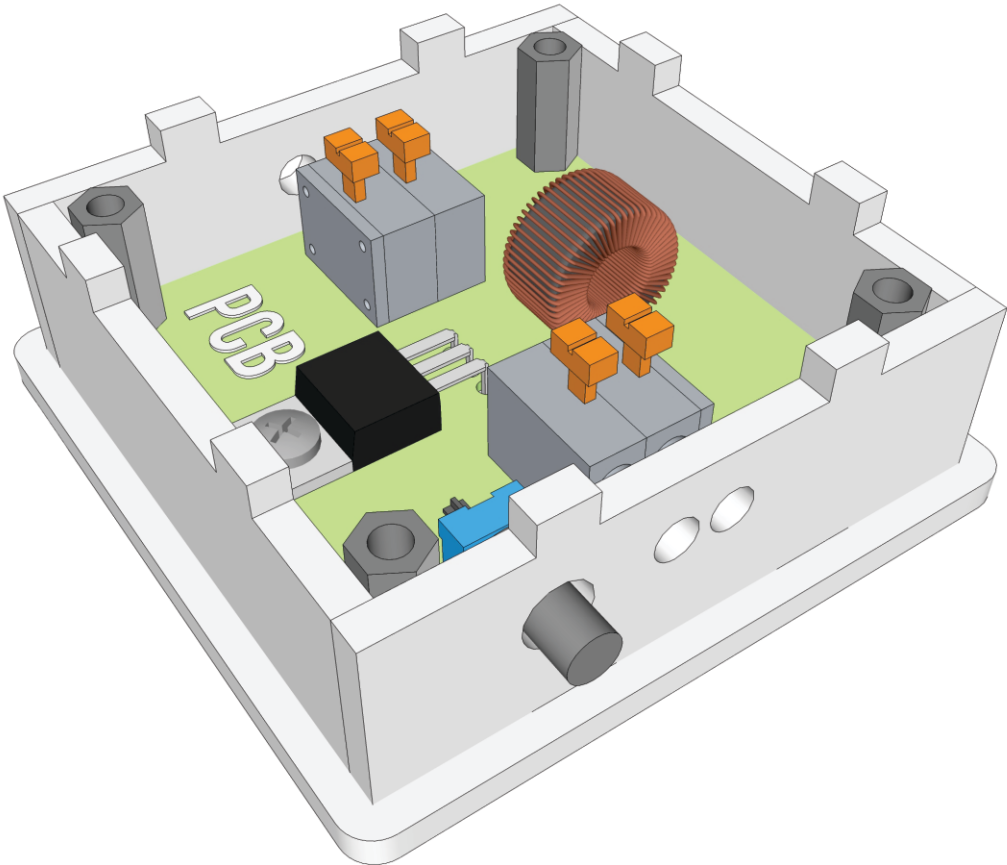
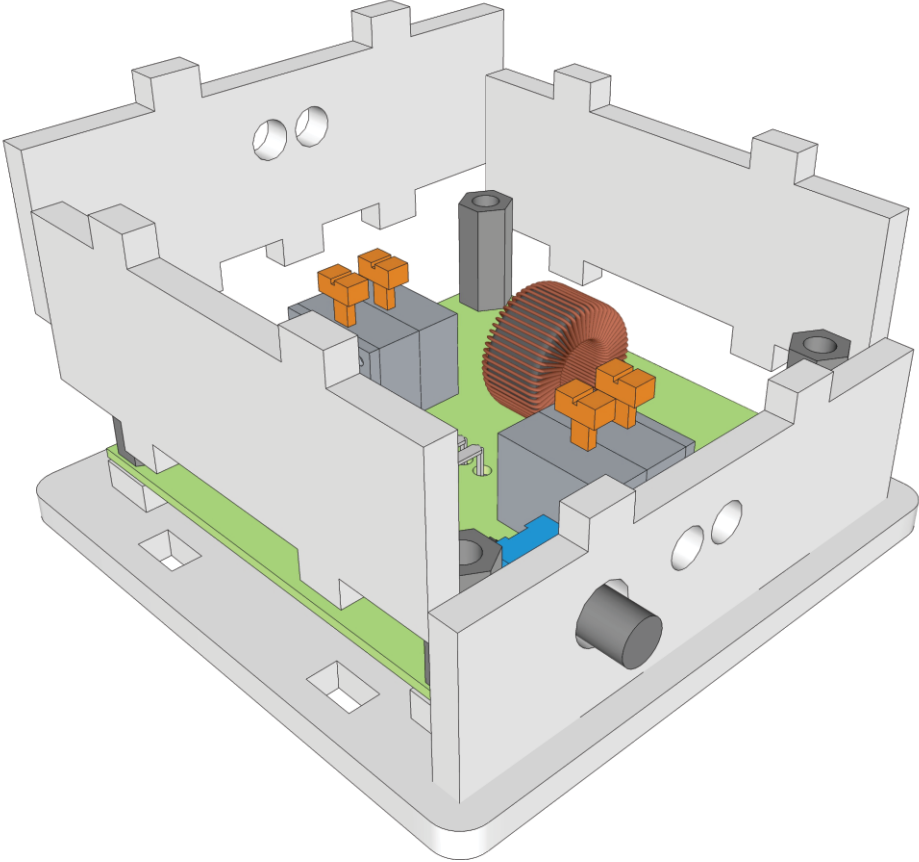
CASING ASSEMBLY 2/6



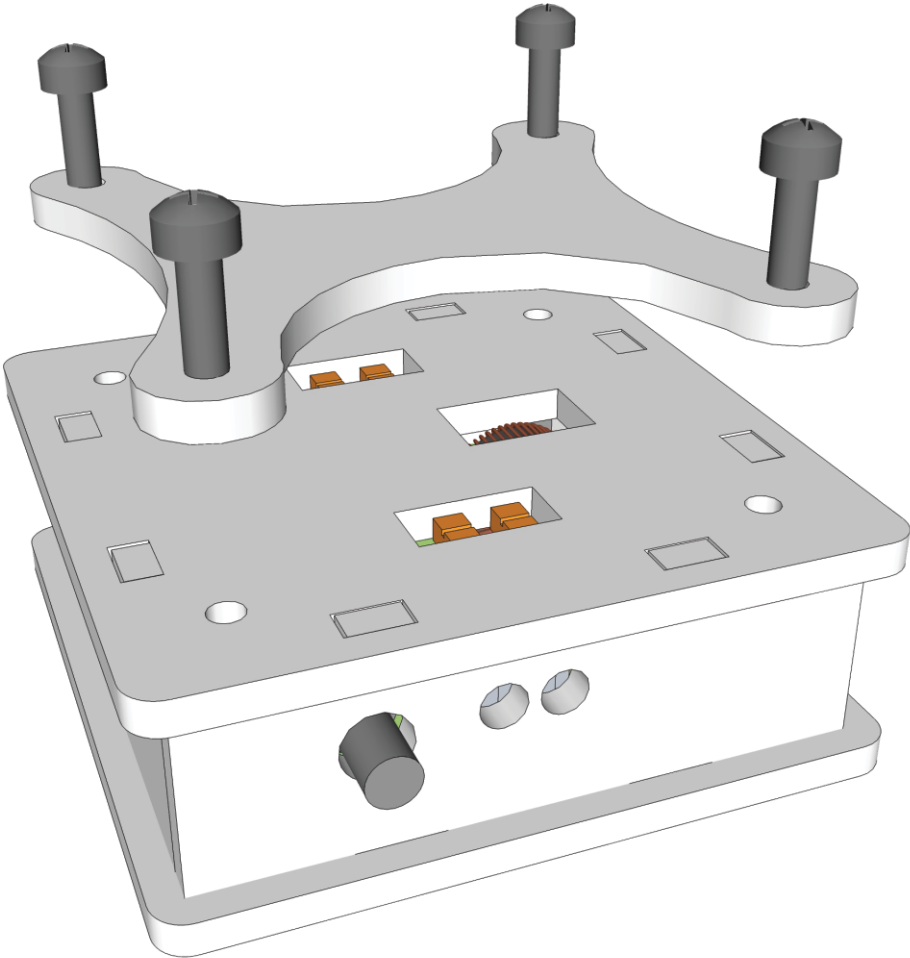
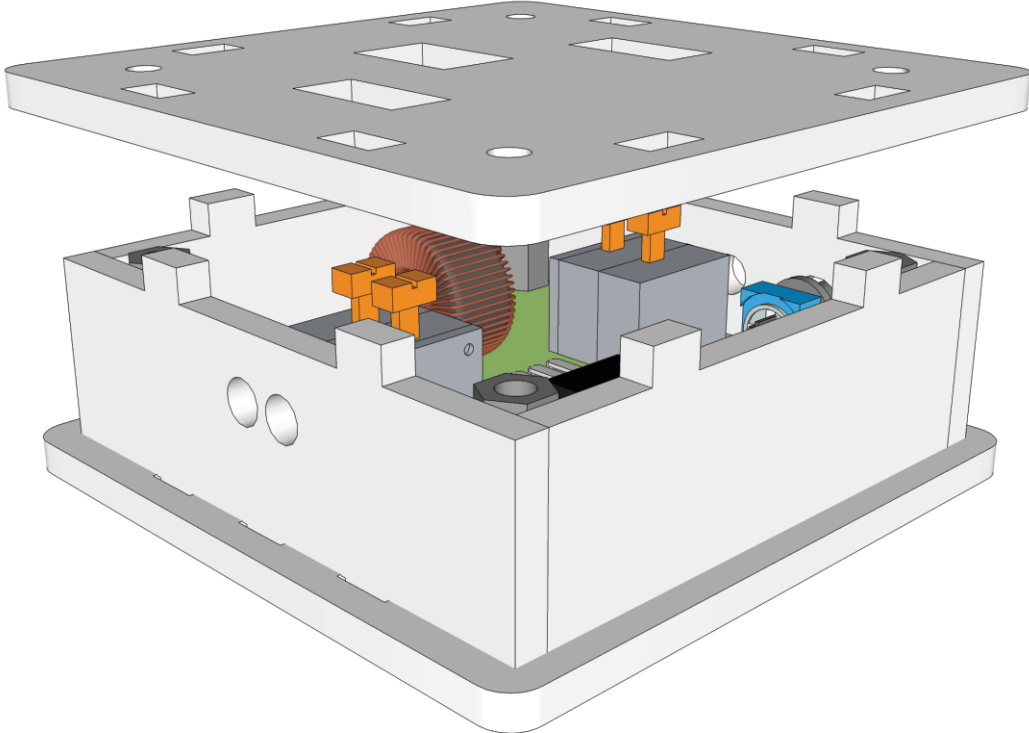
CASING ASSEMBLY 3/6



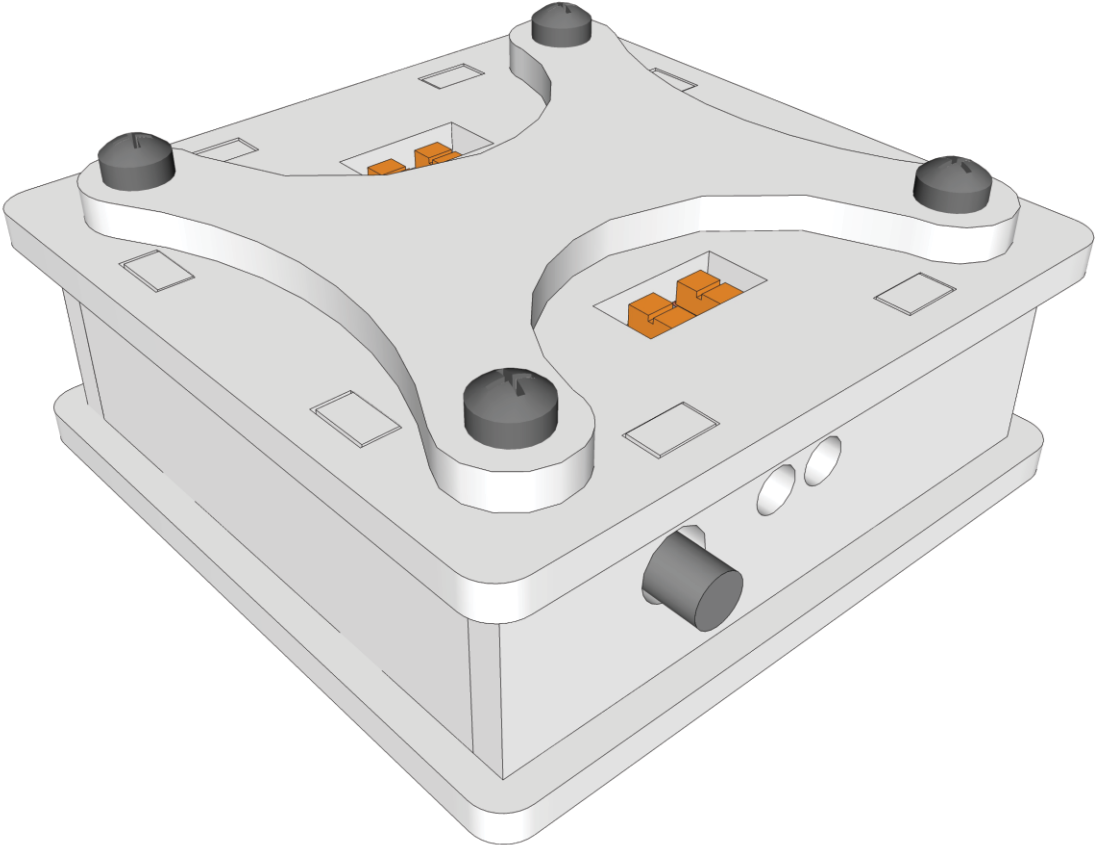
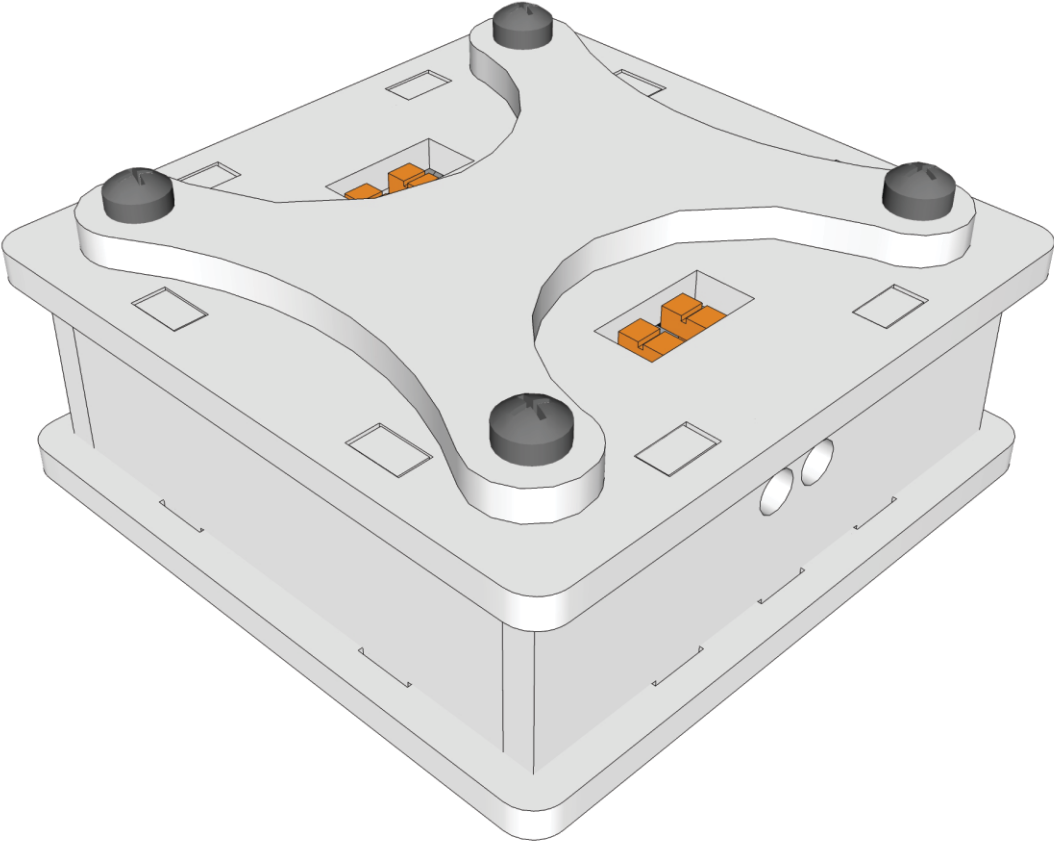
CASING ASSEMBLY 4/6

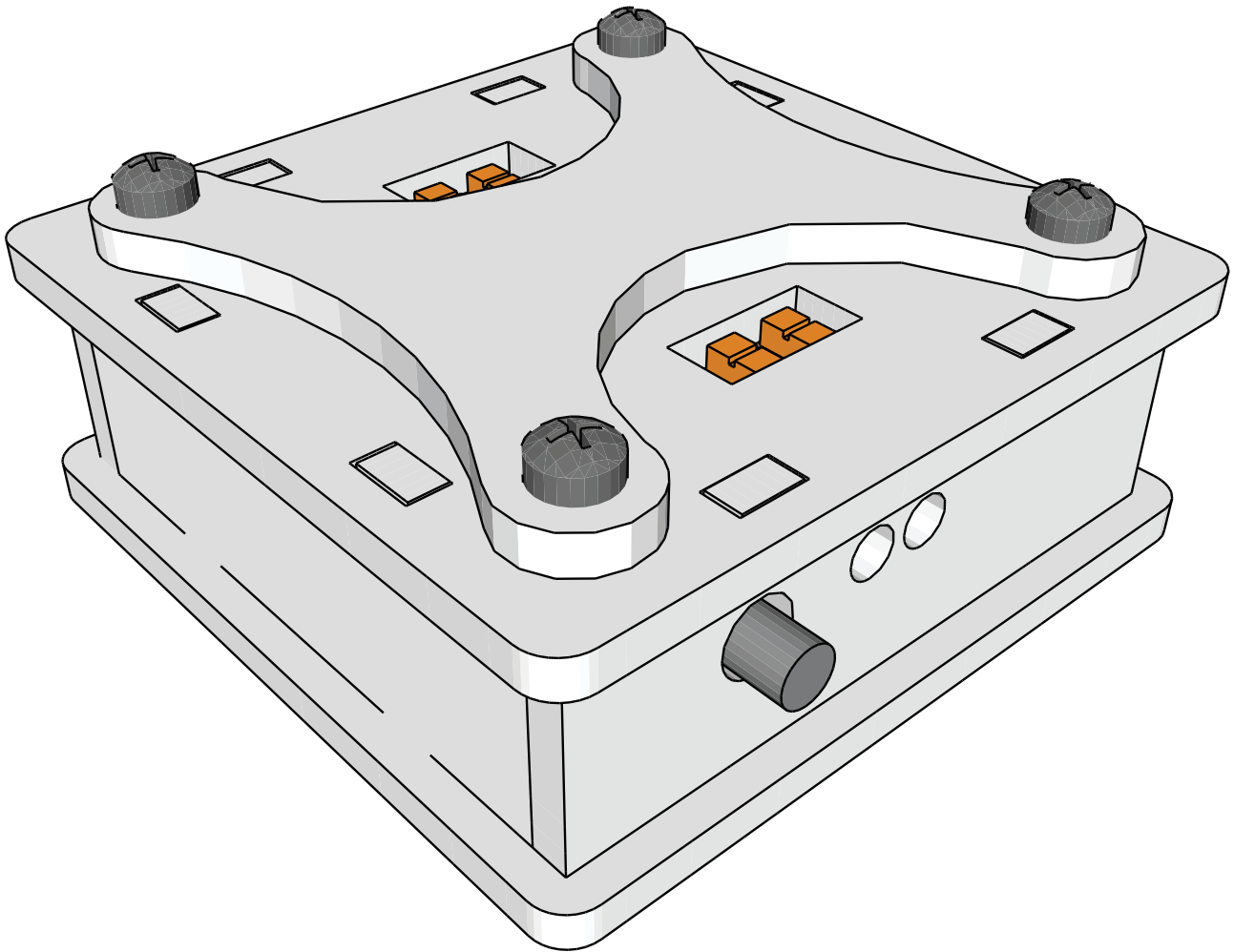


CASING ASSEMBLY 5/6

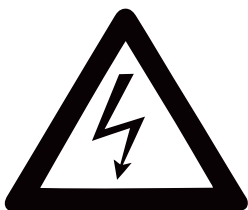


CASING ASSEMBLY 6/6





CAUTION



RISK OF ELECTRIC SHOCK

NPS NO.1



WWW.NIXIE.NINJA