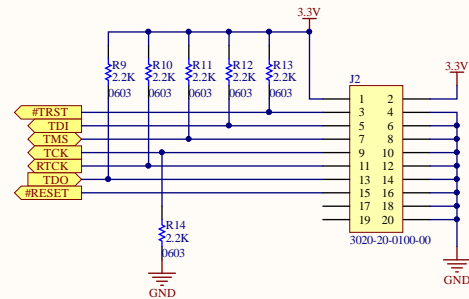
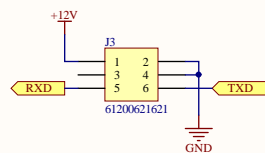


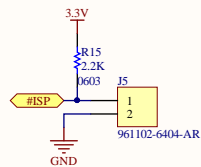
KAVIR ELECTRONIC'S 7" DISPLAY SSD1963 DRIVER BOARD



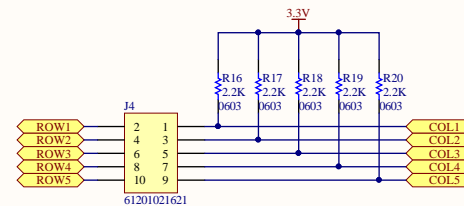
JTAG PROGRAMMING/DEBUGGING PORT



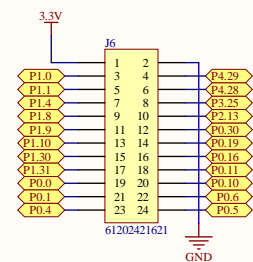
SERIAL AND POWER PORT



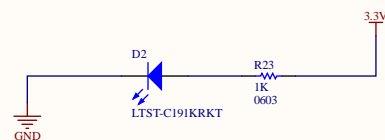
ISP PROGRAMMING MODE JUMPER



4 X 4 MATRIX KEYPAD



FREE GPIOs



POWER LED

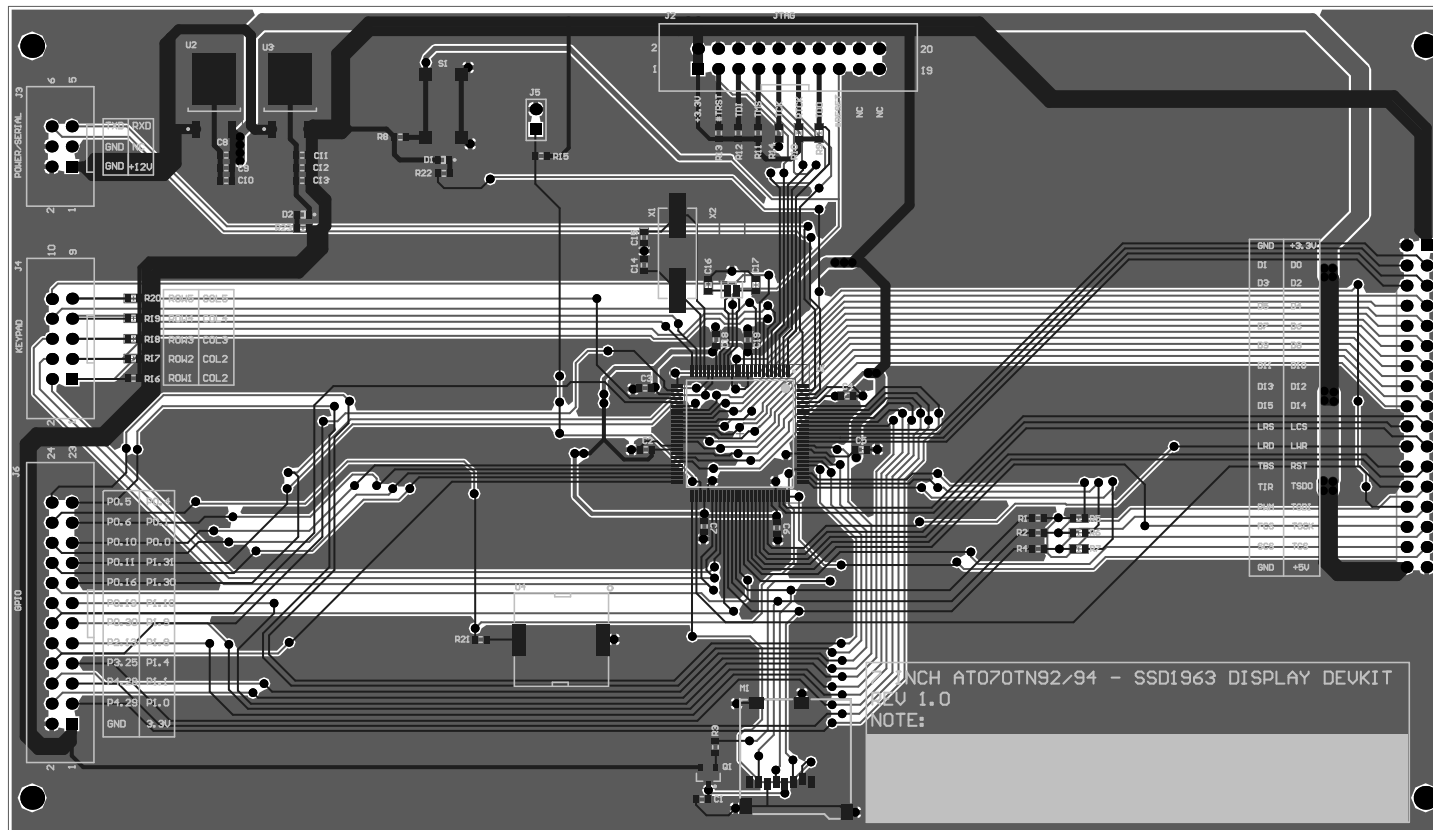
Title LPC1768 Display Interface			Senior Electron	Cannot open file
Size: A3	Number:	Revision: 1.0		C:\Users\Mas
Date: 11/3/2016	Time: 1:29:27 PM	Sheet 2 of 2		thv\Desktop
File: G:\mash\personal_data\projects\USA\7 Inch AT070TN94 Display LPC1768 Board\Schematic and PCB\LPC1768 Display interface				2010 DC

MATERIAL: FR4
BOARD TYPE: 2LAYER - 016 MM THK
BOARD SIZE: 182MM X 105MM
EXTERNAL COPPER: 1oz
SURFACE FINISH: HASL
ROHS: YES
SOLDER MASK COLOR: GREEN
LEGEND SIDES: TOP
LEGEND COLOR: WHITE
SMALLEST HOLE: 0.4MM
TRACE/SPACE: 0.010 / 0.15MM

NOTES:

1. FOUR 3MM DIAMETER HOLES ON THE CORNERS ARE NOT PLATED

MODAYER::TOP.L



Comment	Designator	Footprint	Quantity
1u	C1	J1-0603	1
100n	C2, C3, C4, C5, C6, C7, C8, C11, C18, C19	J1-0603	10
10u	C9, C10, C12, C13	J1-0603	4
30PF	C14, C15, C16, C17	J1-0603	4
LTST-C191KRKT	D1, D2	LED 0603	2
61303421121	J1	Pin Header 2 X 17 pitch 100mil	1
3020-20-0100-00	J2	IDC BOX 2 X 10 PITCH: 100MIL	1
61200621621	J3	IDC BOX 2 X 3 PITCH: 100MIL	1
61201021621	J4	IDC BOX 2 X 5 PITCH: 100MIL	1
961102-6404-AR	J5	Pin Header 2pin Pitch 100mil	1
61202421621	J6	IDC BOX 2 X 12 PITCH: 100MIL	1
693071010811	M1	Micro-SD small	1
2N2907	Q1	SOT23_L	1
NC	R1, R2, R4	J1-0603	3
2.2K	R3, R8, R9, R10, R11, R12, R13, R14, R15, R16, R17, R18, R19, R20	J1-0603	14
0	R5, R6, R7, R21	J1-0603	4
220R	R22	J1-0603	1
1K	R23	J1-0603	1
PTS645SM43SMTR 92 LFS	S1	Tactile switch 6x6mm	1
LPC1768FBD100	U1	SOT407-1_V	1
L7805CDT-TR	U2	TO-252_N	1
LF33ABDT-TR	U3	TO-252_N	1
PKLCS1212E4001- R1	U4	PIEZO SMD 12MM X 12MM	1
ABLS-12.000MHZ- B4-T	X1	ABLS Crystal	1
AB38T-32.768KHZ	X2	Capsule crystal	1