

DESCRIPTION

The RXU01 Receiver Module is a compact, one-channel, long range garage door remotes receiver. It operates on 315 or 433MHz frequency and is compatible with the vast majority of European commercialized Fixed Code and Rolling Code systems. It is foreseen that more than 90% of the commercially available garage door openers, are within the compatibility list of RXU01 Receiver, with tendency to increase due to the growth of Rolling Code implementation. More specific manufacturers systems are being implemented on RXU01 Receiver.

For full compatibility or special implementations, please contact info@lmpautomation.com

Encoding Chip	Encoding Type	Compatible
PT2262, PT2264 ⁽¹⁾	Fixed Code - 12 Tri-State	Yes
eV1527 ⁽²⁾	Learning Code – 24 bits	Yes
HT6P20	Learning Code – 28 bits	Yes
HT12E	Fixed Code – 12 bits	Yes
HT6010 ⁽³⁾	Fixed Code – 24 bits	Yes
AX5326-4	Fixed Code – 24 bits	Yes
HSC301	Rolling Code – 64Bits	Yes
HSC301 LMP ⁽⁴⁾	Rolling Code – 64Bits	Yes

Notes:

1 – SC5262/SC5272, HX2262/HX2272, PT2262/PT2272

2 – eV1527, RT1527, FP1527 or HS1527

3 – HT6010, HT6012, HT6014

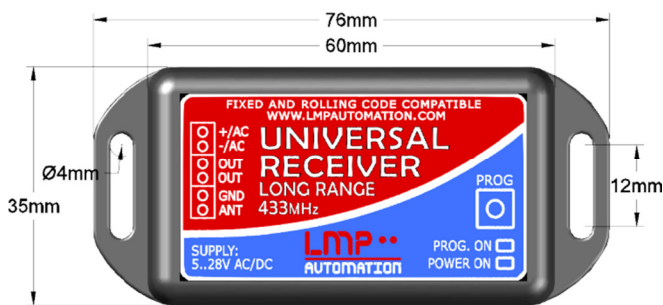
4 – LMPAutomation remotes implement the standard Rolling Code security measurements.

ADVANTAGES

The RXU01 Receiver takes part of various advantages over the competition.

- Very compact size is one of the major characteristics. It can easily be installed in existing applications, due to the reduced overall dimensions (60x35x20mm).
- It was designed and tested in order to obtain the best in class results. Due to the Superheterodyne Radio, with an expressive -108dB reception sensibility, reception range can be up to 80m with wire antenna, or 150m with rod antenna.
- Wide Voltage supply capability will ensure no restrictions in field applications.
- Low power consumption will also ensure low thermal profile, thanks to the premium grade Voltage regulator incorporated.
- Automotive grade components will ensure stable and reliable working for years.
- New Software algorithms guarantee simultaneous compatibility with Fixed and Rolling Code transmitters, maintaining security of Rolling code with LMPAutomation transmitters.

EXTERNAL DIMENSIONS



TECHNICAL SPECIFICATIONS

Receiver Model	RXU01
Power Supply Voltage	5-28VAC / 5-32 VDC
Nominal Current	12 mA
Output Channels	1
Storable Codes/Remotes	50
Reception Frequency	315 or 433MHz / -108dB
Reception Range	Up to 80/150m ⁽¹⁾
Ambient Temperature	-20 – 55°C
Protection Class	IP 21
Dimensions	60x35x20mm / 76x35x20mm
Output Type	NO or NC Relay Contact Max. 30V/1A

Notes:

1 – Reception range will be greatly influenced by external factors such as atmospheric disturbances, obstacles, transmitter battery level, proximity to other receivers, etc. For larger reception range an external antenna must be installed.

INSTALLATION



- Installation, adjustment and maintenance may only be carried out by trained personnel! Please turn power off before proceed with installation.

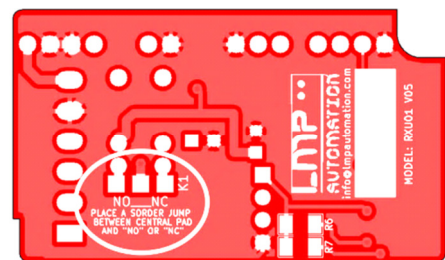
The RXU01 Receiver can be supported using the two 4mm slots on the sides. In order to connect the wires, you have to remove the two back screws.

Installation and connection of the antenna have to be carried out correctly to ensure a good range. Don't change the length of the wire antenna supplied, otherwise the reception range will be decreased. Stretch the antenna wire, place it upwards and don't let it touch metal parts. The receiver shouldn't also be installed close to metal parts or to other receivers due to radiated frequencies that can reduce reception range.

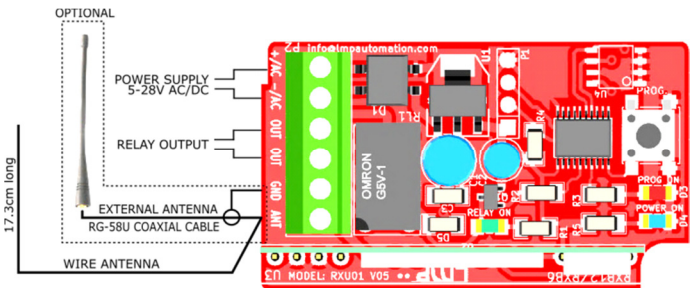
The maximum allowed wire diameter is 1mm² (17AWG). You should strip 5mm of the wire, and use insulated wire ferrules in case of stranded wires.



Note: The RXU01 Receiver is configured from factory with a NO (Normally Open) Relay Output. If NC (Normally Closed) is required, you need to open the RXU01 Receiver, remove the solder jump on the bottom of the PCB circuit with a soldering iron, and place a new solder jump between the center pad and the NC pad.



WIRING CONNECTIONS



PROGRAMMING

All compatible Encoding Technologies can coexist in the RXU01 Receiver. Depending on the type of encoders memorized, the maximum stored remotes will vary.

To store a new remote proceed as follow:

- 1) Open the RXU01 Receiver removing the 2 bottom screws.
- 2) Press the "SW1" Push-button for 2 seconds. The "PROG. ON" LED will turn ON. You will have 5 more seconds to store a new remote.
- 3) Press the Remote key you want to store. The "PROG ON" LED will blink once. For best results press the Remote at the normal working distance. If within the 5 seconds, you can program more remotes.
- 4) To store a new remote, repeat from step 2). If the code is already stored on memory, the "PROG. ON" LED will flash quickly. If the storage memory is full, the "PROG. ON" LED will flash quickly for a long time.

ERASE ALL CODES

To erase all codes from the receiver, proceed as follow:

- 1) Open the RXU01 Receiver removing the 2 bottom screws.
- 2) Press the "SW1" Push-button for 10 seconds. The "PROG. ON" LED will flash quickly during the erase procedure. Wait until it the "PROG. ON" LED turn off.

LMPAutomation declares that the following products:

- **RXU01 Receiver**

Are compliant with the applicable regulations of the following directives:
R&TTE 99/5/EC, EMC 2004/108/EC, LVD 2006/98EC

