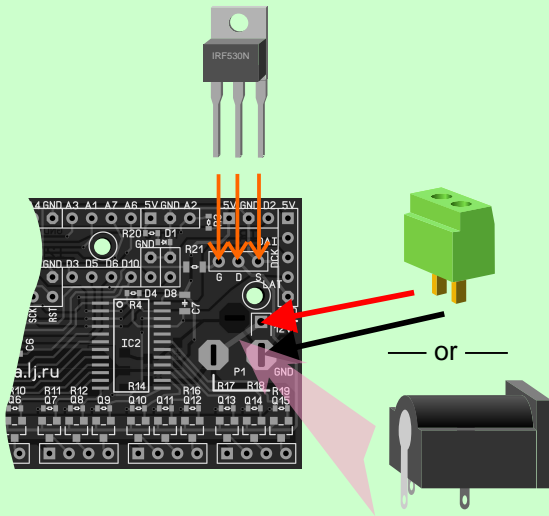
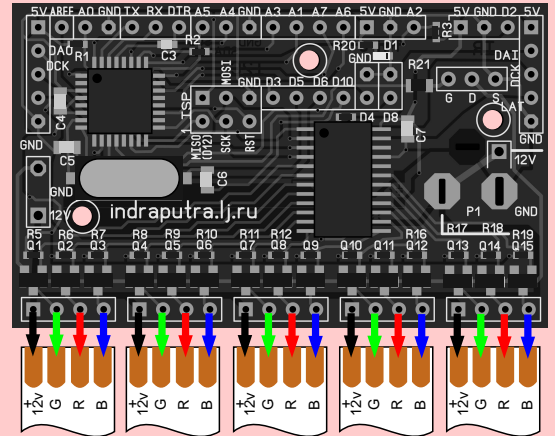


# UltiStrip

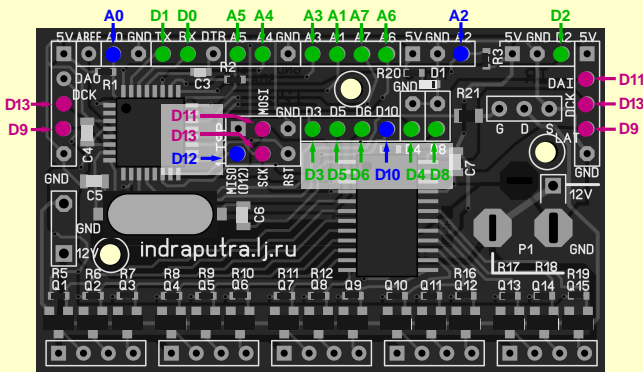
## Assembly



## RGB LED strip connection



## Arduino compatible pinout



Green: normal pin operation

A0: 10K pull-up resistor

A2: 4.7K pull-up resistor (1-wire)

D12: SPI MISO (can be used normally)

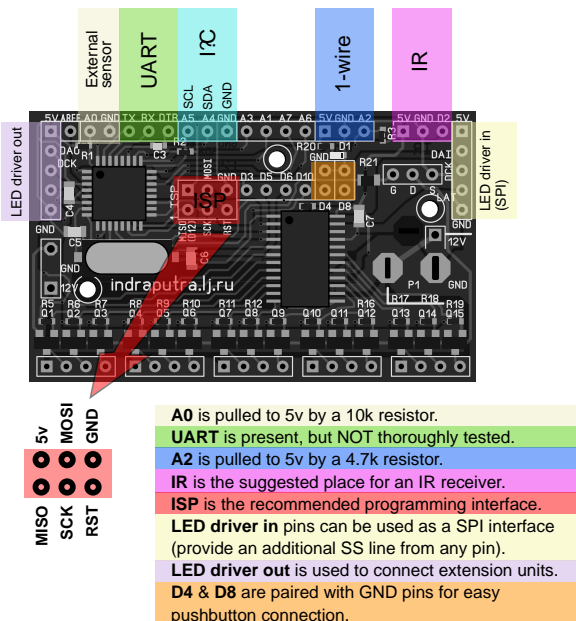
D10: OUTPUT mode only (or SPI Slave Select)

Purple: use only for SPI communication (D11/MOSI; D13/CLOCK)

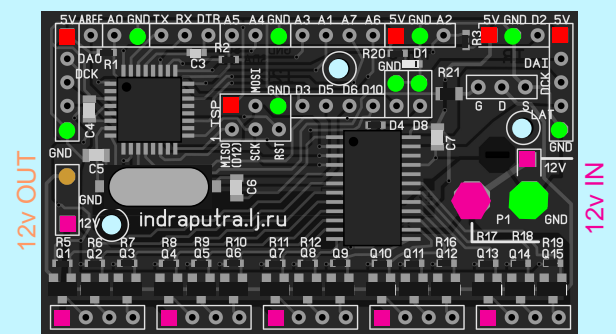
D9: do not use (LATCH signal for the LED driver)

D7 is used for MOSFET control and is unavailable

## External interfaces



## Power connectors



Red: 5v

Magenta: 9/12v

Green: common GND

Brown: master MOSFET drain (controlled GND)