

# 4CH Temperature Data Logger

compatible with Arduino **Bluetooth** Module HC-05



## **About device:**

**Measuring 98mm x 82mm x 30mm.**

**Easy connect to Android device via Bluetooth.**

**Digital temperature sensors based on DS18B20 chip.**

**USB driver based on FT232RL chip.**

**Power circuit: usb power supply .**

**Mini usb cable.**

**Software selectable: Celsius / Fahrenheit.**

**Compatible with Arduino Bluetooth Module HC-05.**

**Bluetooth distance range 10m.**

**Synchronous data transfer via bluetooth and usb cable.**

**Writing data by time and date.**

**Log interval 1s ... 7200s.**

**Output log format: text or csv (easy transfer data to Excel)**

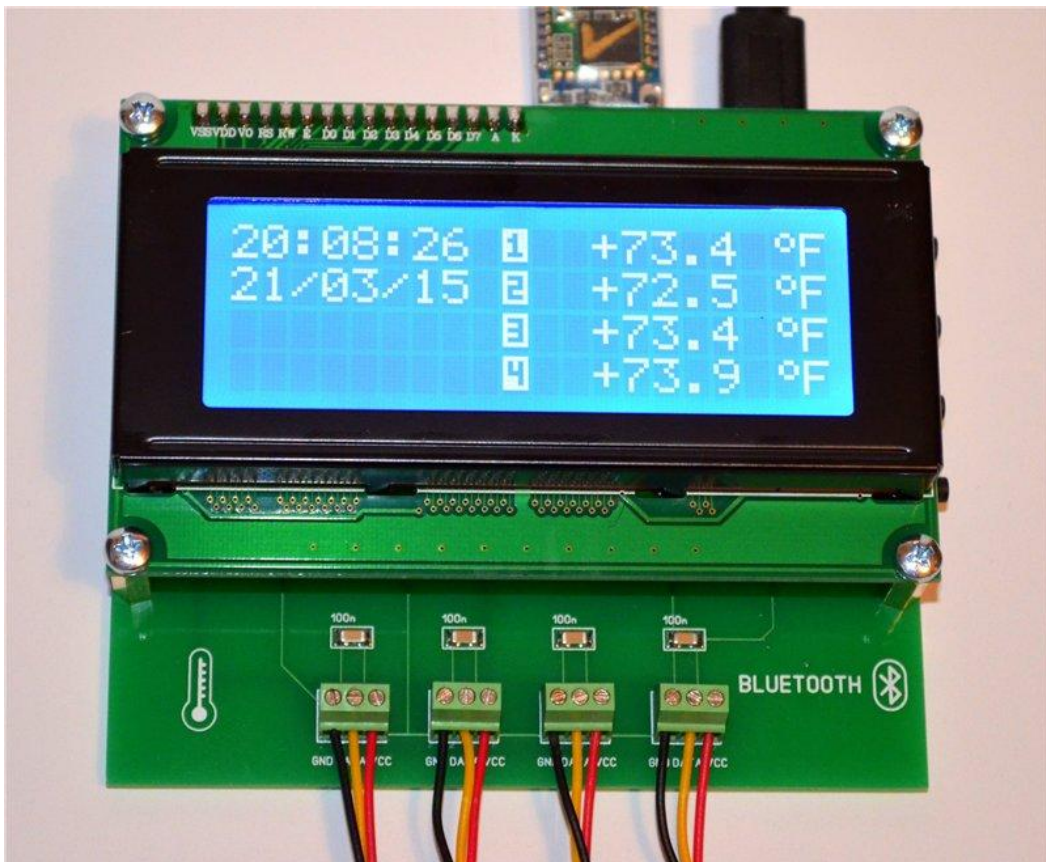
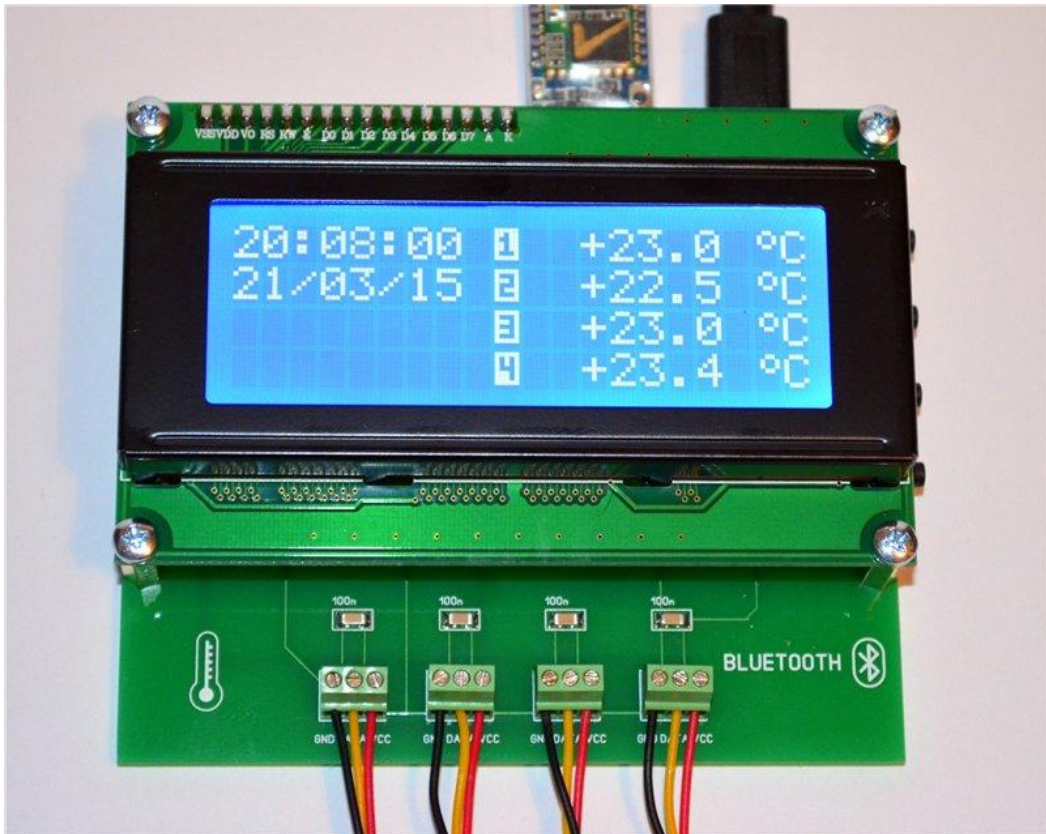
**Temperature sensor stainless steel tube size: 6x50mm.**

**UART settings: 9600kbps, 8 bits data, 1 stop bit, 1 start bit.**

**Range: -55 ~ 125°C / -67 ~ 257°F.**

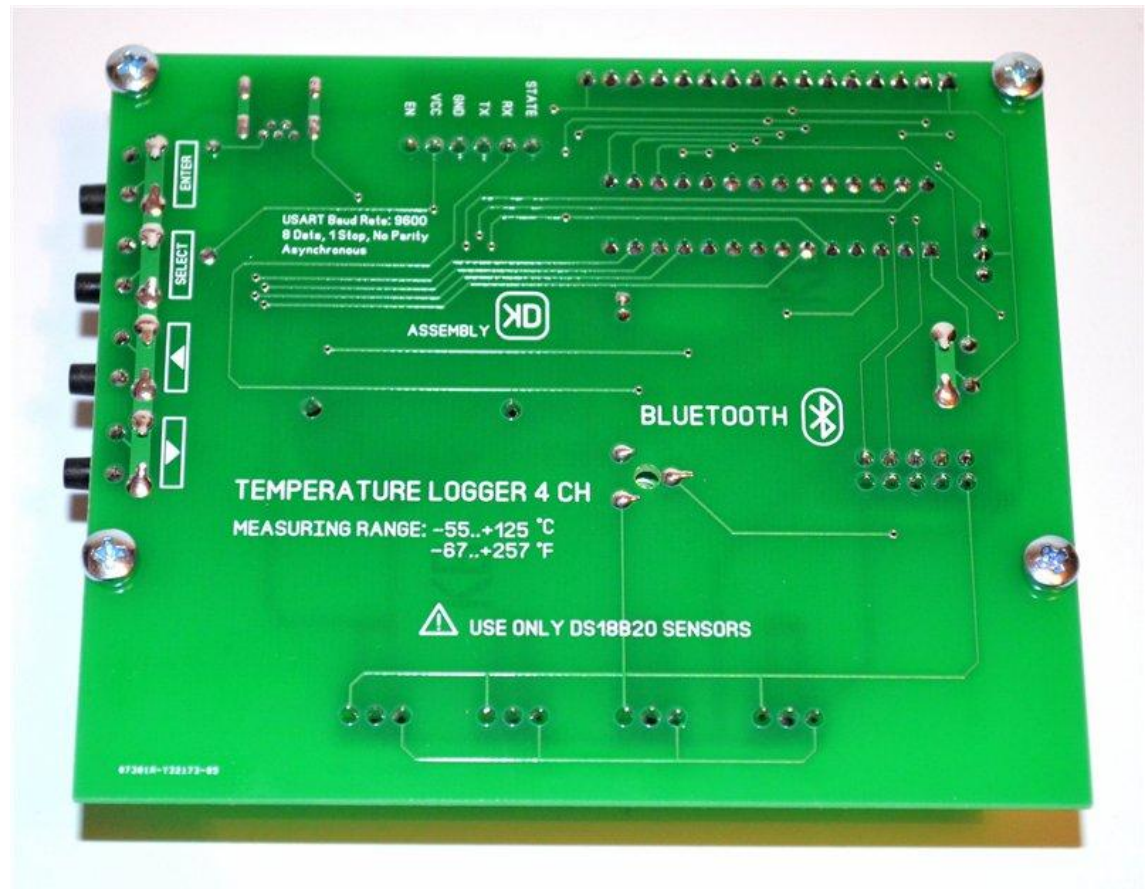
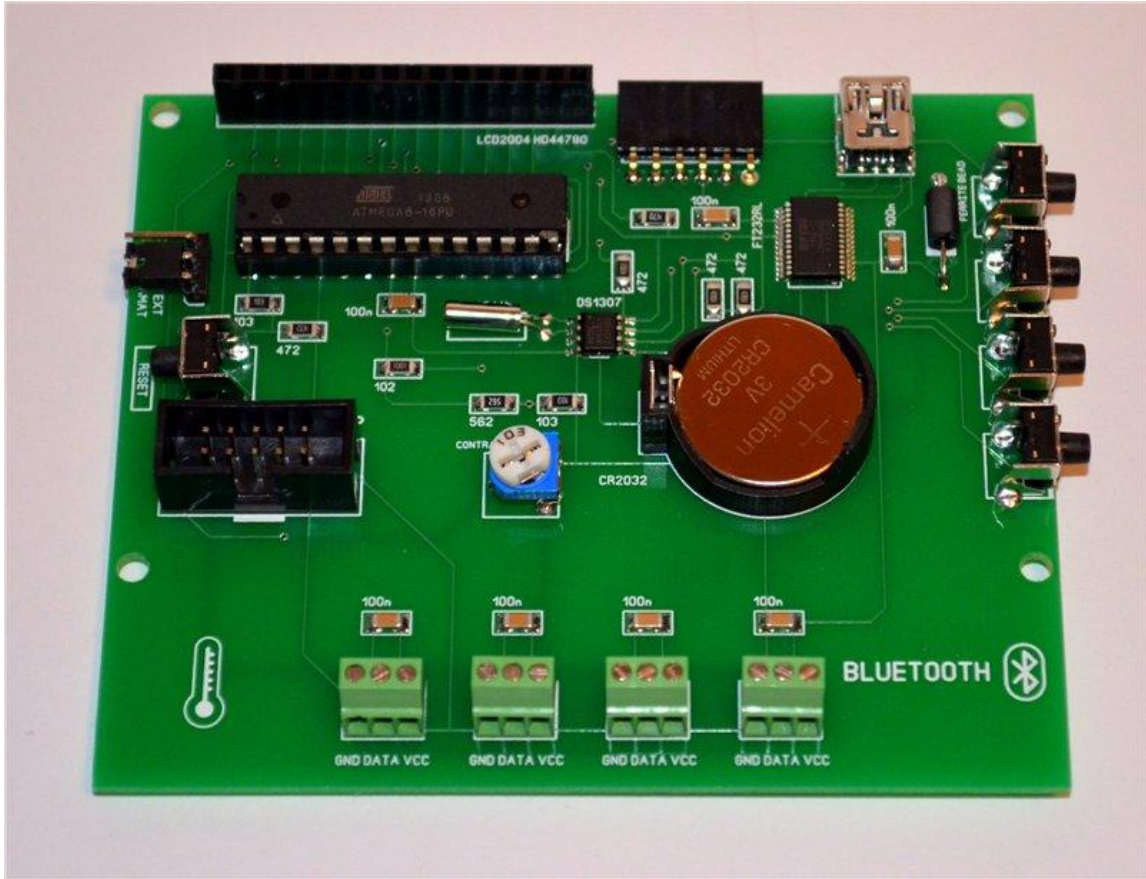
**Accuracy: ±0.5°C/ (-55 ~ 125°C / -67 ~ 257°F).**

**Resolution: 0.1°C / 0.1°F.**



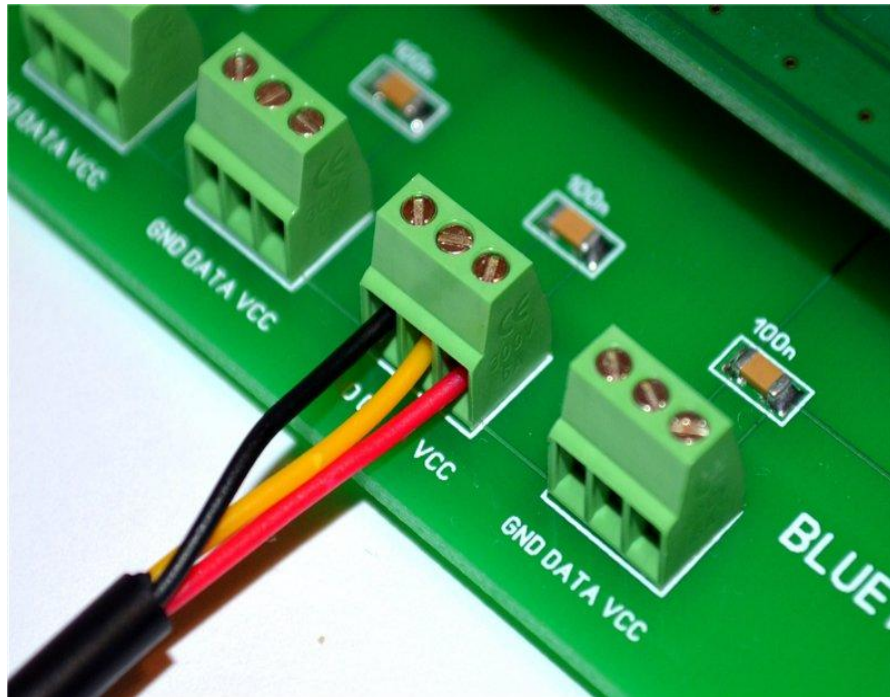
**To change C or F, press SELECT button.**

**To stop logging, press PLUS button.**

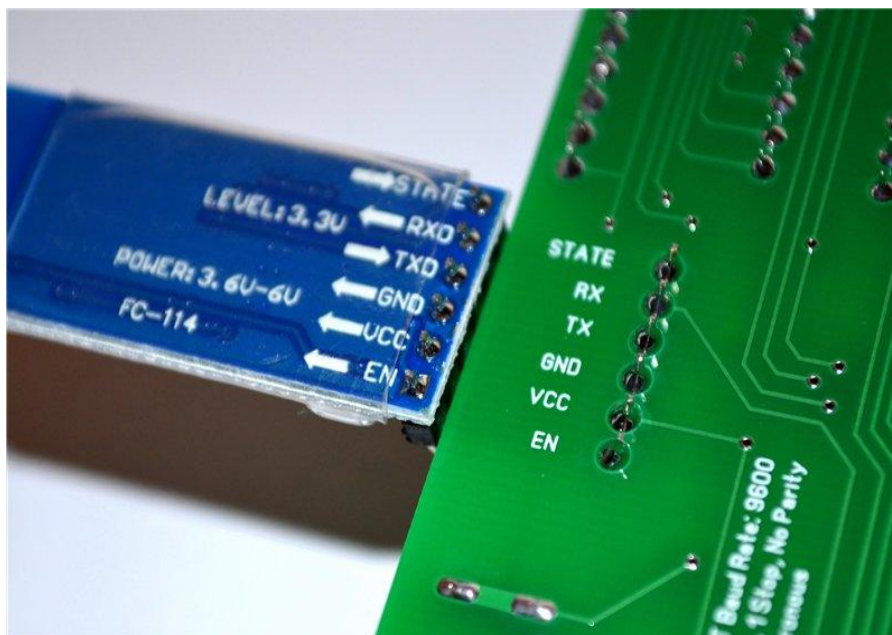


## Remember how to connect sensors:

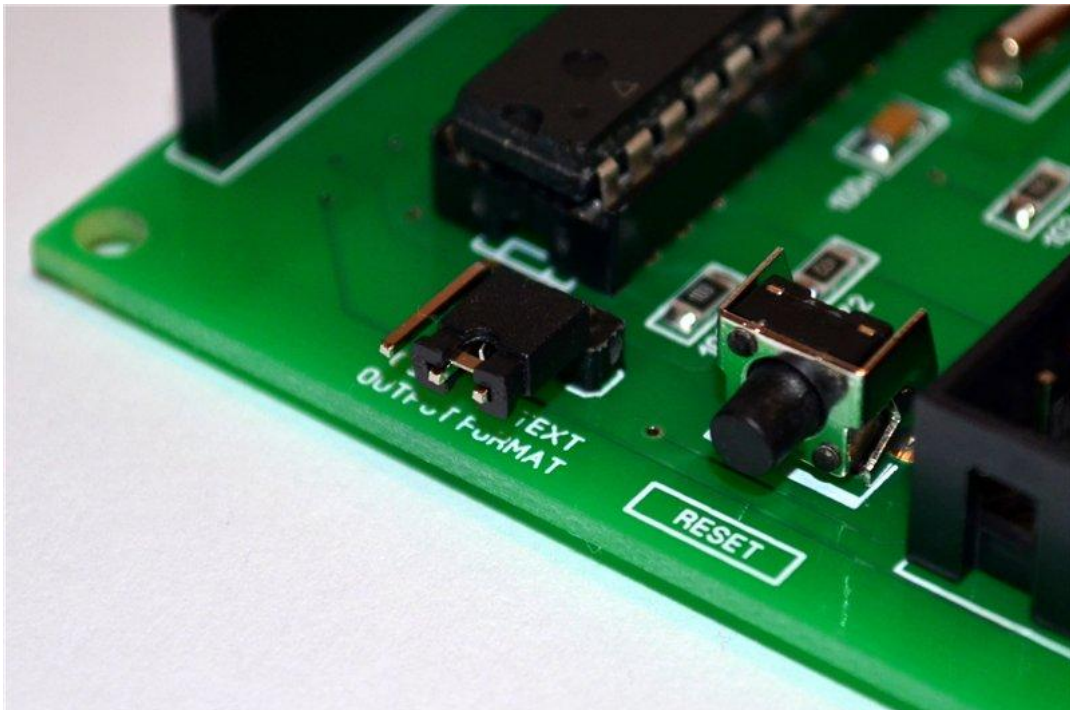
red wire – VCC; black wire – GND; yellow - DATA



## Remember how to connect **Bluetooth** Module



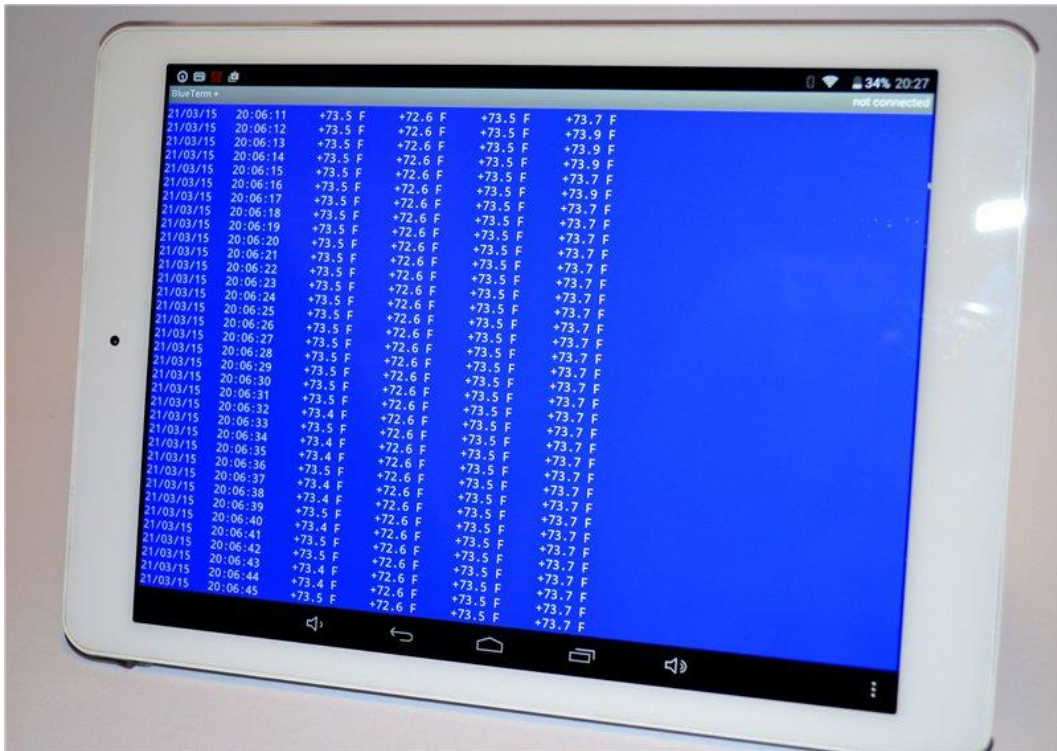
**With this switch you can change output log format: text or csv**



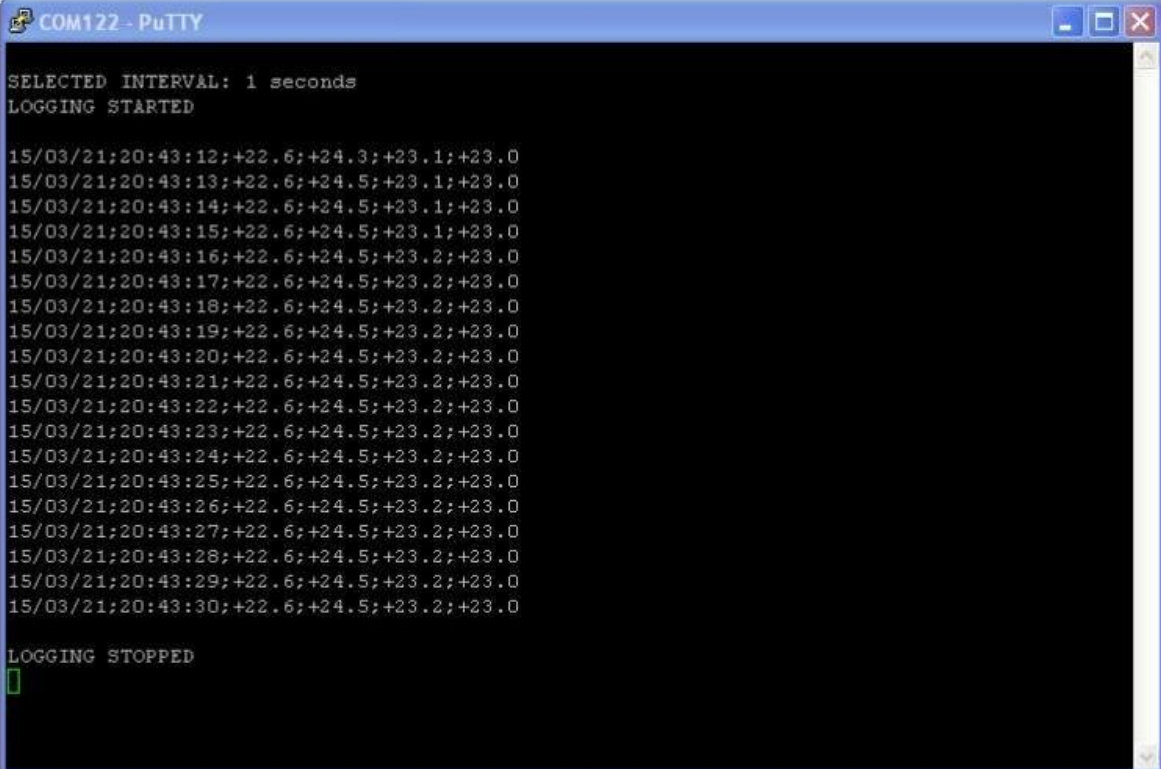
**Temperature sensors look like this**



# Temperature logger connected to Android device (Tablet PC, Onda v989)



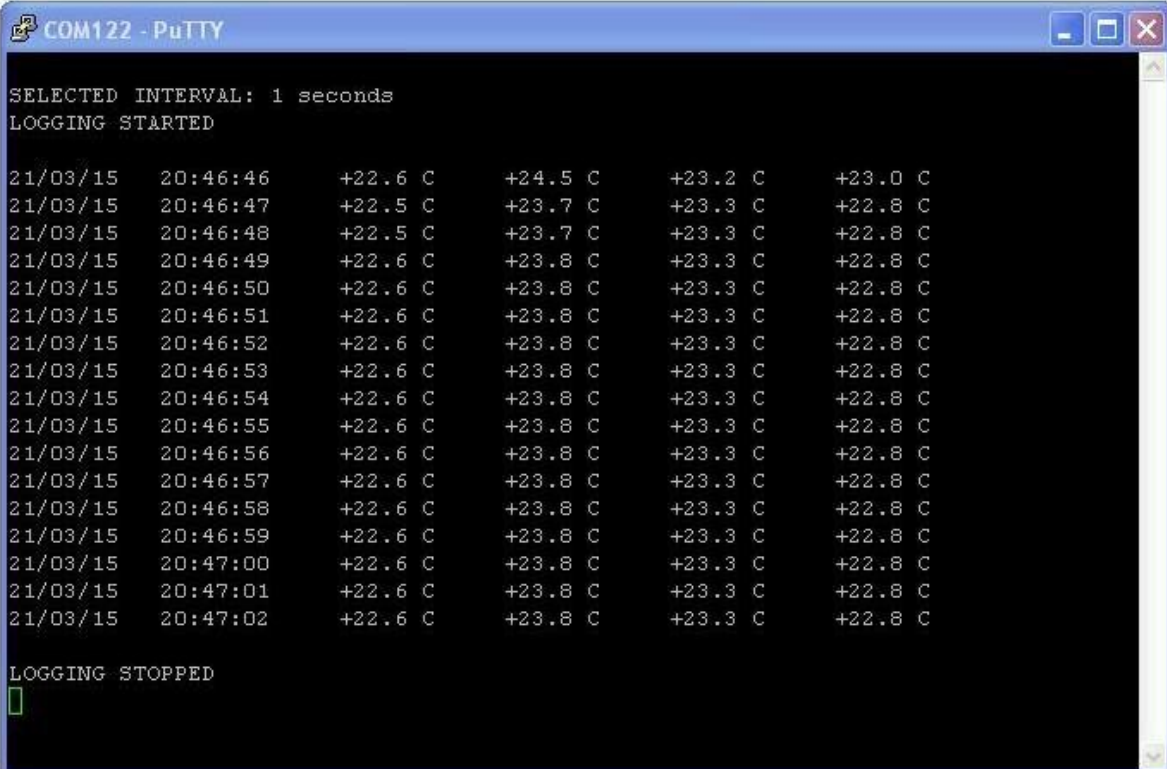
## Device connected to PC via usb cable (Putty Manager programm)



```
COM122 - PuTTY
SELECTED INTERVAL: 1 seconds
LOGGING STARTED

15/03/21:20:43:12;+22.6;+24.3;+23.1;+23.0
15/03/21:20:43:13;+22.6;+24.5;+23.1;+23.0
15/03/21:20:43:14;+22.6;+24.5;+23.1;+23.0
15/03/21:20:43:15;+22.6;+24.5;+23.1;+23.0
15/03/21:20:43:16;+22.6;+24.5;+23.2;+23.0
15/03/21:20:43:17;+22.6;+24.5;+23.2;+23.0
15/03/21:20:43:18;+22.6;+24.5;+23.2;+23.0
15/03/21:20:43:19;+22.6;+24.5;+23.2;+23.0
15/03/21:20:43:20;+22.6;+24.5;+23.2;+23.0
15/03/21:20:43:21;+22.6;+24.5;+23.2;+23.0
15/03/21:20:43:22;+22.6;+24.5;+23.2;+23.0
15/03/21:20:43:23;+22.6;+24.5;+23.2;+23.0
15/03/21:20:43:24;+22.6;+24.5;+23.2;+23.0
15/03/21:20:43:25;+22.6;+24.5;+23.2;+23.0
15/03/21:20:43:26;+22.6;+24.5;+23.2;+23.0
15/03/21:20:43:27;+22.6;+24.5;+23.2;+23.0
15/03/21:20:43:28;+22.6;+24.5;+23.2;+23.0
15/03/21:20:43:29;+22.6;+24.5;+23.2;+23.0
15/03/21:20:43:30;+22.6;+24.5;+23.2;+23.0

LOGGING STOPPED
█
```



```
COM122 - PuTTY
SELECTED INTERVAL: 1 seconds
LOGGING STARTED

21/03/15 20:46:46 +22.6 C +24.5 C +23.2 C +23.0 C
21/03/15 20:46:47 +22.5 C +23.7 C +23.3 C +22.8 C
21/03/15 20:46:48 +22.5 C +23.7 C +23.3 C +22.8 C
21/03/15 20:46:49 +22.6 C +23.8 C +23.3 C +22.8 C
21/03/15 20:46:50 +22.6 C +23.8 C +23.3 C +22.8 C
21/03/15 20:46:51 +22.6 C +23.8 C +23.3 C +22.8 C
21/03/15 20:46:52 +22.6 C +23.8 C +23.3 C +22.8 C
21/03/15 20:46:53 +22.6 C +23.8 C +23.3 C +22.8 C
21/03/15 20:46:54 +22.6 C +23.8 C +23.3 C +22.8 C
21/03/15 20:46:55 +22.6 C +23.8 C +23.3 C +22.8 C
21/03/15 20:46:56 +22.6 C +23.8 C +23.3 C +22.8 C
21/03/15 20:46:57 +22.6 C +23.8 C +23.3 C +22.8 C
21/03/15 20:46:58 +22.6 C +23.8 C +23.3 C +22.8 C
21/03/15 20:46:59 +22.6 C +23.8 C +23.3 C +22.8 C
21/03/15 20:47:00 +22.6 C +23.8 C +23.3 C +22.8 C
21/03/15 20:47:01 +22.6 C +23.8 C +23.3 C +22.8 C
21/03/15 20:47:02 +22.6 C +23.8 C +23.3 C +22.8 C

LOGGING STOPPED
█
```



**How to connect logger to Android device: <http://1drv.ms/1AXODbQ>**

**How to install driver on PC: <http://1drv.ms/1AXPbyj>**