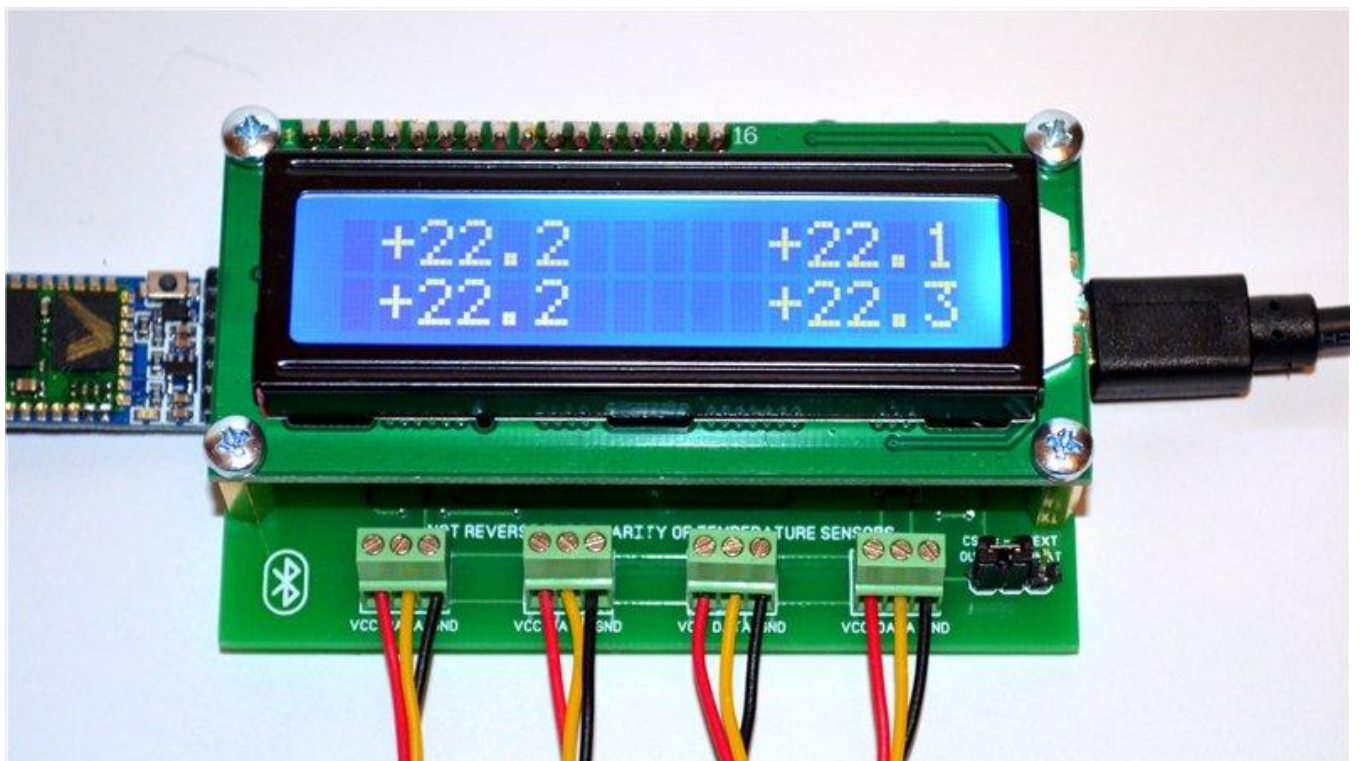


4CH Temperature Data Logger

compatible with Arduino [Bluetooth](#) Module HC-05



About device:

Measuring 80mm x 48mm x 30mm.

Easy connect to Android device via Bluetooth.

Digital temperature sensors based on DS18B20 chip.

USB driver based on FT232RL chip.

Power circuit: usb power supply .

Mini usb cable.

Software selectable: Celsius / Fahrenheit.

Compatible with Arduino Bluetooth Module HC-05.

Bluetooth distance range 10m.

Synchronous data transfer via bluetooth and usb cable.

Output log format: text or csv (easy transfer data to Excel).

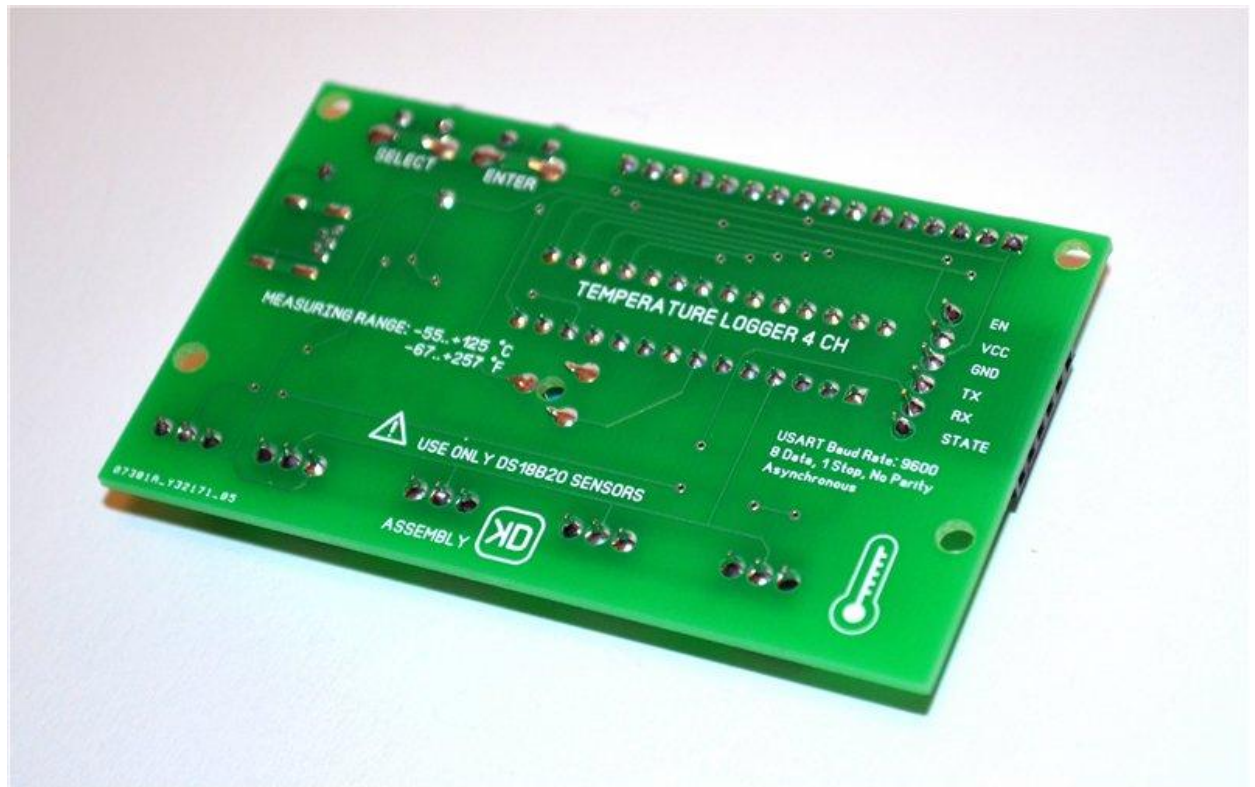
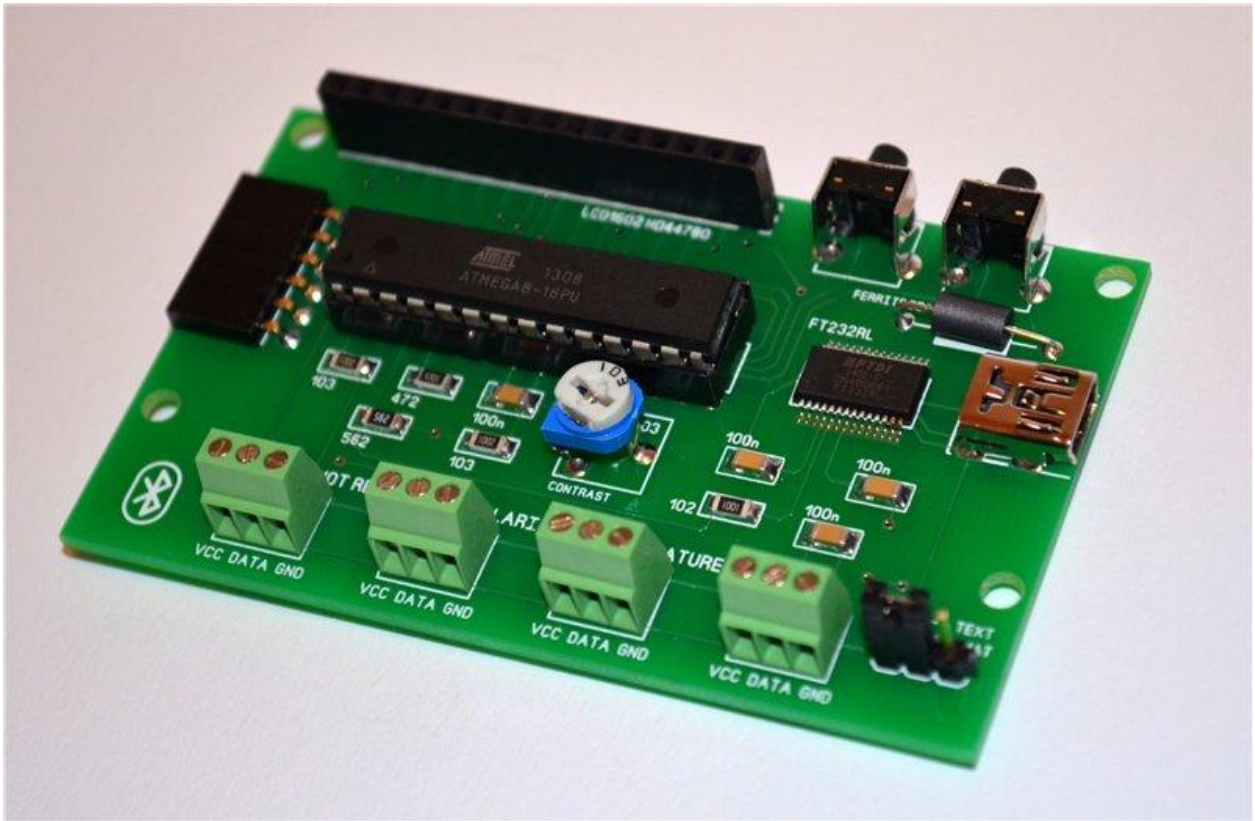
Temperature sensor stainless steel tube size: 6x50mm.

UART settings: 9600kbps, 8 bits data, 1 stop bit, 1 start bit.

Range: -55 ~ 125°C / -67 ~ 257°F.

Accuracy: ±0.5°C/ (-55 ~ 125°C / -67 ~ 257°F).

Resolution: 0.1°C / 0.1°F.



Software selectable: Celsius / Fahrenheit

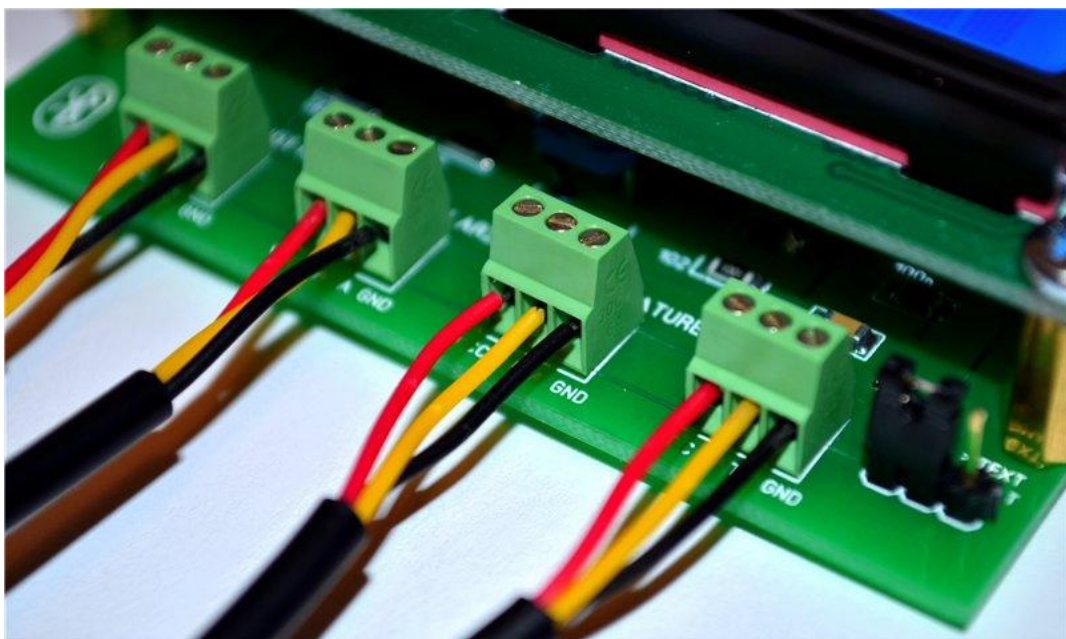


Remember how to connect sensors:

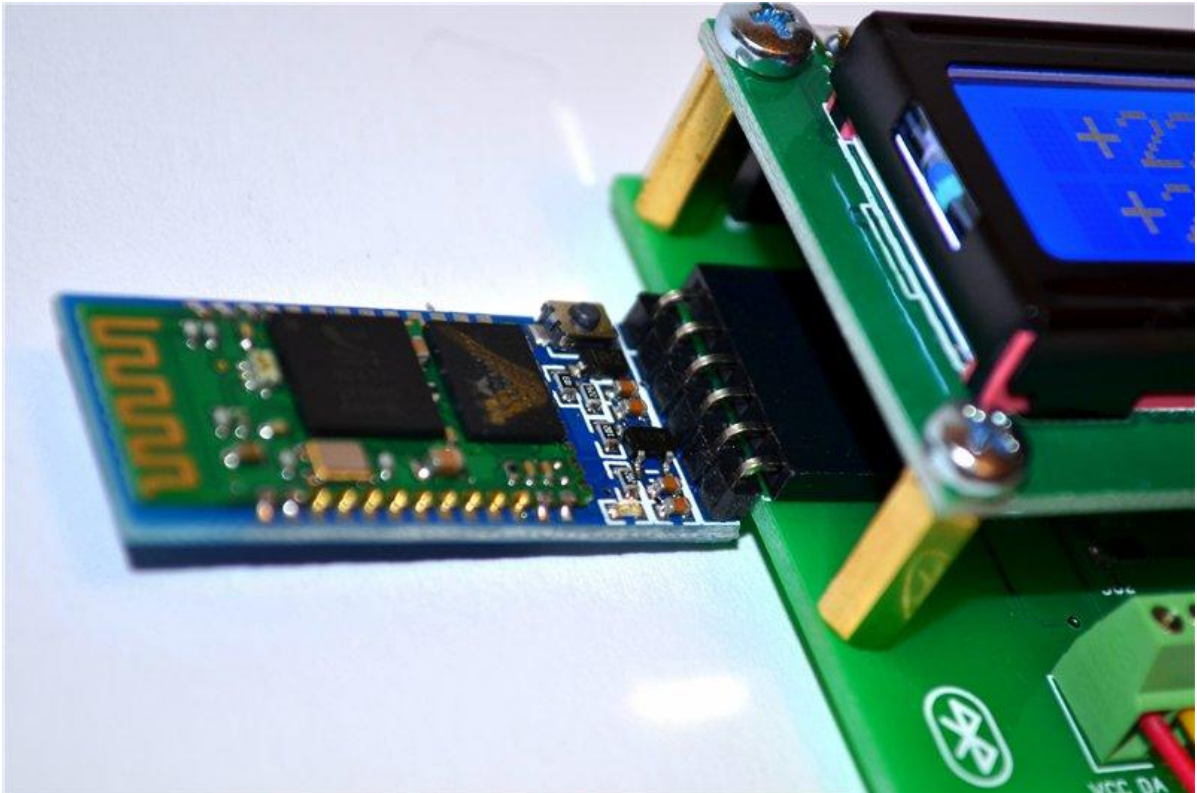
red wire - VCC

black wire - GND

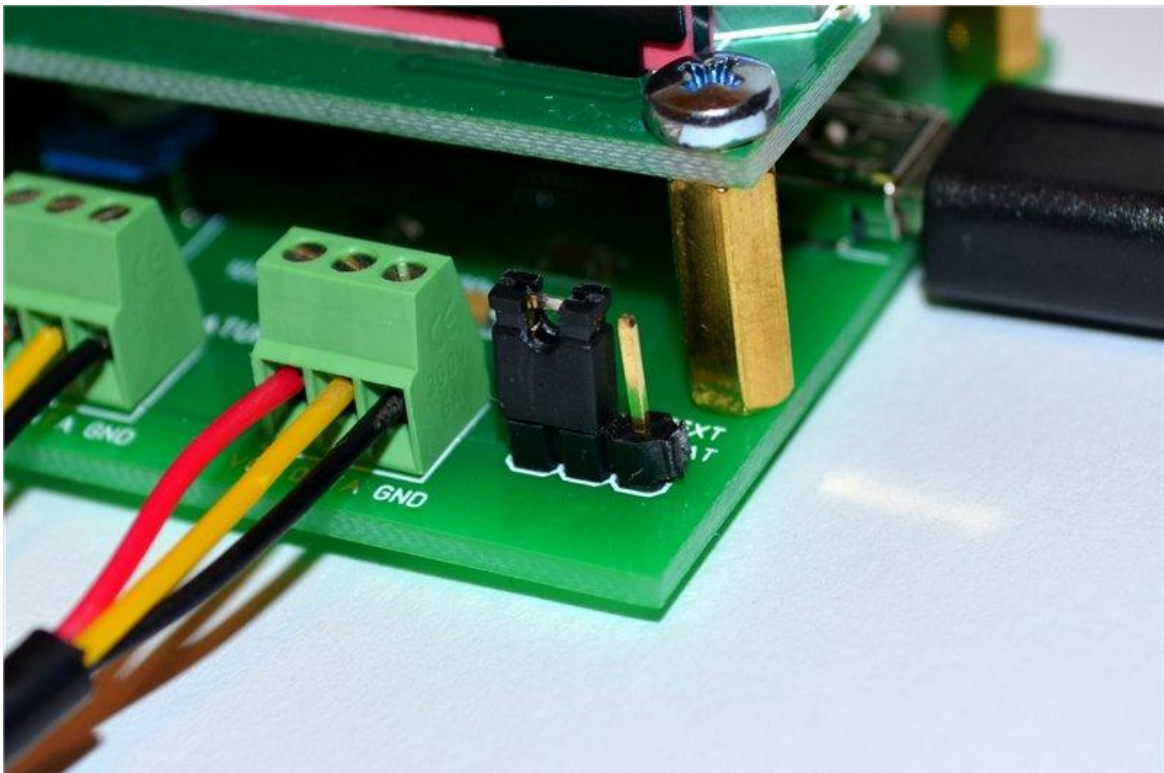
yellow - DATA



Remember how to connect [Bluetooth](#) HC-05 Module



With this switch you can change output log format: text or csv



Temperature sensors look like this



**Temperature logger connected to Android device via [Bluetooth](#)
(Tablet PC, Onda v989)**



Device connected to PC via usb cable (Putty Manager programm)

```
COM124 - PuTTY

4 CHANNEL TEMPERATURE LOGGER v2.0

TEMPERATURE RANGE: -55...+125 C
                   -67...+257 F

FOR DS18B20 SENSORS ONLY

LOGGING STARTED

+22.5 C    +22.3 C    +24.2 C    +22.3 C
+22.5 C    +22.3 C    +24.3 C    +22.3 C
+22.5 C    +22.3 C    +24.3 C    +22.4 C
+22.5 C    +22.3 C    +24.3 C    +22.4 C
+22.5 C    +22.3 C    +24.3 C    +22.4 C
+22.5 C    +22.3 C    +24.3 C    +22.4 C
+22.5 C    +22.3 C    +24.3 C    +22.4 C
+22.5 C    +22.3 C    +24.3 C    +22.4 C
+22.5 C    +22.3 C    +24.3 C    +22.4 C
+22.5 C    +22.3 C    +24.3 C    +22.4 C
+22.5 C    +22.3 C    +24.3 C    +22.4 C
+22.5 C    +22.3 C    +24.3 C    +22.4 C
+22.5 C    +22.3 C    +24.3 C    +22.4 C
+22.5 C    +22.3 C    +24.3 C    +22.4 C
+22.5 C    +22.3 C    +24.3 C    +22.4 C
+22.5 C    +22.3 C    +24.3 C    +22.5 C
+22.5 C    +22.3 C    +24.3 C    +22.5 C
+22.5 C    +22.3 C    +24.3 C    +22.5 C
+22.6 C    +22.3 C    +24.3 C    +22.5 C
+22.6 C    +22.3 C    +24.3 C    +22.5 C

LOGGING STOPPED
```

To stop logging, press SELECT button and hold it ~2sec

How to connect logger to Android device: <http://1drv.ms/1AXODbQ>

How to install driver on PC: <http://1drv.ms/1AXPbyj>