

PicoTrim Servo Controller Kit

BOM:

#	Part	Qty
1	PCB	1
2	9V Battery Snap	1
3	5V Regulator	1
4	105 Monolythic Capacitors	2
5	Pre-Programmed Microchip PIC12F508	1
6	Red Rectangular LED	2
7	Red 10-LED Bar Graph	1
8	3-pin header	2
9	Programming socket	1
10	8-pin IC Socket	1
11	20-pin IC Socket	1
12	180 Ohm Resistors (Brown, Grey, Brown, Gold)	4
13	4k7 Ohm Resistors (Yellow, Purple, Red, Gold)	1
14	10k Ohm Resistors (Brown, Black, Orange, Gold)	1
15	1R0 Ohm Resistors (Brown, Black, Silver, Gold)	1
**	Optional Extra Mosorb 33V 1500W HVP	1
**	Optional Extra Mosorb 6.8V 600W HVP	1

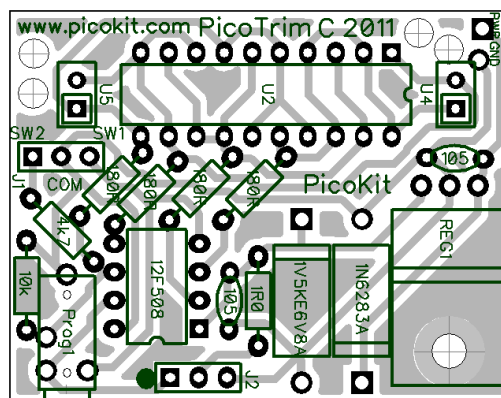
PIC Function:

4 Outputs – Tristate Multiplexed – drive the 12 LEDs

2 Inputs – two switches with Weak Pull-up. (1 Input is paralleled with an LED output) Tested every 20ms

1 Output – Servo Driver (Manual PWM to achieve 1.5 to 2.5ms pulse with 20ms period)

PCB Overlay:



PIC Re-Programming:

- Flowchart with PicoFlow Alpha
- Requires PicoFlow USB Programmer

www.picokit.com