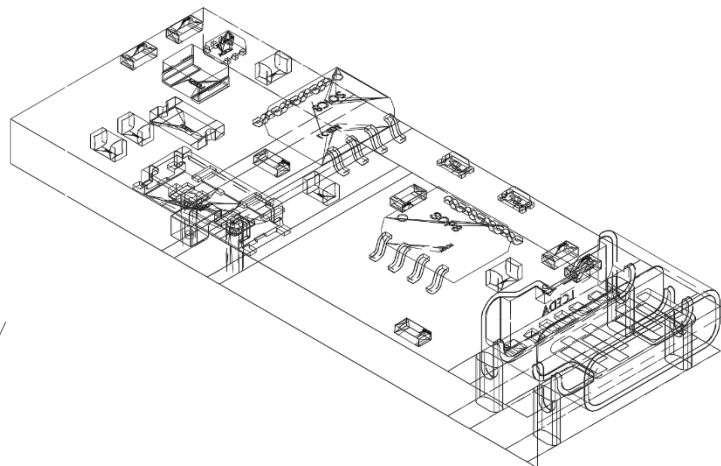


EcoCell LithiumSafe

Features

- 5V Output Voltage
- 1A max Current
- USB-C charging
- Lithium Ion/ Polymer chemistry
- Built-in protection circuitry



Description

The EcoCell LithiumSafe PCB is an all in one, environmentally-friendly power solution designed for low to medium power electronic products. The circuit contains safety measures including over and undervoltage, overcurrent, short circuit and thermal protections for the CC-CV charging requirements of lithium batteries.

Typical Applications

Small sensors – IOT – Remote controls – Arduino – Low power communications
 – ESP32 – Microcontrollers – Low Power Electronic s

Pin Description

| Pin | Name | Description |
|-----|------------|-----------------------------|
| 1 | Vout | |
| 2 | GND | GND output pin, (JST Black) |
| 3 | Battery IN | Battery + |
| 4 | Battery IN | Battery - |

Electrical Characteristics

| Parameter | Specification |
|---------------------|--|
| Battery type | Lithium Polymer, Lithium Ion |
| Nominal Voltage | 3.7V |
| Output Voltage | 4.2V – 3.0V |
| Output Current Max | 1A |
| Capacity | <500mAh |
| Charging Port | USB-C |
| Charging Voltage | 5V |
| Charging Current | -- |
| Protection Features | Undervoltage, Overvoltage, Thermal, Overcurrent, Short Circuit |

Environmental Characteristics

| Parameter | Specification | |
|------------------------------------|---------------|----|
| Operating Temperature / C | -20 | 60 |
| Charging Temperature / C | 0 | 45 |
| Long Term Storage Temperature /C | -20 | 25 |
| Short Term Storage Temperature / C | -20 | 45 |