

EASYswitch ES240 – 110

CONFIGURATION INSTRUCTIONS

1/ The ES240-110 is shipped configured as per the box label but, may be re-configured as follows **before connection of mains power**.

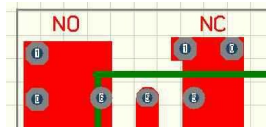
HOWEVER STEP 3 MUST ALWAYS BE DONE

2/ With power disconnected remove the lid by unfastening the 4 corner screws.



NC operation

Fit both links as shown at left

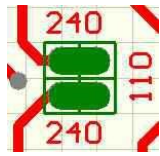


NO operation

Fit both links as shown at right



Fit output Brown lead to selected output terminal above



240 volt operation

Fit **both** links as shown at left

110 volt operation

Fit **one only** link as shown at right



3/ Strike out on the label the voltage description **NOT SELECTED**.

4/ **Securely refit lid before connection of mains power**

INSTALLATION INSTRUCTIONS

1/ Connect the C14 male socket to a source of mains A.C. Power, as configured above, and switch on.

2a/ For NO operation the LED must be GREEN (input on) and the load de-energised.

2b/ For NC operation the LED must be RED (active out) and the load energised.

3/ If the configured condition is not present, switch off, disconnect and return to supplier.

4/ Apply a shorting link directly to the control contacts terminals of the EASYswitch

5a/ For NO operation the LED must be RED (active out) and the load energised.

5b/ For NC operation the LED must be GREEN (input on) and the load de-energised.

6/ If the configured condition is not present, switch off, disconnect and return to supplier.

7/ Connect the C13 female plug to the controlled load

8/ Attach bell wire, signal wire or similar to the control contacts screw terminals.

9/ Run the control wire to the remote switching location and connect to volts free switch mechanism.

10/ If using an open collector transistor switch, connect the collector to the terminal marked O.C. and the common rail to the terminal marked OV.

11/ If using 5, 12 or 24 volt triggering connect the + signal to the terminal marked O.C. and the common rail to the terminal marked OV

12/ Verify correct operation with remote switching.



SPECIFICATIONS

Weight: 310 grams (11oz) boxed

Size: 146mm (5.75in) x 67mm (2.63in) x 45mm (1.77in).

LED Indicator: Green = Mains input on, Red = Mains active out.

Electrical life: 1 x 10⁵ operations @ 240V, 16A, resistive load.

derate accordingly for inductive and capacitive loads

Contact capacity: Inrush peak currents up to 80A max 20ms.

Control line requirements: 24VDC open circuit and 3mA



www.booleanengineering.com



OTHER MODELS

ES240-RCBO, one circuit switch board, 10 amp breaker and RCD safety switch.

ES240-110-PFD, EASYswitch with power fail detect output.

ES240-110-SK, EASYswitch with security key protected operation.