

**CUSTOM
CIRCUIT CO.**

Prusa MK2/2.5/S 4010 Fan Speed Regulator

Kevin Pettersson

Jan 2023

1 Introduction

Thank you for purchasing this upgrade board. In this short guide I will go through the main steps of how to install the board, so lets begin!

2 Disclaimer

The following information is provided "as is" and without warranty of any kind, express or implied. I, will not be liable for any damages of any kind arising from the installation or use of this upgrade product for your Prusa printer, including, but not limited to, direct, indirect, incidental, punitive, and consequential damages. The user assumes all responsibility and risk for the installation and use of this upgrade product.

3 Prerequisites

No soldering is required for this installation; it's a simple plug-and-play process :) Before you start, ensure you have the fan upgrade board in hand.

4 Installation

Note: Ensure the device is powered off during installation to prevent any potential damage.

1. Start by unscrewing the lid of the Rambo board to reveal the internals (Figure 1).
2. Unplug the fan from its connector, marked within the white oval in Figure 1.
3. Connect the fan upgrade board to the Rambo's side, ensuring that the wire colors match the labels on the board (black to black, red to red, yellow to yellow) as shown in Figure 2.
4. Connect the fan to the upgrade board, again aligning the text on the board with the correct cable, as illustrated in Figure 3.
5. Once connected, tuck the board away in the available space within the case (Figure 4). Be cautious not to pierce the shrink tube covering the board as it could lead to short circuits!

4.1 Adjusting Fan Speed

To adjust the fan speed, use a small screwdriver to rotate the potentiometer located as illustrated in Figure 5. Rotating it clockwise increases the speed, while counter-clockwise rotation decreases it. Avoid reducing the speed too much, as it may lead to clogging. Gradually adjust the speed until you reach a desirable noise level. You are now done with the installation, enjoy the silence!

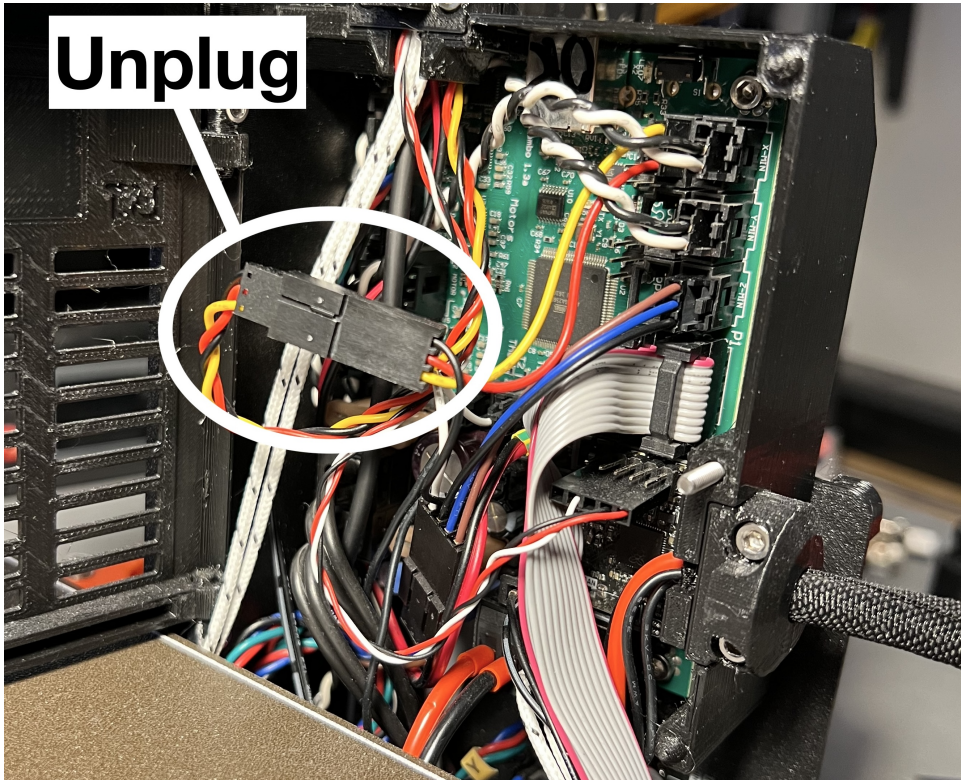


Figure 1: Fan connectors highlighted in white.

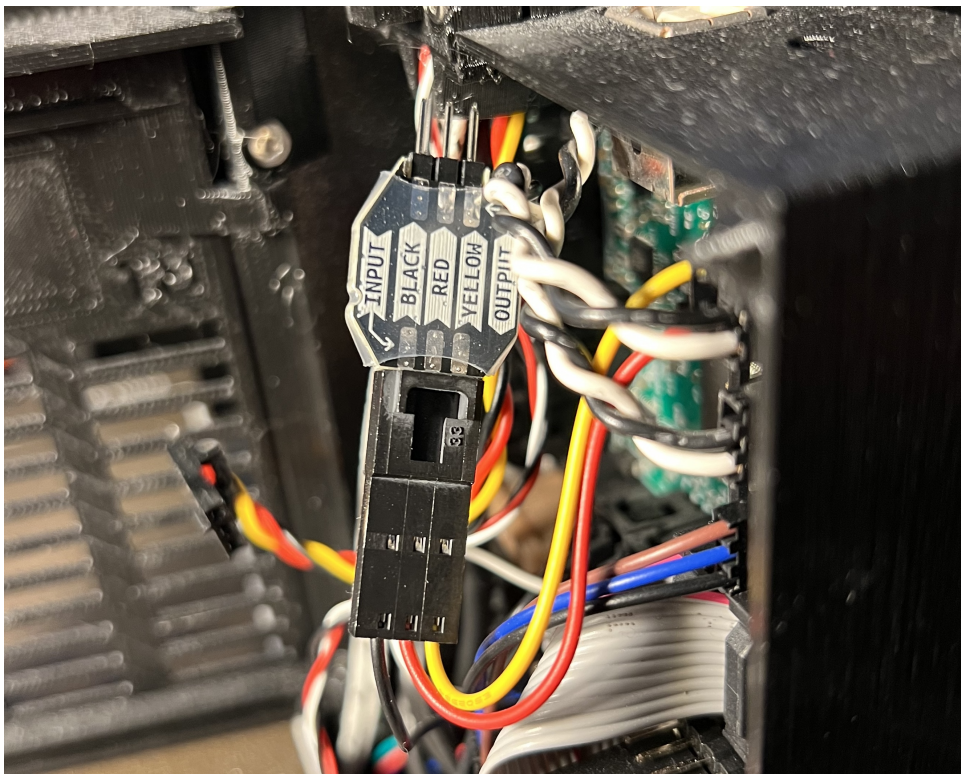


Figure 2: Correct connection of upgrade board to the Rambo's side of the fan.

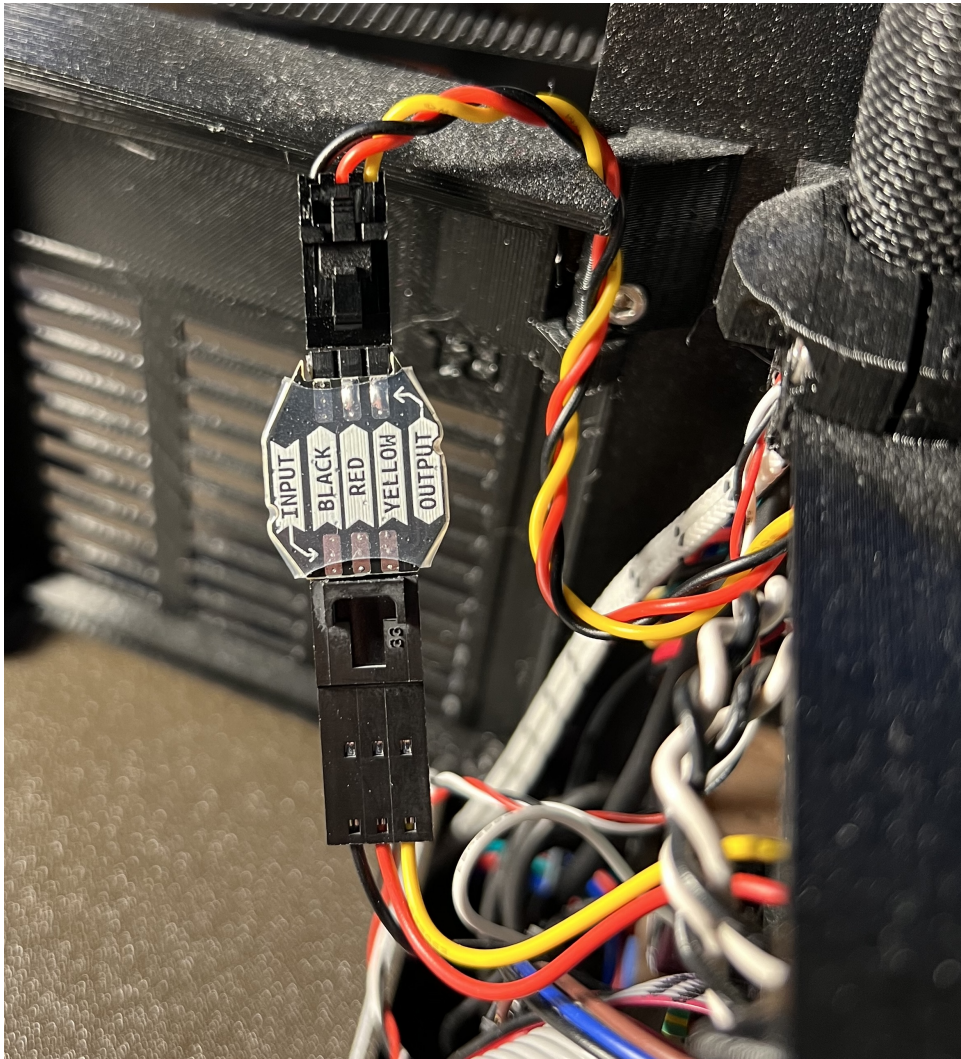


Figure 3: Correct connection of the upgrade board to the fan and the Rambo board.

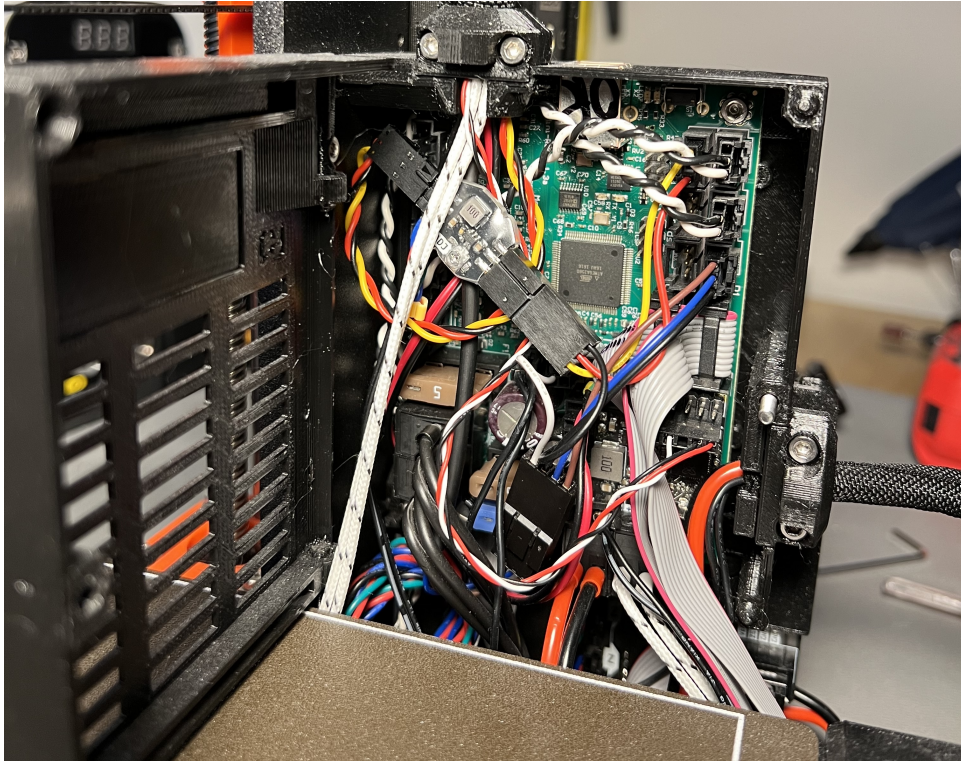


Figure 4: Finished installation with upgrade board tucked away.

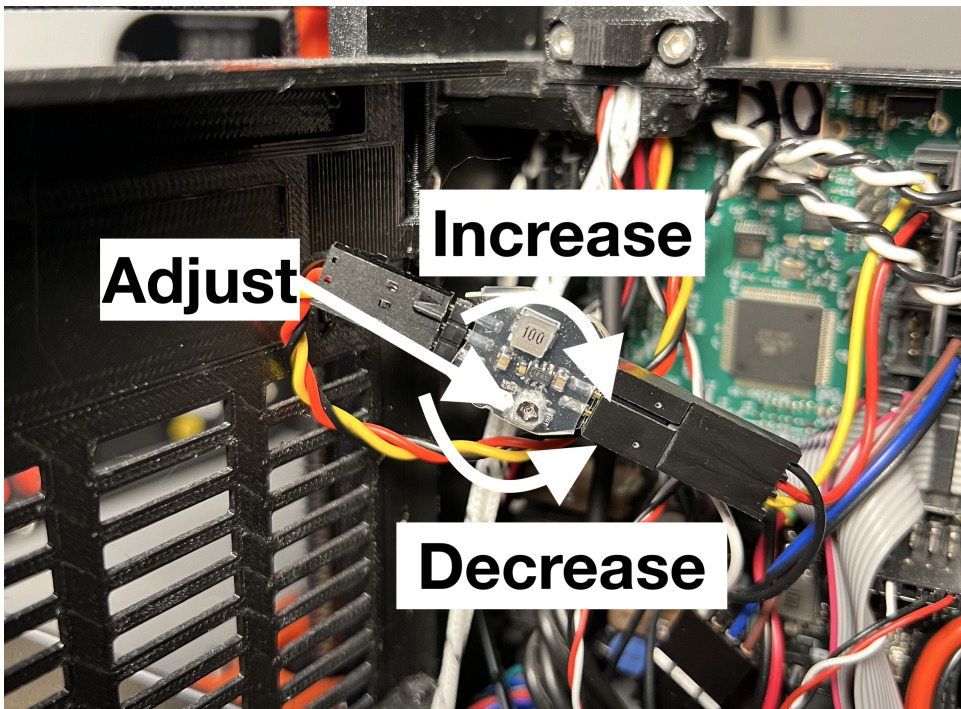


Figure 5: Illustration highlighting the location of the potentiometer for adjusting fan speed. Arrows indicate the directions to increase and decrease fan speed.