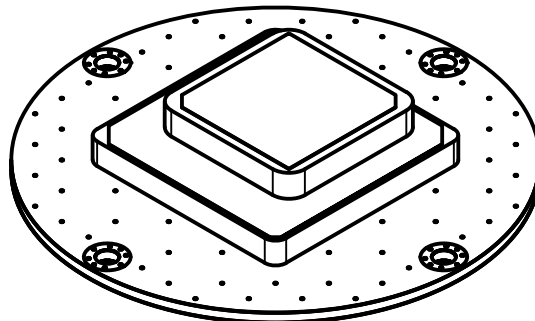


PASSIVE PRECISION L1 L5 GNSS ANTENNA

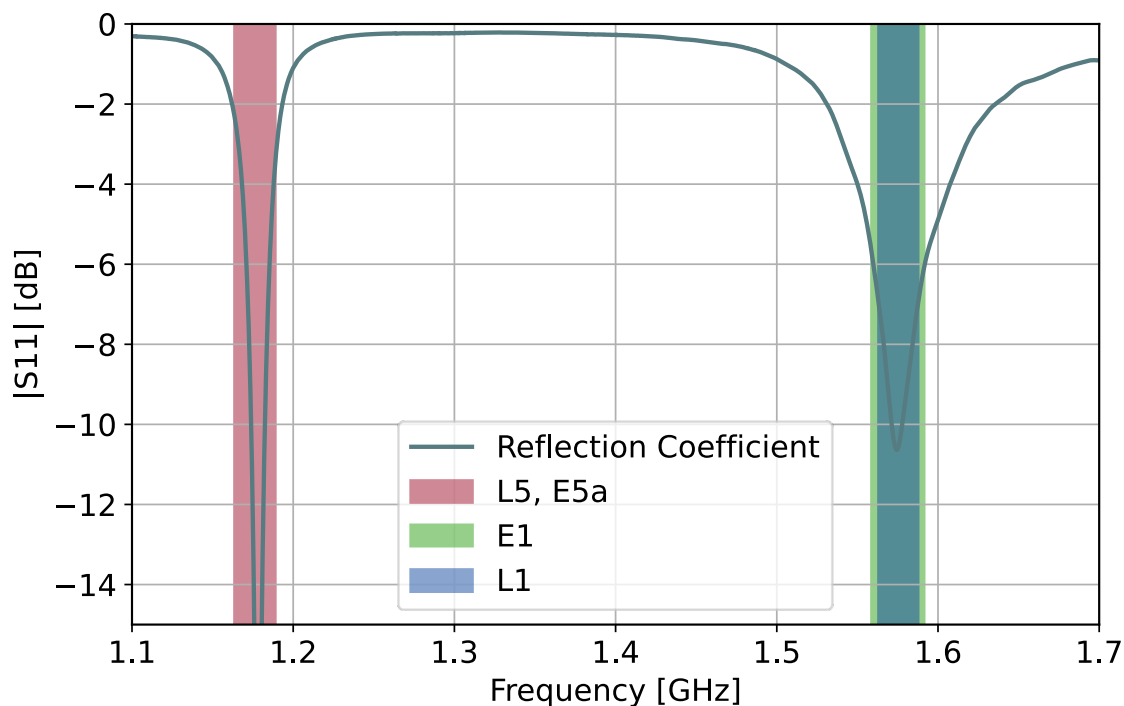
Features

- Passive GNSS-antenna
- Single feed connector
- Covering classical L1 GNSS band, in addition to L5 precision band for future high accuracy positioning systems
- Medium size ground plane for multipath reduction
- M3 size fixing points for ease of integration
- Gold plated SMA connector



Applications

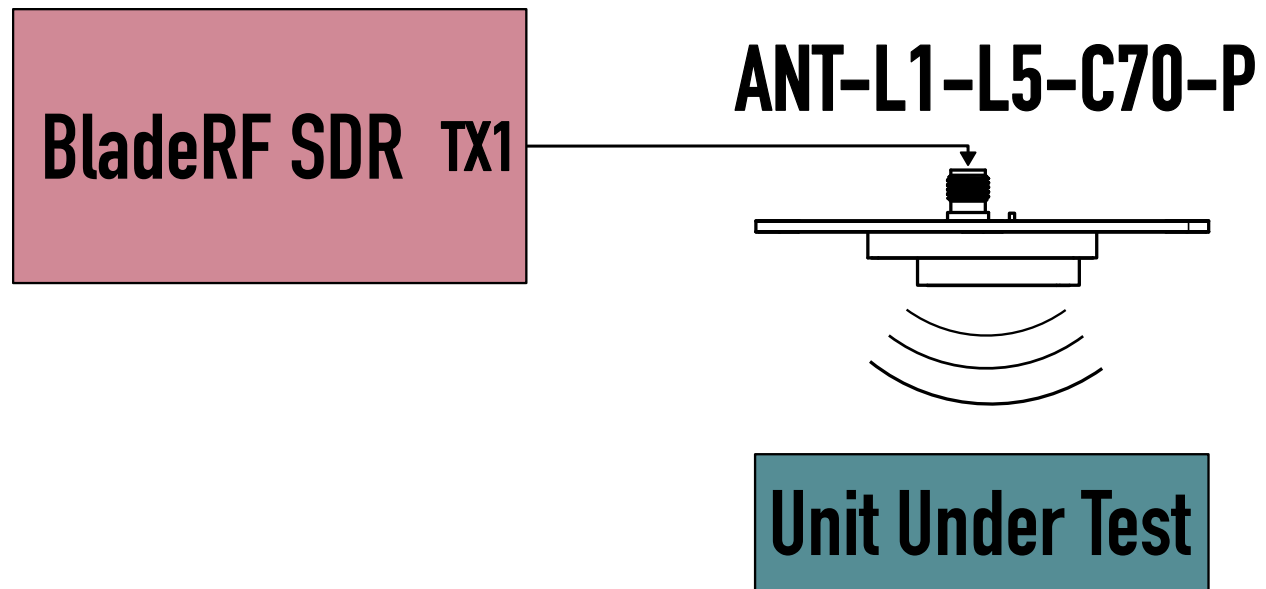
- Test & measurement
- Autonomous systems
- GPS emulation for production and lab use
- Hardware in the loop test systems (HIL)

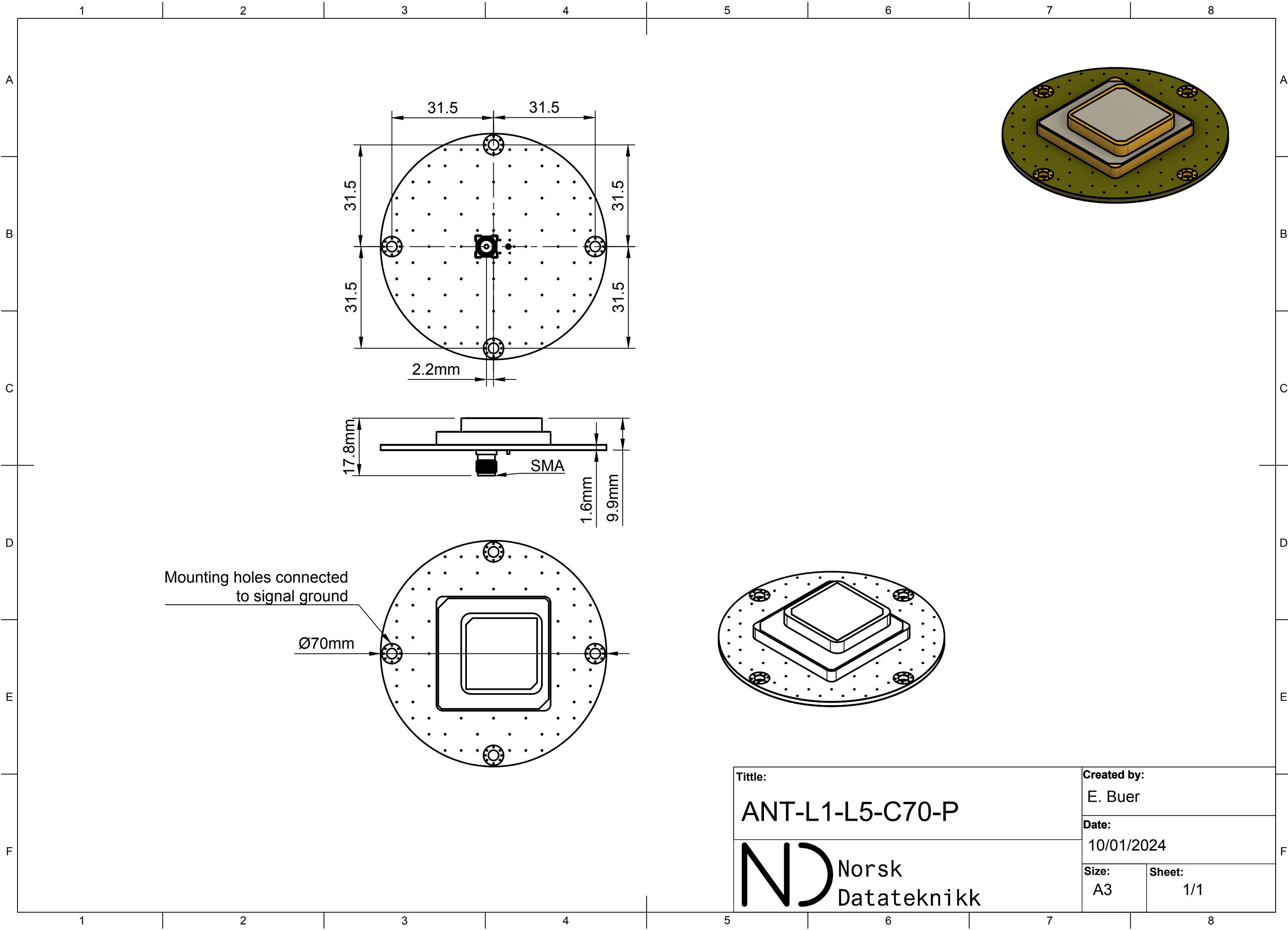


APPLICATIONS, GPS EMULATION FOR HIL TEST

The ANT-L1-L5-C70-P is perfect for generating GNSS signals for hardware in the loop testing of products. A simple GPS emulation setup can be made with a BladeRF SDR, ANT-L1-L5-C70-P and an SMA cable.

Radiating GNSS signals should be done in shielded rooms or other isolated environments.





Title: ANT-L1-L5-C70-P		Created by: E. Buer	
		Date: 10/01/2024	
ND Norsk Datateknikk		Size: A3	Sheet: 1/1