

SLHA00015 Manual

MySensors nRF24 USB Manual

1. Overview

This USB dongle can be plugged into any controller supported by MySensors to communicate with sensors using the same nRF24 radio. Browse [our store](#) to find compatible sensors you can buy, but most importantly, we encourage you to [build your own](#).

2. Key features

- Designed for [MySensors](#) with a nRF24 radio
- Opensource firmware
- Compact

3. Applications

- Home automation

4. Setup instructions

Once plugged into your controller (Raspberry Pi for example), the gateway will appear as a USB to serial device.

On Linux operating systems, you can use the `ls -l /dev/serial/by-id` command to see which `/dev/tty` it was assigned. On Windows operating systems, you can use the device manager to see which COM port it was assigned. That information will be useful next.

To further help you locate the port, current hardware revisions use a CH340 USB to UART IC with a VID of 0x1A86 and a PID of 0x7523.

The dongle ships with version 2.3.2 of MySensors and uses a baudrate of 115200.

4.1. Home Assistant

Refer to the official documentation on the [Home Assistant website](#).

If you are using “Home Assistant Supervised” or “Home Assistant Core” as listed in the alternative installation methods available for experienced users, it is likely that you will need to allow the linux account to access USB peripherals. More information about this in this [forum topic](#).

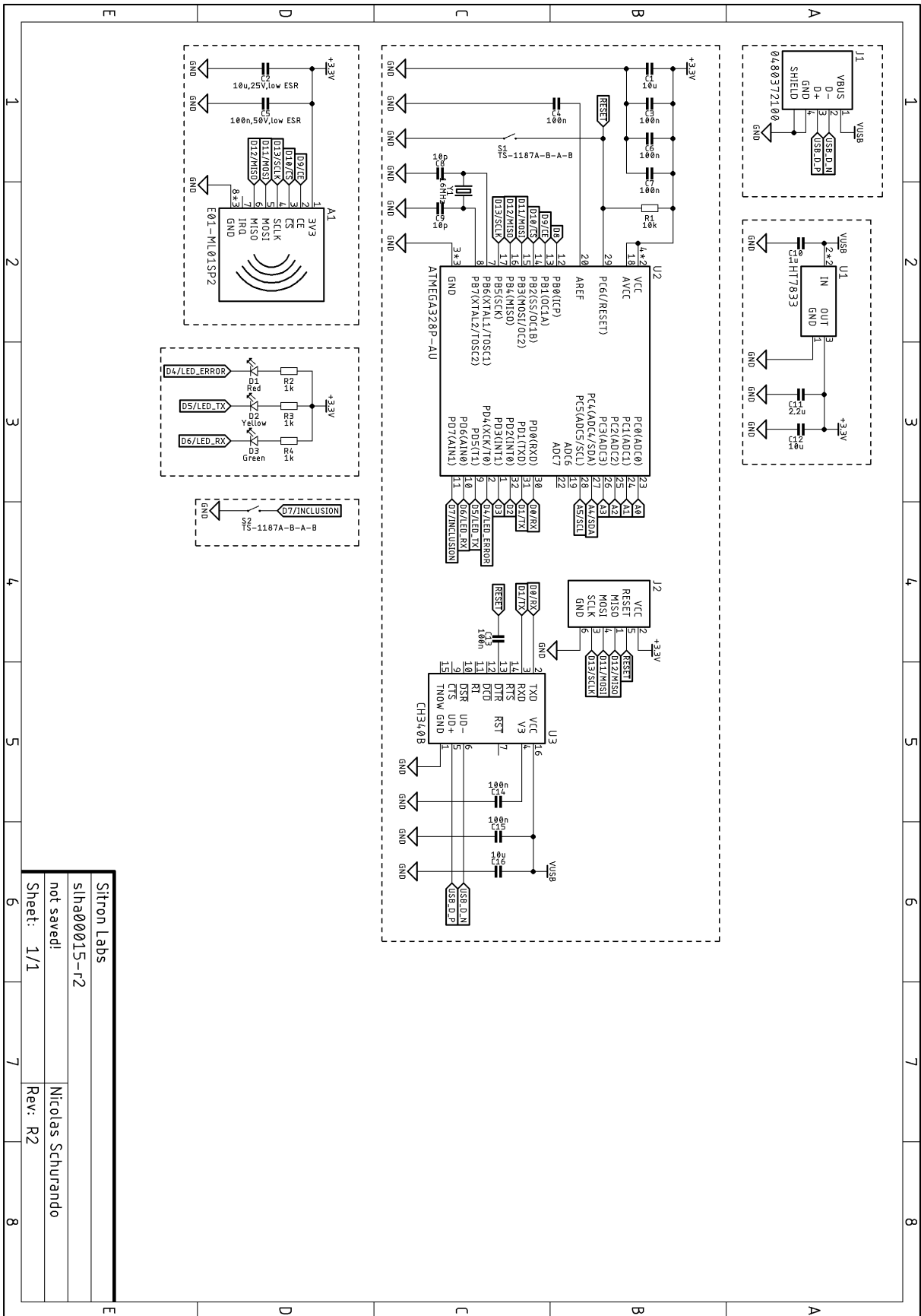
4.2. With Domoticz

Refer to the official documentation on the [Domoticz website](#).

4.3. Other controllers

A full list of supported controllers and links to respective instructions is available on the [MySensors website](#).

5. Schematic



Sitron Labs
slha00015-r2
not saved!
Sheet: 1/1
Nicolas Schurando
Rev: R2

6. Contact

If you need any help, or share your experience, be it good or bad, don't hesitate to reach out. Send us a message on [Tindie](#) by clicking on the "Contact Store" button, or join our [Discord](#) server.