



## Neo Geo MV1FZ(S) Stereo PCB

### Description

---

**WARNING! This kit requires the removal of 2 resistors from the MVS board, soldering connections to the stereo PCB, and verifying continuity with a multimeter. Do not attempt installation if you are not experienced performing these tasks!**

Fully assembled PCB kit. Adds RCA connections to Neo Geo MV1FZ and MV1FZS boards for line-level stereo audio. A physical switch allows changing between RCA stereo and JAMMA mono audio. Mounts with provided hardware.

The kit includes:

- 1 x top stereo PCB
- 1 x bottom PCB
- 2 x 6mm M3 screws
- 2 x 15mm female-female brass standoff
- 1 x wire harness

### Compatibility

---

This kit is compatible with Neo Geo MV1FZ and MV1FZS boards.

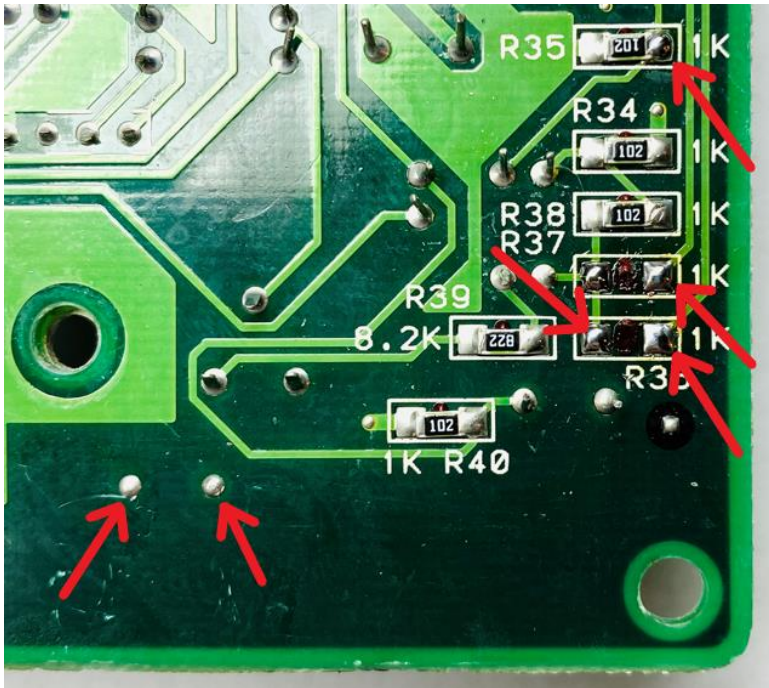
### Installation

---

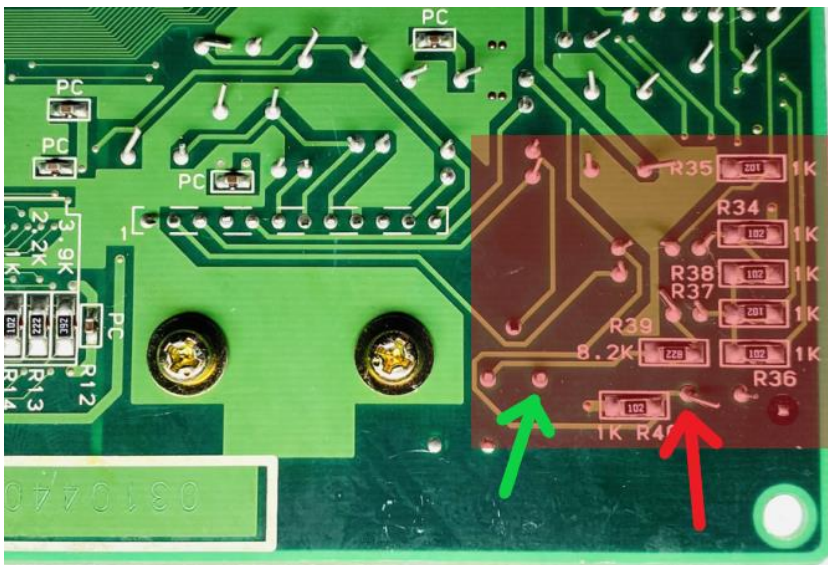
1. On the bottom of the MVS PCB, locate and remove resistors R36 and R37.



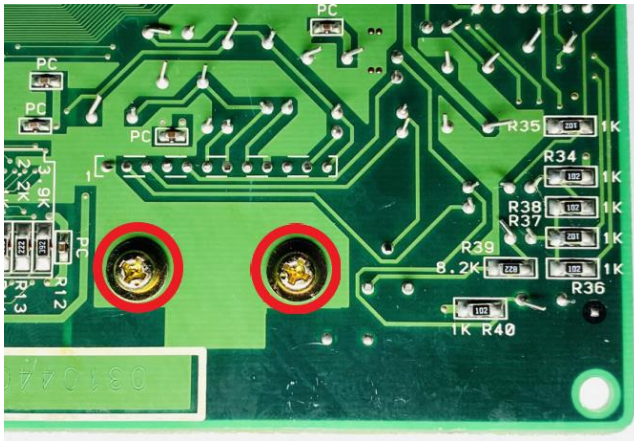
2. Prep the 6 solder points indicated in the picture below. You will be soldering the bottom stereo PCB to these connections for routing to the top stereo PCB in a later step.



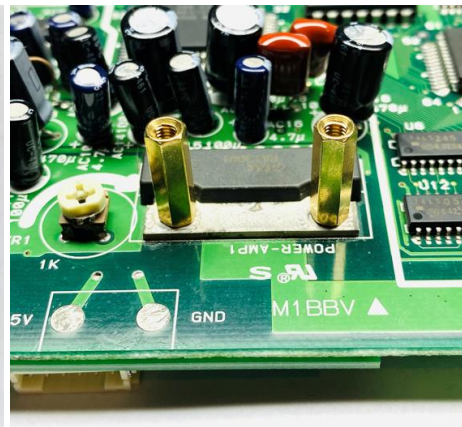
3. Straighten any bent through-hole component legs in the highlighted area in the picture below. An example of a bent leg indicated by red arrow; straight leg indicated by green arrow.



- Remove the 2 screws from the audio amp shown in the picture below. Save the screws and washers, the nuts are not required for mounting the stereo PCB.



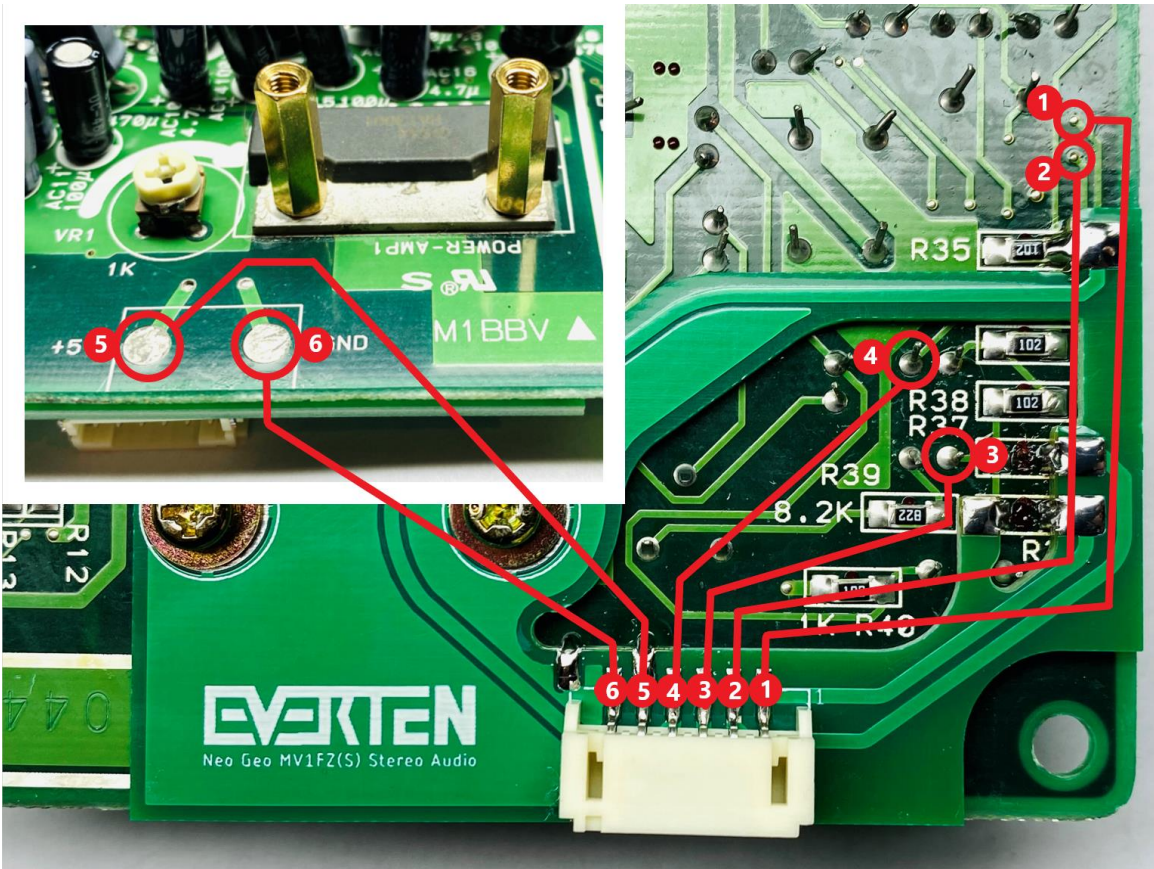
- Align the bottom stereo PCB board with the screw holes and check alignment of the castellated holes with the solder points indicated in Step 2. Using the screws you removed in the previous step, mount the bottom stereo PCB, using the brass standoffs included in the kit in place of the nuts.



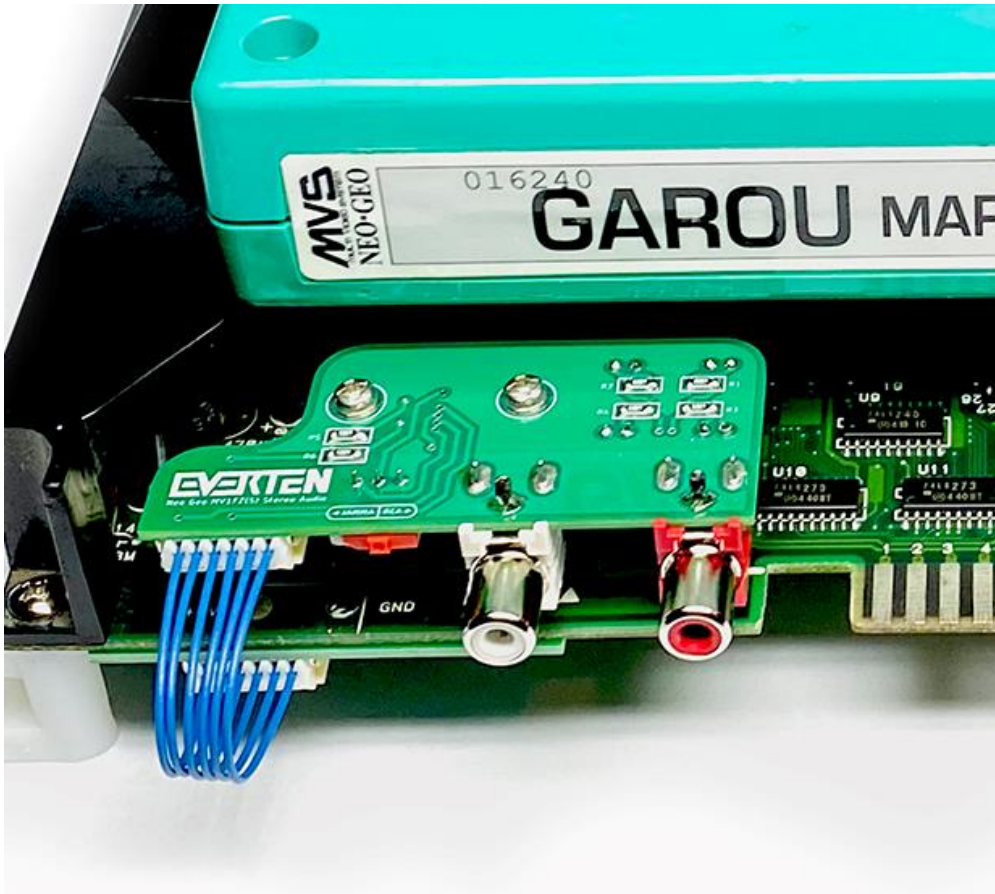
- Carefully solder the 6 castellated holes on the bottom stereo PCB to their respective connections on the MVS board.



- IMPORTANT!** Verify continuity with a multimeter from test points in the diagram below back to the bottom stereo PCB wire harness connector legs. This is a crucial step!



- Using the screws included with the stereo PCB kit, mount the top stereo PCB to the brass standoffs and connect the included wire harness between the top and bottom PCB boards.



- Move the sliding switch to the right position for stereo RCA or to the left for JAMMA mono. **Do not adjust the switch while the MVS is powered on.**

- Enjoy!