

# ANAVI Macro Pad 8

## DATASHEET

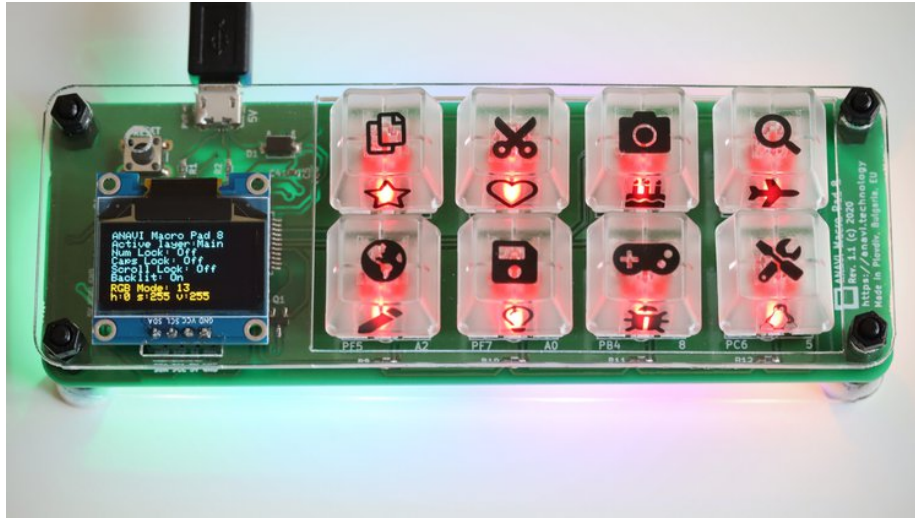


Figure 1: ANAVI Macro Pad 8

ANAVI Macro Pad 8 is an open source, custom-programmable, mini 8-key keyboard/keypad. Each key can be reprogrammed to activate a macro or even a dedicated shortcut - all without any coding experience! Powered by the advanced, but easy-to-use Quantum Mechanical Keyboard (QMK) open source firmware.

ANAVI Macro Pad 8 is certified by the Open Source Hardware Association under UID BG000072. Designed with KiCad. Made in Plovdiv, Bulgaria, EU.

ANAVI Macro Pad 8 can be customized to fit multiple use cases across various industries: video or audio editing, video conferencing software, entertainment broadcasting, product and graphic design, gaming, engineering, programming, etc. It boosts your daily productivity by providing amazing level of control with gorgeous light effects on your fingertips!

## Features & Specifications

- **Keyswitches:** Eight Cherry MX-style pads
  - Developer Kit includes eight Gateron red, linear, non-clicky mechanical switches and transparent keycaps with red LED backlighting

- **Peripherals:**
  - S2812B addressable LED strip for bottom-lighting
  - Optional 0.96" mini OLED display
- **MCU:** Microchip ATmega32U4
- **Connectivity:** Micro USB
- **Firmware:** Quantum Mechanical Keyboard (QMK) open source firmware and Arduino sketches
- **Compatibility:** Windows, macOS, and Linux support
- **Dimensions:** 135 x 47 mm (5.32 x 1.86 inches)



Figure 2: ANAVI Macro Pad 8

## Kit Configurations

	Maker Kit	Developer Kit
<b>ANAVI Macro Pad 8</b>	Yes	Yes
<b>WS2812B LED strip</b>	Yes	Yes
<b>8 Gateron red mechanical switches</b>	Optional	Yes
<b>8 translucent keycaps</b>	Optional	Yes
<b>Keyswitch backlighting</b>	Optional	Yes, red LEDs
<b>Acrylic enclosure</b>	Optional	Optional
<b>Mini OLED display</b>	Optional	Optional

**NOTE:** USB to Micro USB cable is **not** included in any of the kits.

### **Developer Kit (CS-ANAVI-MP8-1)**



Figure 3: ANAVI Macro Pad 8 Developer Kit

The Developer Kit does **not** require any soldering. It features Gateron red mechanical switches and translucent keycaps with red backlighting. The Developer Kit is easy to get started with, and it is perfect even for newbies. Just pop the keycaps on, and you're ready to go.

### **Maker Kit (CS-ANAVI-MP8-2)**

The Maker Kit is for advanced users only. It requires soldering, but provides you the opportunity to pick your own mechanical switches (compatible with Cherry MX plate footprint), color of 3 mm backlit LEDs, and keycaps.

### **Acrylic Case (CS-ANAVI-MP8-3)**

This enclosure gives your ANAVI Macro Pad 8 a bit of protection, lifts the board off the table so the underlighting is maximally effective, and helps keep the board in place with four rubber bumpers. The acrylic panels are screwed together easily with included hardware.

### **Mini OLED Display (CS-ANAVI-DISPLAY-1)**

A 0.96" mini OLED display that connects with the board over an I<sup>2</sup>C interface. A short extension cable is also included if you'd rather have the display slightly separate from the board. The display can be



Figure 4: ANAVI Macro Pad 8 Maker Kit

programmed with whatever information you want through Arduino IDE.

### **Switches, keycaps and red LEDs (CS-ANAVI-MP8-4)**

8 Gateron red switches, translucent keycaps and 3mm red LEDs as components for soldering. Suitable for ANAVI Macro Pad 8 Maker Kit (CS-ANAVI-MP8-2).

### **Resources**

- User's manual
- Quantum Mechanical Keyboard (QMK) configurations
- For more information visit <https://anavi.technology/>