



Sega ST-V IO Board

Description

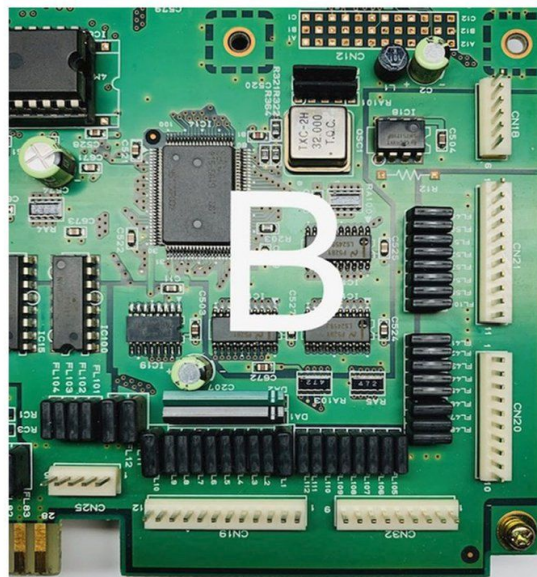
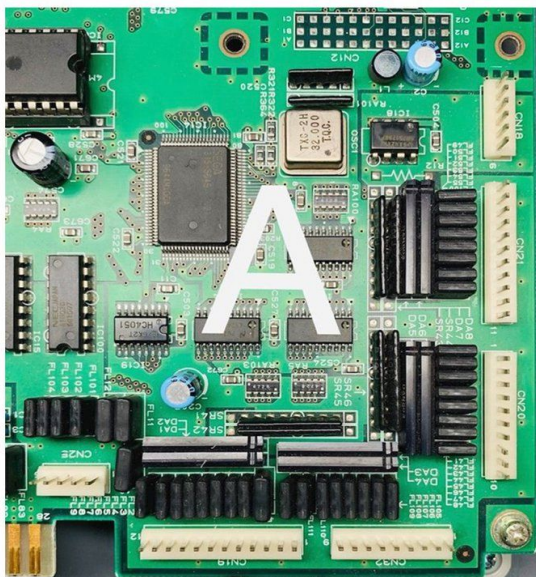
Fully assembled PCB kit. Adds RCA jacks to the Sega ST-V for line-level stereo audio and kick harness connections (CPS1 and CPS2), no soldering required. Connects to the stereo headers at CN24 via the included wire harness. Mounts to the headers at CN25 and CN21.

The kit includes:

- 1 x IO PCB
- 1 x wire harness

Compatibility

This kit is compatible with both known ST-V board revisions and the [Lions3 acrylic case](#). You must specify board layout **A** or **B** during checkout. **B** layout boards normally have a factory IO which needs to be removed to mount the replacement IO board. Please review the reference photos below before ordering. Note the distances between headers and PCB edge. The **B** layout is pictured with the factory IO board removed.

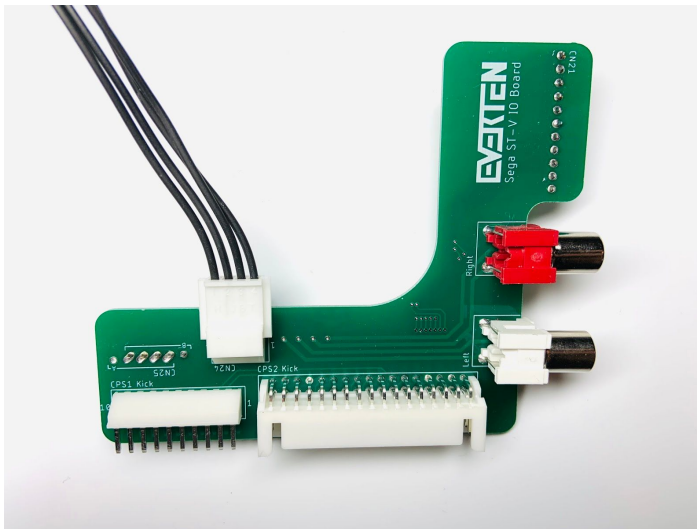


Installation

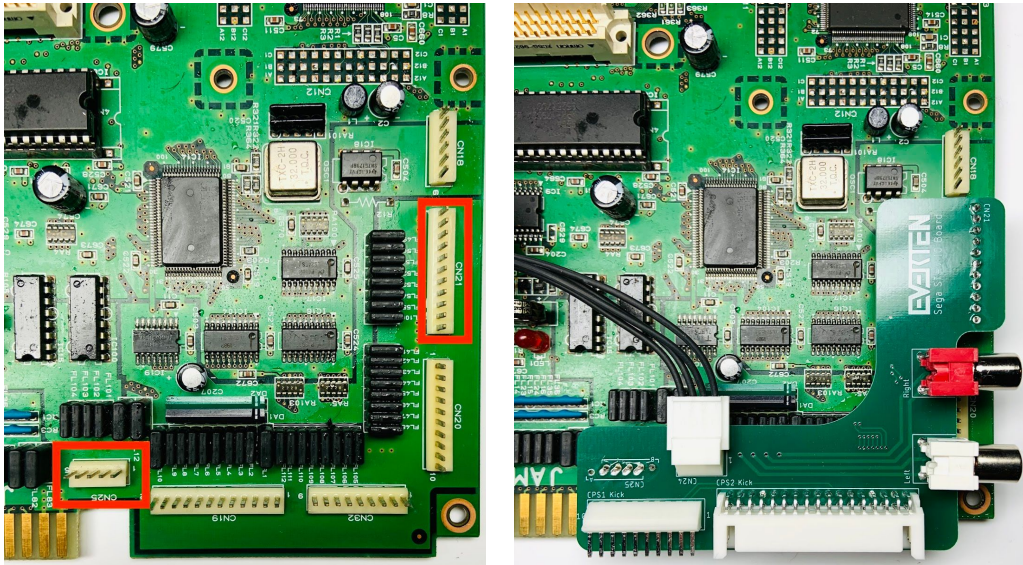
1. For B layout boards, remove the factory IO board if installed.



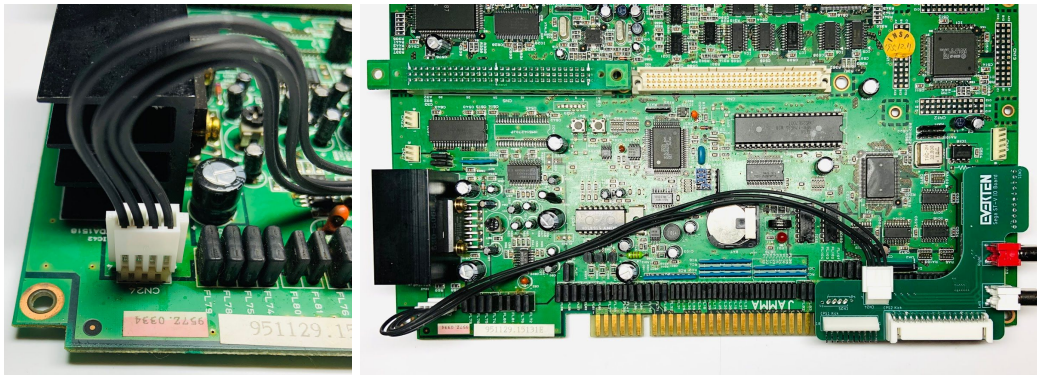
2. Check CN24, CN25, and CN21 for any bent pins and straighten if necessary.
3. Connect the included wire harness to CN24 on the IO board.



4. Connect the IO board to the Sega ST-V board by lining the connectors up with CN25 and CN21 and pressing down slowly, ensuring all header pins line up with the IO receptacles.



5. Connect the other end of the included wire harness to CN24.



6. Enjoy!

Notes

- The wire harness is straight-wired as pictured



- Newer revision IO boards are dual-compatible with **A** and **B** layouts. The female socket at CN25 can be desoldered and repositioned to the **A** or **B** position.

