

Before installation

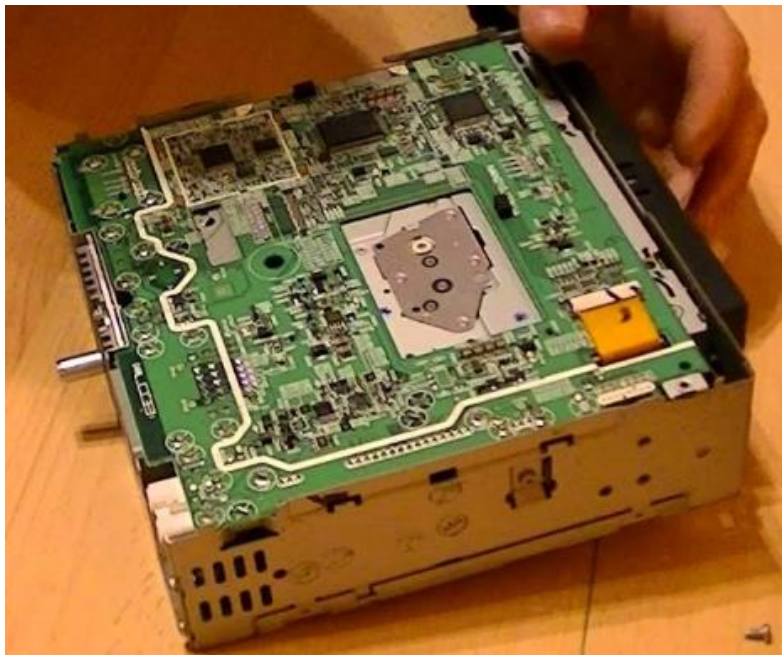
There are some things to know before buying or installing Bluetooth module:

- Bluetooth module works with all types of audio systems in V50, S40, C30 and C70.
- CD function MUST be working.
- CD disc must be inside player while Bluetooth is in use.
- CD function doesn't disappear. When Bluetooth isn't in use, a CD disc plays.
- Bluetooth module doesn't provide hands-free calls and control from steering wheel.

Different types of CD units

There are different types of CD units in previously mentioned cars. Bluetooth module works with all of them. The CD units differs only in difficulty of disassemble. Here are the types which I know:

- 6 CD



- single CD without internal amplifier



- single CD with internal amplifier



Installation

Principle of installation

The main principle of Bluetooth module installation is to disassemble CD unit and insert module between CD drive and main board of CD unit. Connection between CD and main board of CD unit is made with 18 pin 1mm pitch flat cable.

Before installation:

CD drive



Main board



After installation:

CD drive



Bluetooth module



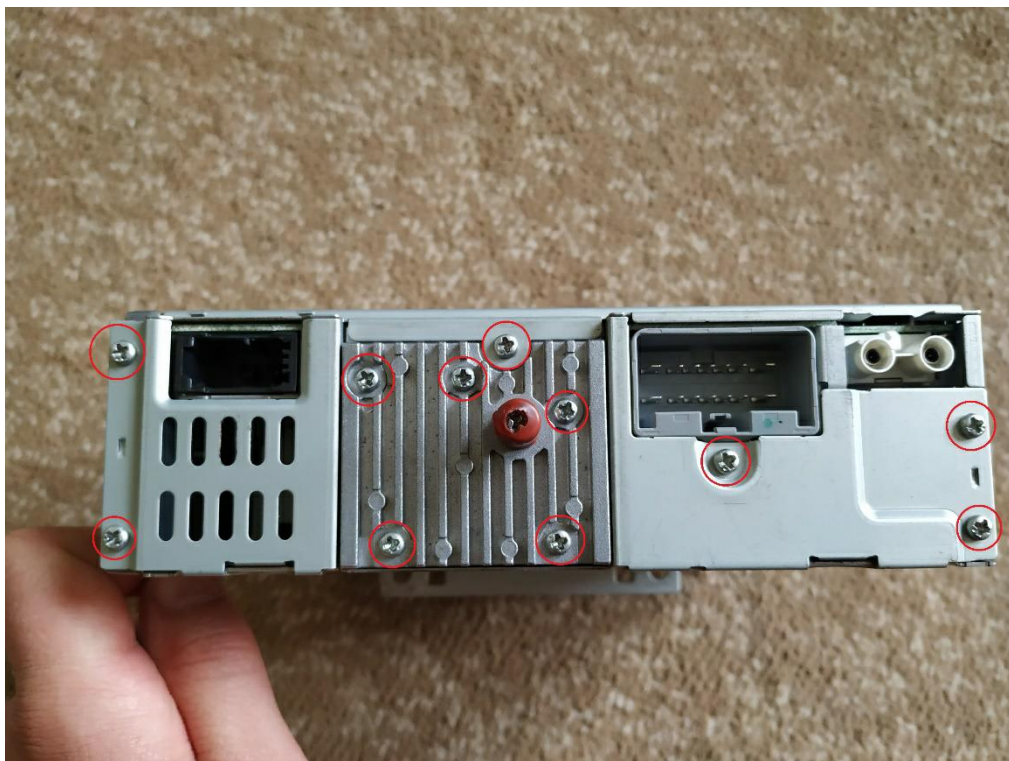
Main board



Example of installation

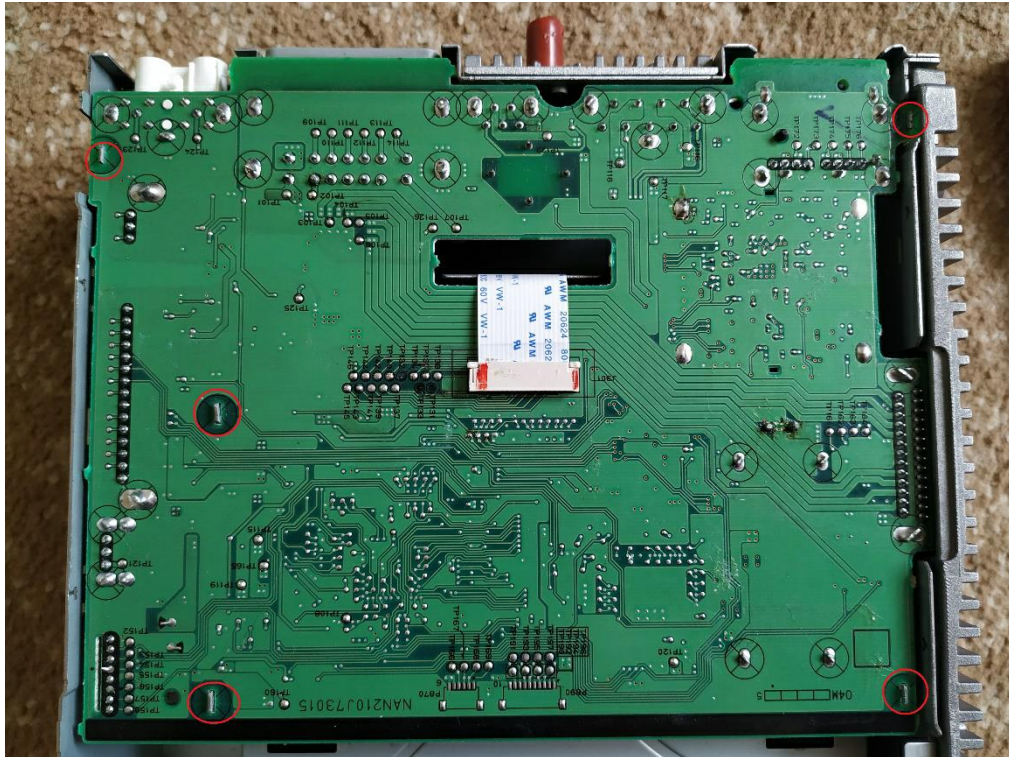
Installation process will be shown with third type of CD unit (single CD with amplifier).

- Unscrew marked screws. I recommend to take pictures of screws location, because they are different length.

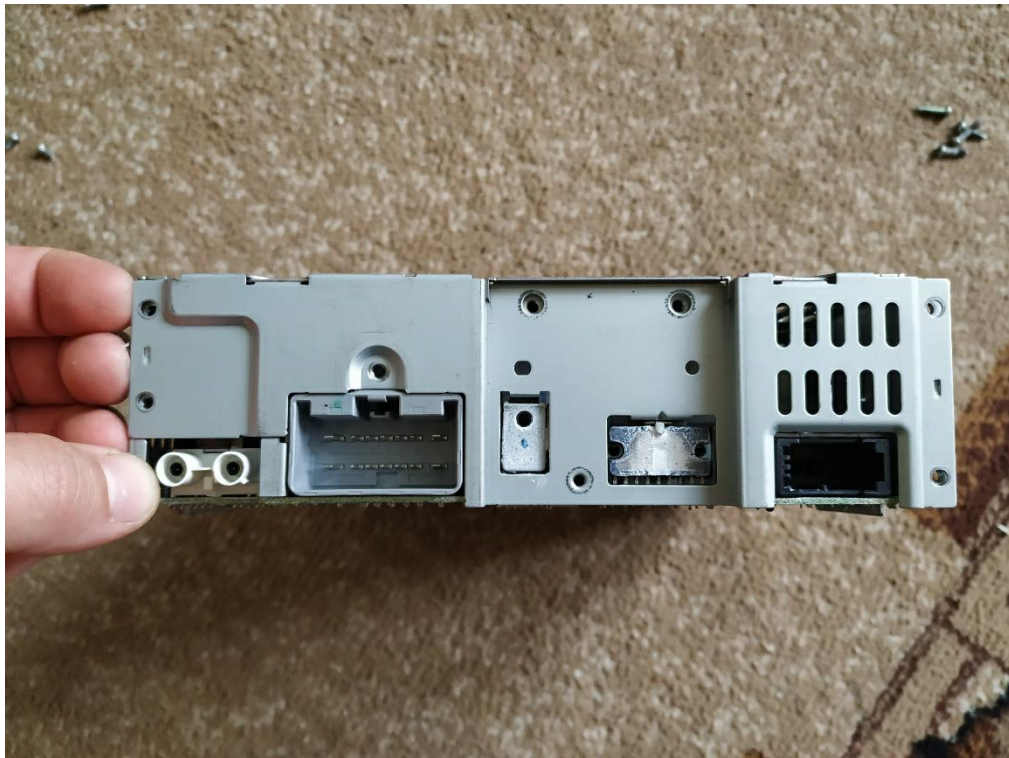


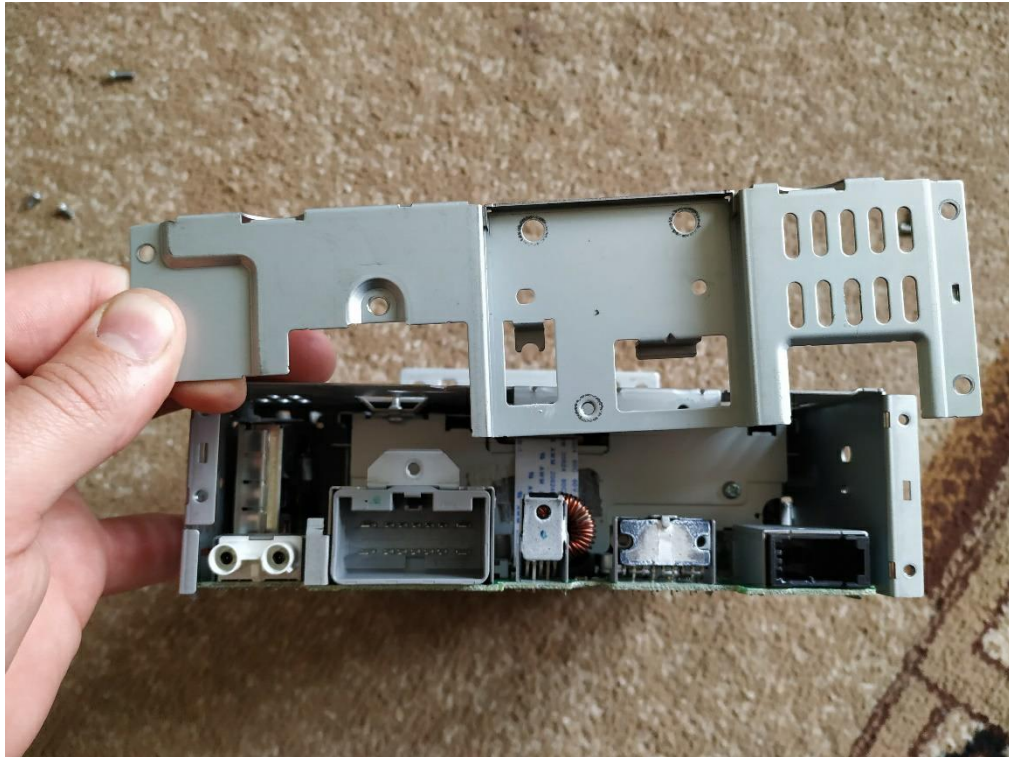


- When all screws are unscrewed – take upper cover off. After that unbend marked metal brackets.

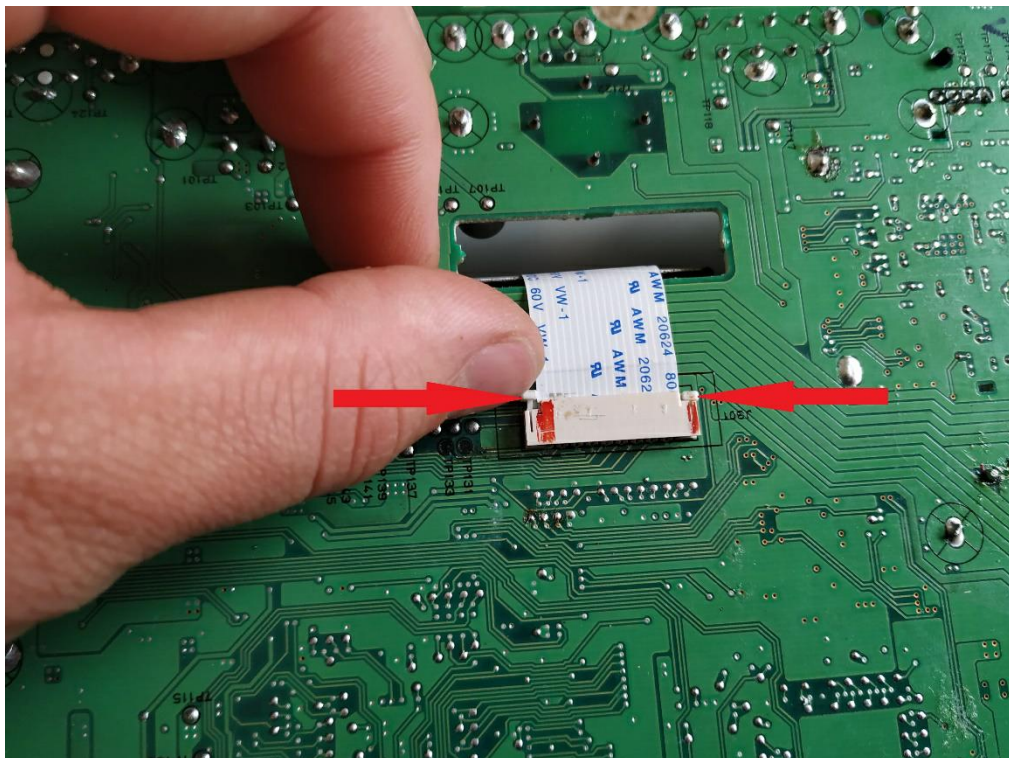


- When brackets are unbent – take back cover off.

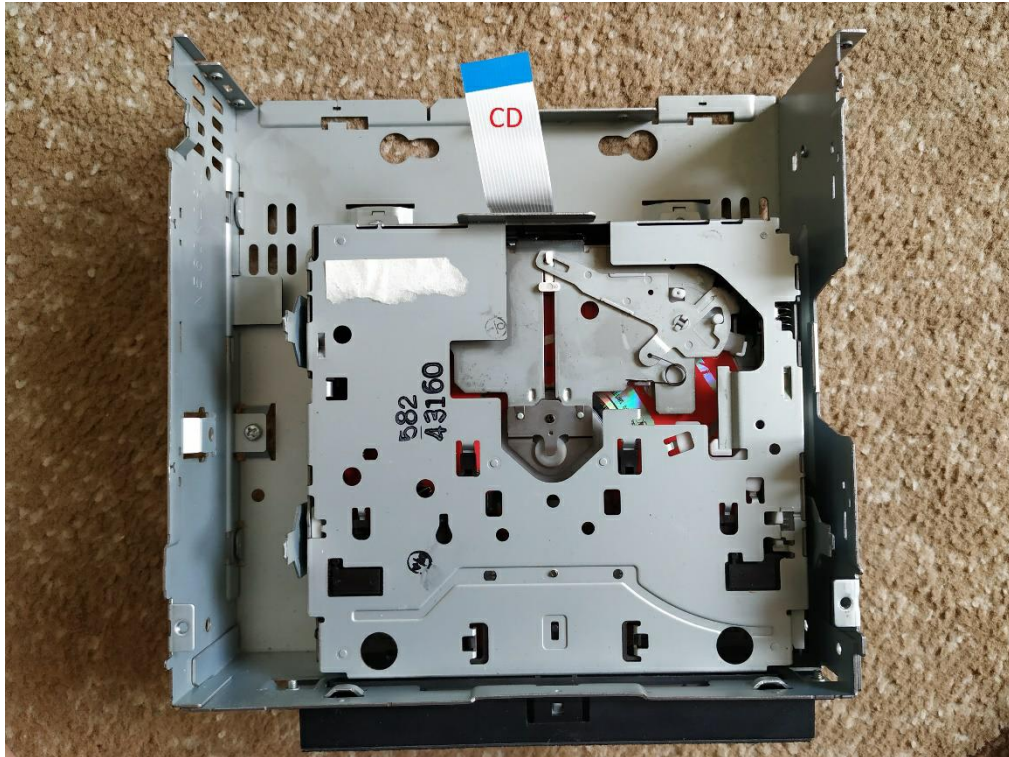




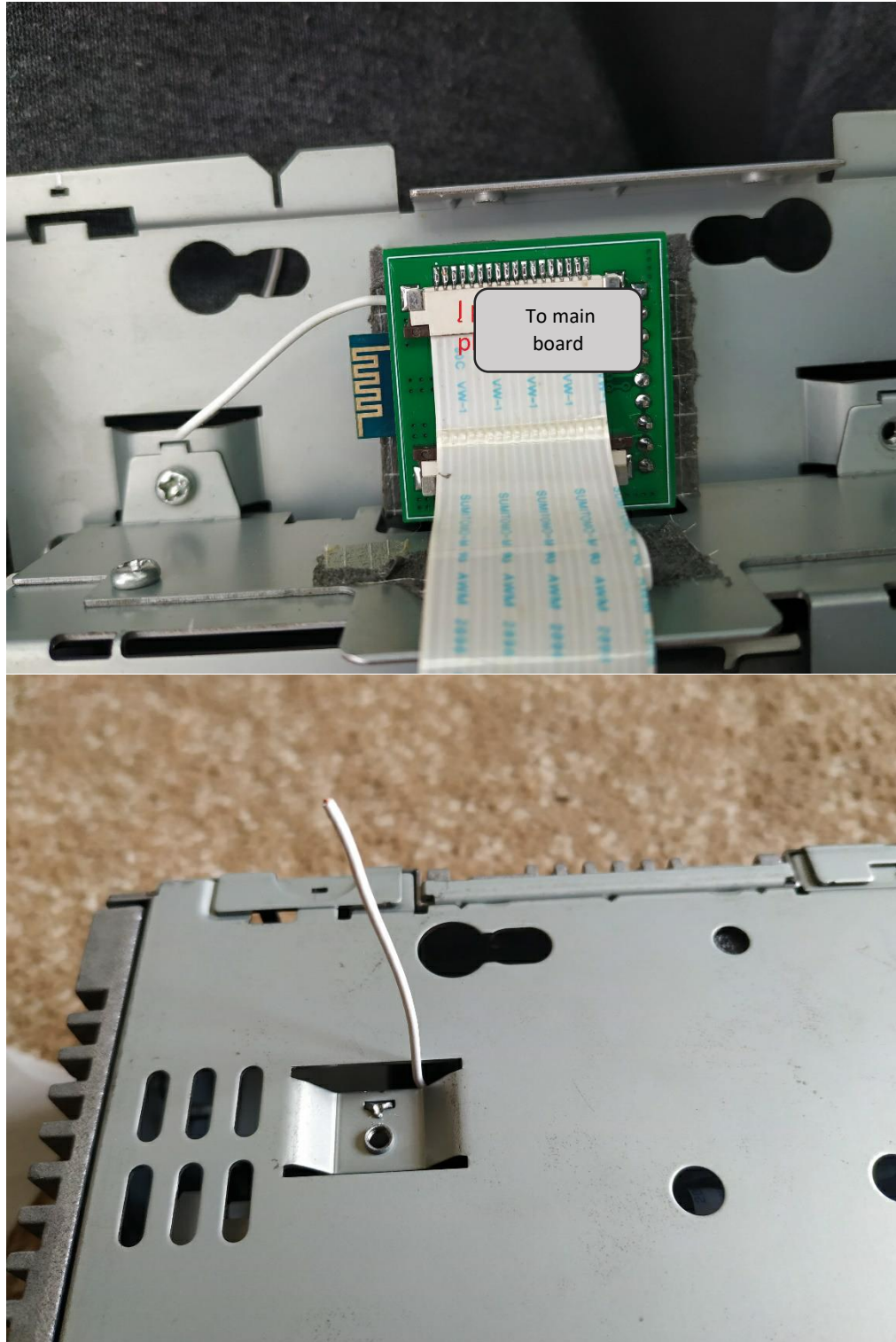
- After that unplug flat cable connector on main board. To unplug you need to pull out locks which are marked with arrows. After disconnecting main board, take main board off from the case.



- After taking main board off everything should look like this:



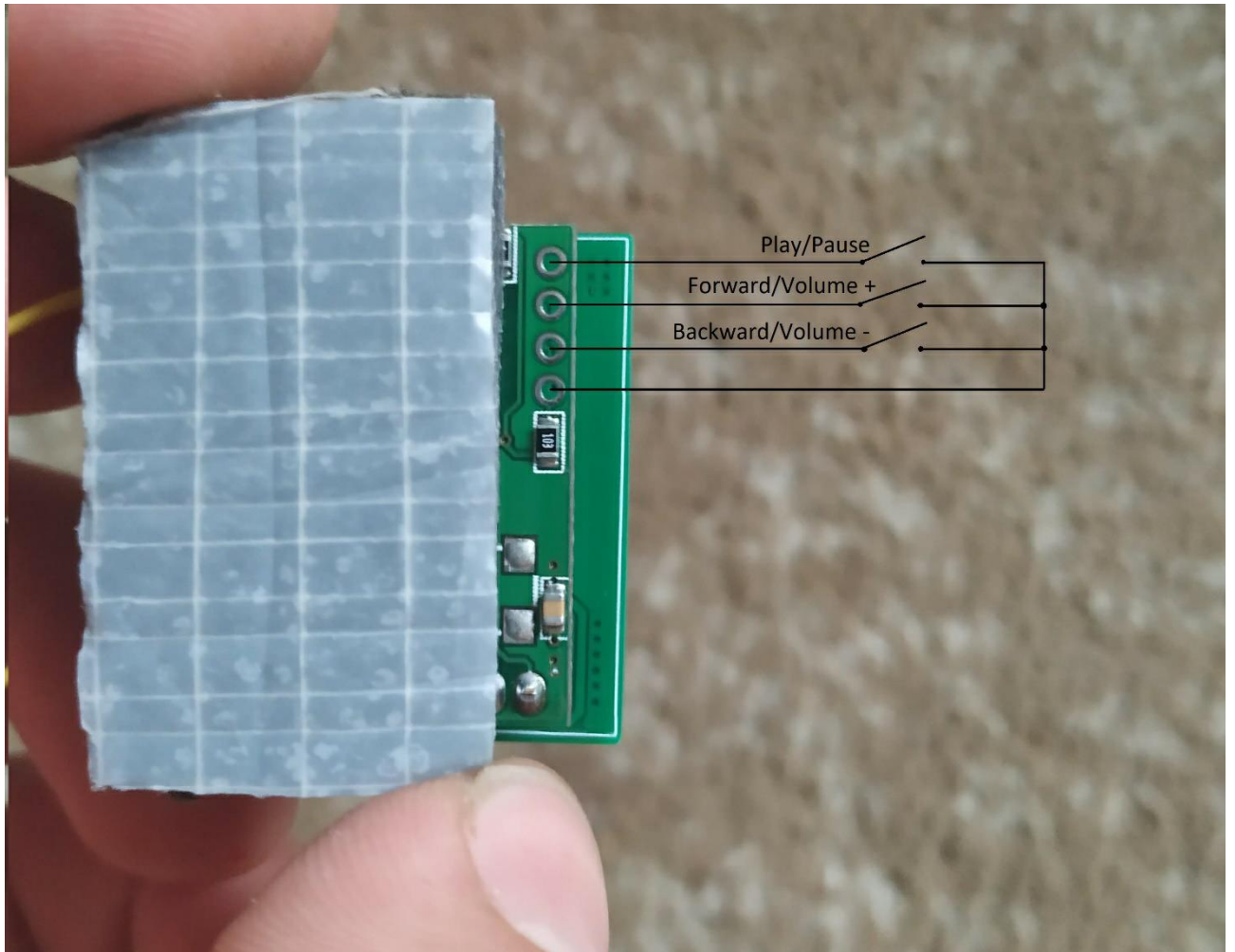
- I recommend to clean contacts of original flat cable's both ends before connecting everything together. For cleaning use simple eraser. Flat cable which is going from CD drive needs to be connected to connector of Bluetooth module which is named as "CD drive". Given extra flat cable needs to be connected to Bluetooth connector named as "Main board". All connections should be made with the contacts facing up. Do not forget to push locks of connectors in. Stick Bluetooth module with given thick double sided tape in the most appropriate place. Take antenna wire of Bluetooth module out from closest gap or hole.



- After these steps everything can be assembled in reverse order. Do not forget to connect flat cable from Bluetooth “main board” connector to main board.
- When everything is assembled and CD unit is installed in car you should test if everything works. To do so you need to insert CD disc to car’s CD player and press CD button on waterfall panel. You will hear music from CD. Connect to Bluetooth named “ VOLVO BT-AUDIO”. Music from CD should disappear. At this time you can stream music from yours phone to cars stereo.

Possibility to add external buttons

There is a possibility to control phone through external buttons, but I left this opportunity to implement for yourself due to lack of idea where to neatly install buttons.



Link to video of taking out CD unit

<https://www.youtube.com/watch?v=3ADiJ42unps> (Video borrowed).