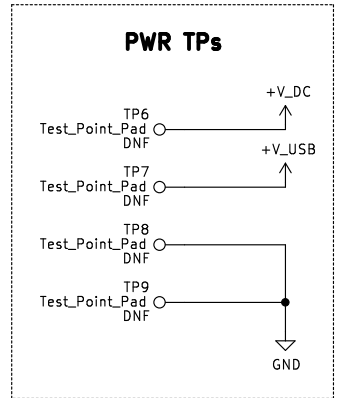


Note:
Banana plugs must be spaced
centre-centre 0.75" (19.05 mm)

Note:
JP open to disable LED
JP closed enable LED

Note:
Fit either sense resistor,
OR jumper or solder bridge

Note:
Option to fit
dedicated
charging port
resistor

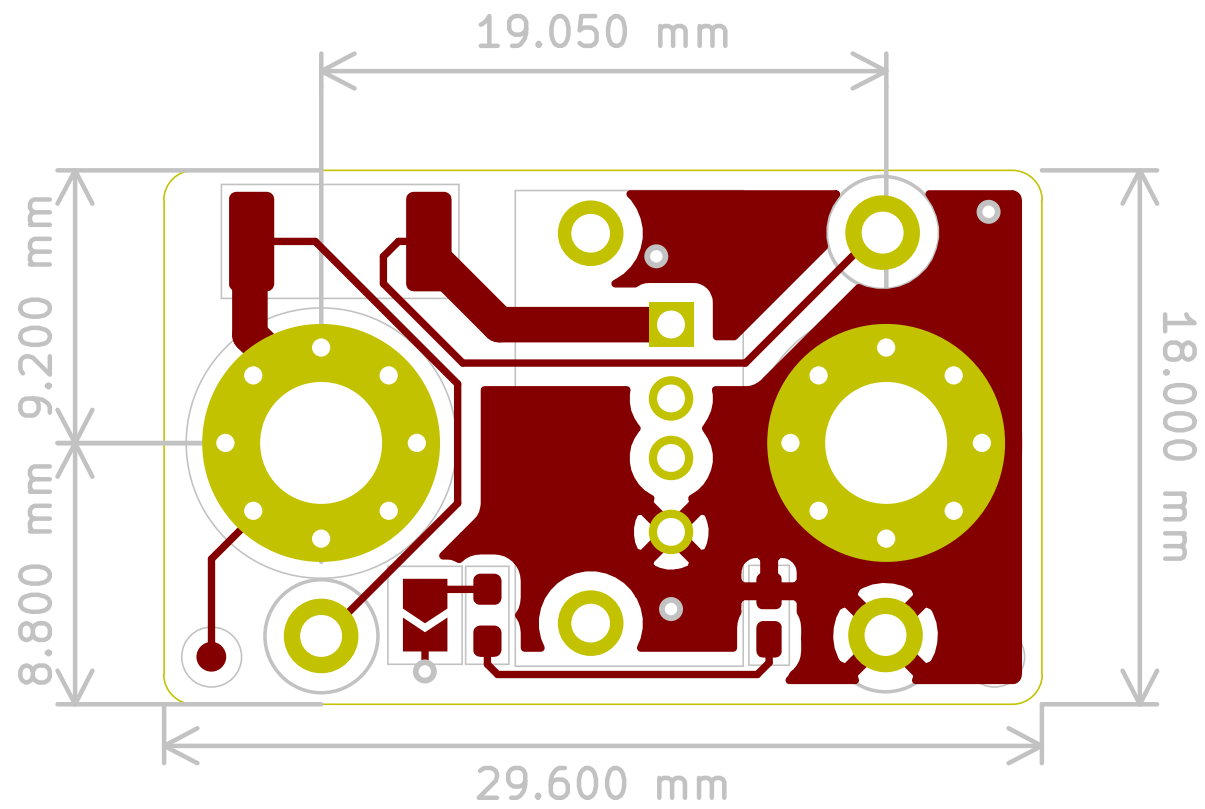


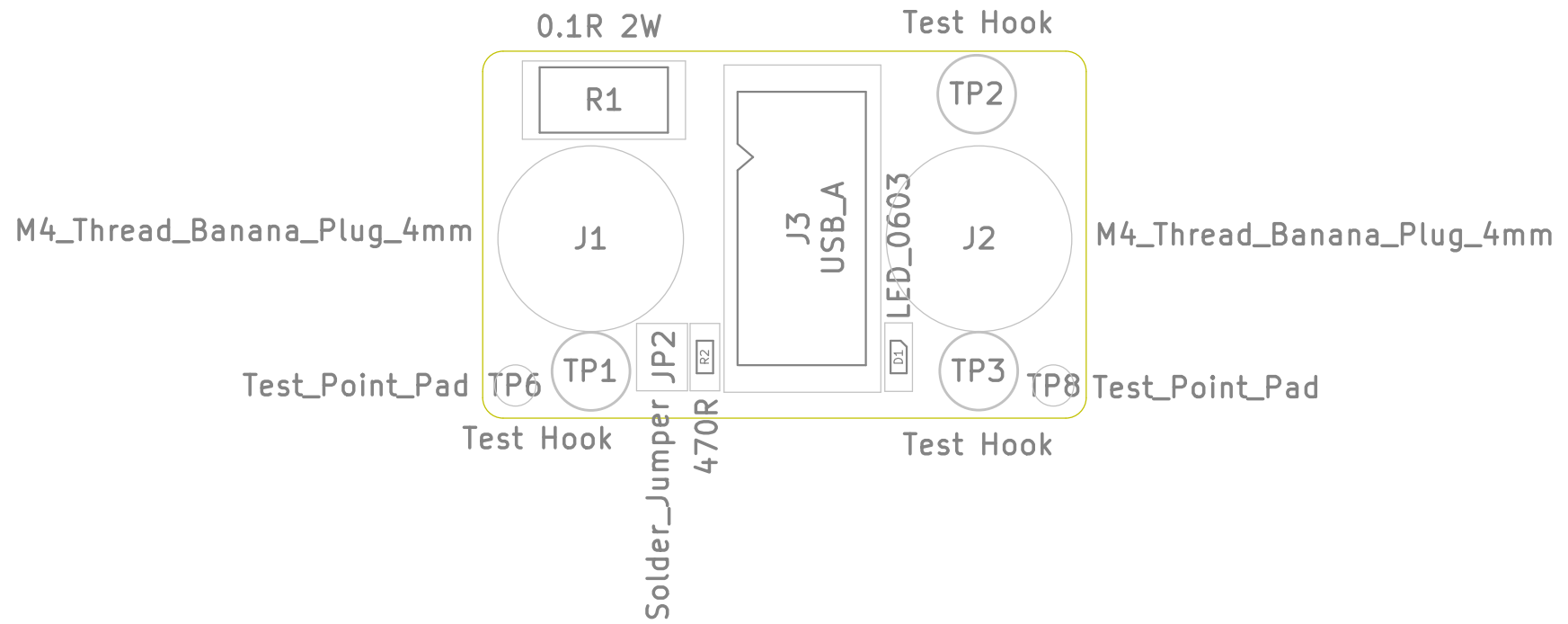
Variants

- | | |
|---------------------|--------------------------|
| USBANANA01 | USBANANA01-SR |
| - JP1 open | - JP1 open |
| - R1 Fitted with OR | - R1 Fitted with 0.1R 2W |
| - JP2 closed | - JP2 open |
| - TP1,2,3 DNF'd | - TP1,2,3 fitted |
| - R3 DNF'd | - R3 DNF'd |

IMPORTANT NOTE:
This adaptor PCB is intended for the testing/prototyping of USB powered electronic projects. If used incorrectly it may cause damage to attached USB devices. For that reason, it is not recommended that this adaptor PCB is used to charge consumer devices such as mobile phones, tablets, laptops, power banks or similar. For the same reason care should be taken when setting voltage, polarity and current for any connected device.

USBANANA01		
naPCB - Nicholas Atkins		
Sheet: /		
File: USBANANA01.sch		
Title: USB Bananaplug Adaptor Single Space		
Size: A4	Date: 2020-08-01	Rev: 0-B
KiCad E.D.A. kicad (5.1.6)-1	Id: 1/1	





Solder_Jumper JP1

Test_Point_Pad  TP7

Test_Point_Pad  TP5

Test_Point_Pad  TP4

Test_Point_Pad  TP9