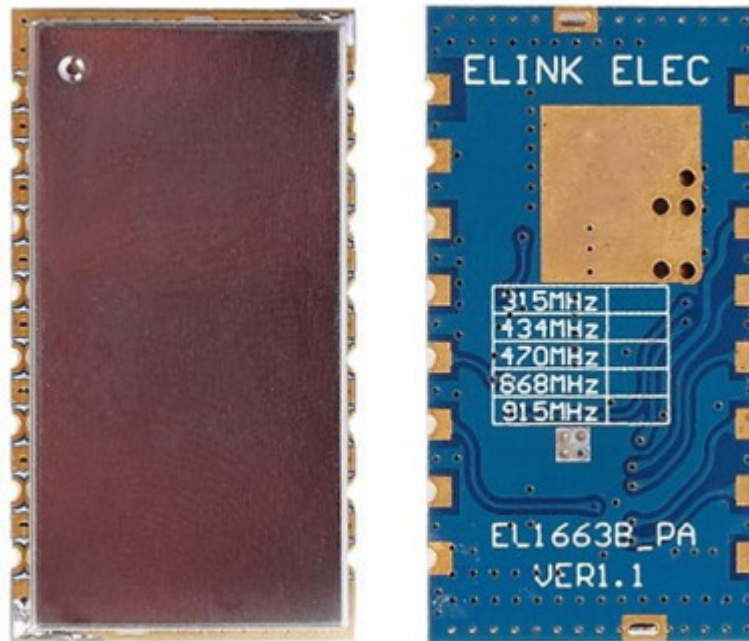


# EL1663B\_PA\_1W High power wireless module



## 1, Description:

EL1663B\_PA\_1W is a high power wireless module with 1W output power. It adopts SI4463 core and configure internal parameters via SPI interface. Communication distance measured from the bridge come to 10KM (air rate 2.4K, frequency deviation 4.8K)

Si446x series from Silicon Labs is 119MHz ~ 1050MHz transceiver with high performance and low current and is one of the member of EZRadioPRO series, Including complete transmitter and receiver. Sensitivity is up to -126dBm, Si4464 operating frequency is 119MHz ~ 960MHz, its maximum output power is up to +20 dBm, PA support +27 DBm or +30 dBm. It adopts (G) FSK, 4 (G) FSK, (G) MSK, OOK and ASK modulation, the data rate is up to 100bps ~ 1Mbps, operating voltage is 1.8 ~ 3.6V, shutdown current is 30nA, standby current is 50nA. It is mainly used in Smart meters (802.15.4g & MBus), remote control, home security and alarm, garage door openers and, telemetry, Home automation, sensor network, health monitoring.

Si446x from Silicon Labs' is a high performance, low current transceivers, covering the sub-GHz band from 119MHz ~ 1050MHz. The transceiver is part of EZRadioPRO family, including complete transmitters, receivers and transceivers series, which covers a wide range of applications. All parts/components have excellent sensitivity (to -126dBm), while achieving lower operating and pending electrical energy consumption.

## 2, Features

size: 38x20x2 (mm)

Working frequency: 434MH 470MH 868M 915M

Transmitting power: 30dBm

Transmitting modulation: OOK/FSK/GFSK/4FSK/4GFSK

Working voltage: 5~8V

Voltage	Output power (dBm)	Output power (mW)	Current (mA)
5	28	630.9573445	320
6	29	794.3282347	370
6.5	29.5	891.2509381	410
7	29.7	933.2543008	430
8	30.2	1047.128548	450

Frequency range: 119 MHz to 1050 MHz

Sensitivity: -126dBm

Modulation:(G)FSK, 4(G)FSK, (G)MSK, OOK, ASK

PA support +27 or +30dBm

Low consumption

Ultra low current off mode

30NA off, 50nA standby

Data air rate=100bps to 1Mbps

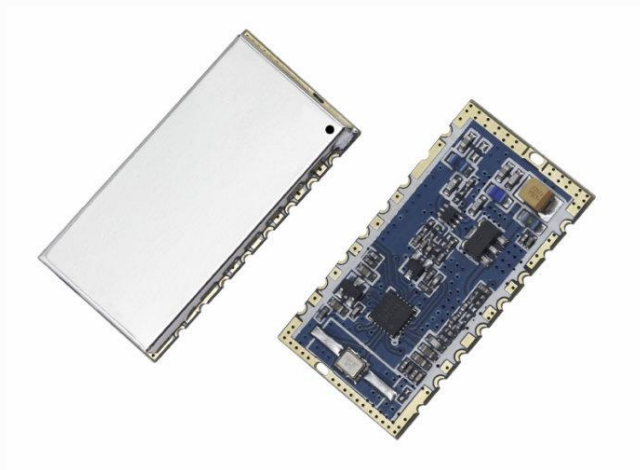
### SI4463 and SI4432 :

Parameters	EL1663B_PA_1W	EL4463_100MW	EL4432_100MW
Frequency range	119~1050MHz	119~1050MHz	240~960MHz
sensitivity	-126dBm	-126dBm	-121dBm
Transmitting power	30dBm	20 dBm	20 dBm
Off current	30nA	30nA	50nA
Standby current	50 nA	50 nA	800nA
Receiving current	10.0mA	10.0mA	18.5mA
Transmitting current	450MA	75MA	85MA
DATA rate	0.123~1M	0.123~1M	0.123~256K
Distance	10000M 434M 2.4K	2800M 434M 2.4K	2300M 434M 2.4K

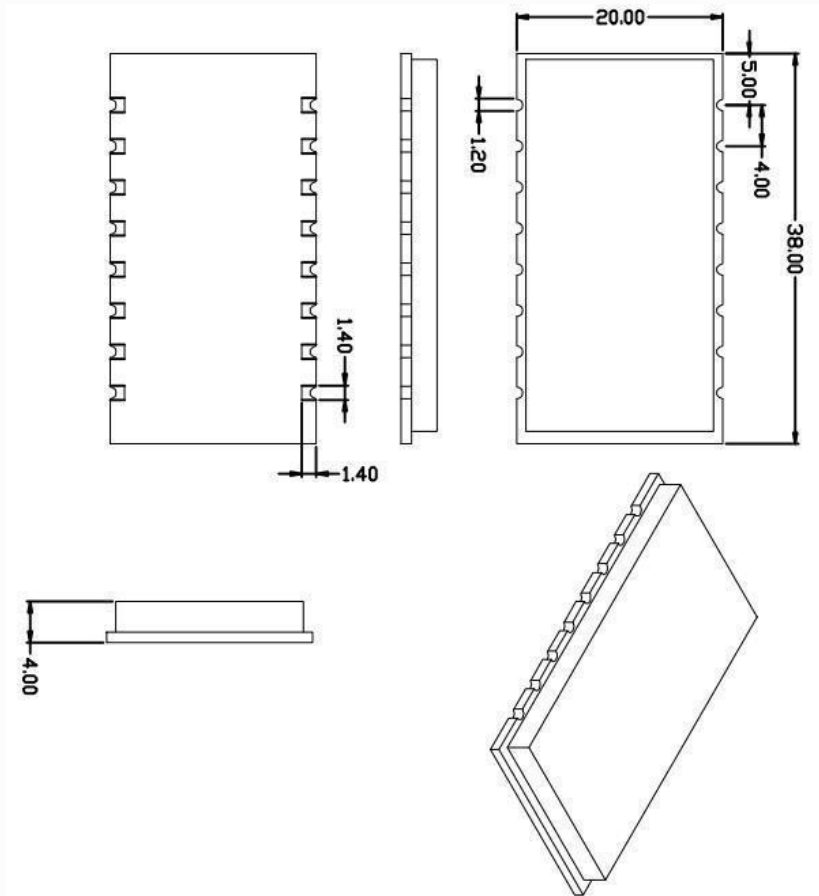
### 3, Application:

- Ø home automation and security access control system
- Ø wireless meter reading
- Ø vehicle anti-theft
- Ø wireless sensor
- Ø remote wireless data transmission
- Ø remote industrial remote control, remote sensing
- Ø garage control
- Ø wireless pager
- Ø lighting control
- Ø smart metering
- Ø remote control
- Ø family security and alarm
- Ø garage door openers
- Ø remote keyless entry
- Ø automation
- Ø industrial control
- Ø sensor network

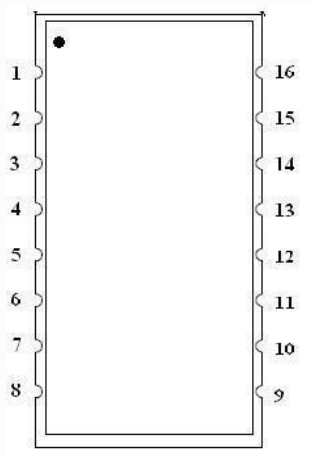
### 4, Shape



## Machine size:

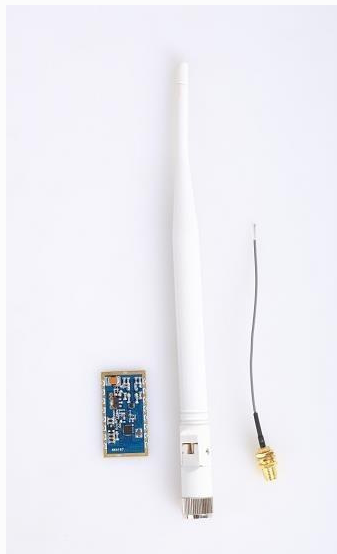


## 4.3: Pin Definition:



Pin NO.	Name	Description
1	VCC	Connect positive power 8VDC
2	GND	Connect power ground
3	+3.3V	inner LDO output Connect the IC of GPIO0(can be used to test sensitivity)
4	GPIO0	
5	GPIO1	Connect the IC of GPIO1(can be used to test sensitivity) Serial clock input. 0~VDDV digital input. This pin has 4 line serial
6	SCK	digital clock function. 0 ~ VDDV digital output, provides serial read back function of internal
7	SDO	control register Serial data input
8	SDI	0 ~ VDDV digital input The pin is 4 line serial data bus serial data flow. Connect power ground
9	GND	
10	nSEL	Serial interface select input pin, 0 ~ VDDV digital input. This pin provides four wire serial data bus selection/enabling functions, this signal is used to represent a read/write mode Interrupt output pin, interrupt produce output low level
11	nIRQ	Close input pin. 0~VDDV digital input. All mode is SCN=0, except in
12	SDN	off mode. When the SDN = 1 chip will be completely shut down and the contents of the registers will be lost.
13	NC	
14	NC	
15	GND	Connect power ground
16	ANT	Connect 50 euro coaxial antenna

## 5, Antenna



## 6, Testing condition:

Weather: bad

Environment: between the bridge on the river

Testing transmitter module: EL1663B\_PA\_1W

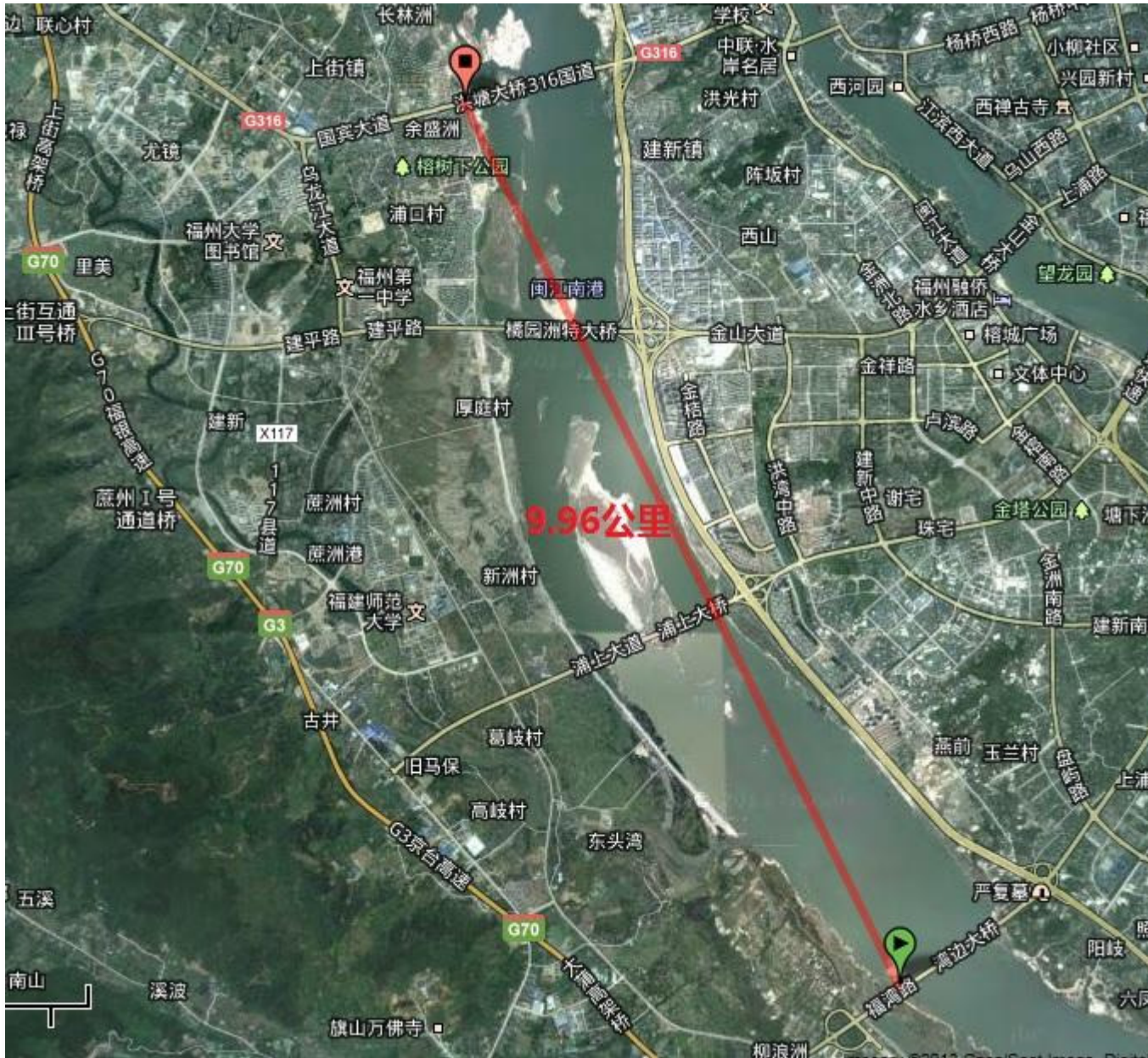
Testing receiver module: SI4463 双天线

Testing frequency: 434MH testing air rate: 2.4K, frequency deviation 4.8K

Testing weather: cloudy with light rain

Testing temperature: 18 degrees

Wind intensity: Strong



Email: [sales@exlene.com](mailto:sales@exlene.com)