

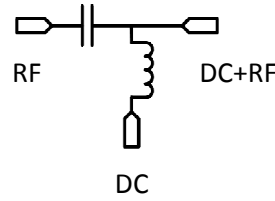
50Ω Broadband Bias-Tee 10 MHz to 18 GHz 1.2A 16V DC

Case PN: GUDD2W6S1A2

Features:

- Broadband Performance 10 MHz to 18 GHz
- Use resonance-free conical inductor
- DC Current: 1.2A, DC Voltage: 16V

Electrical Schematic



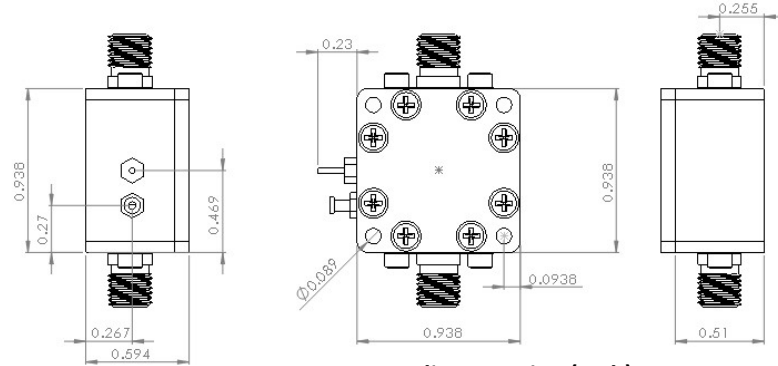
Applications:

- Biasing Amplifiers/RF Circuits
- Biasing Lasers
- Modulators driven with high frequency data patterns

Outline Drawing (inch)

Electrical Specifications:

Item	Parameter	Min	Max	Units
1	Operational Frequency Range	10	18000	MHz
2	DC Current		1200	mA
3	DC Voltage		16	V



Outline Drawing (Inch)

S-Parameters

