

Teensy 4.0 Breakout

(Revision A, Standard)

This is a breakout for the **Teensy 4.0** development board by **PJRC**. Included are all the pin headers you need to assemble it, a switch to select between USB or external power, a switch to select between USB host or device mode, machine screws and standoffs for mounting, a coin cell battery holder, a USB-A jack, and a sleep button. This breakout can also optionally be assembled with the **Teensy 4.0 Socket Kit** which is available separately. Scored carrier rails provide additional versatility and mounting options. The rails can optionally be removed for use with a breadboard.

Contact Info

Name — Daniel Gilbert
Website — tall-dog.com
Email — dan@tall-dog.com

Included Parts (visual part identification sheet attached)

	Qty.	Part Type	Pins	Rows	Tech.	Mfr.	Part Number / Desc.
A	1	Pre-assembled PCB	56	2 × 28	TH	Tall Dog	TD-T40B-A4
B	1	Flex Cable	8	1 × 8	SMD	Tall Dog	TD-T40F-A2
C	3	Male Pin Header	40	1 × 40	TH	Generic	Standard
D	1	Male Pin Header	10	2 × 5	SMD	Generic	Standard
E	1	Male Pin Header	4	2 × 2	TH	Generic	Standard
F	2	Slide Switch	3	1 × 3	TH	Generic	SS12D00G3
G	2	Jumper / Shunt	2	1 × 2	N/A	Generic	Standard
H	4	Machine Screw	N/A	N/A	N/A	Generic	M2 × 4 mm
I	4	Female Standoff	N/A	N/A	N/A	Generic	M2 × 6 mm
J	1	USB-A Jack	4	1 × 4	TH	Generic	Standard
K	1	Battery Holder	2	1 × 2	SMD	Generic	∅ 12 mm
L	1	Coin Cell Battery	N/A	N/A	N/A	Generic	CR1220
M	9	4.7 kΩ Resistor	2	1 × 2	SMD	Generic	0805

Pre-assembled Parts (these are already soldered to the board)

Ref.	Qty.	Part Type	Pins	Rows	Tech.	Mfr.	Part Number / Desc.
N/A	1	FPC Connector	8	1 × 8	SMD	Generic	1.0 mm Pitch
N/A	1	Micro SD Socket	8	1 × 8	SMD	Molex	1051620001
N/A	1	Tactile Button	2	1 × 2	SMD	Generic	4 × 3 mm
R1*	1	120 Ω Resistor	2	1 × 2	SMD	Generic	0805
C1 C5	2	100 μF Capacitor	2	1 × 2	SMD	Generic	1206
C2* C3*	2	0.1 μF Capacitor	2	1 × 2	SMD	Generic	0805
C4	1	2.2 μF Capacitor	2	1 × 2	SMD	Generic	0805
U1*	1	CAN Bus Transceiver	8	2 × 4	SMD	Microchip	MCP2558FD
U2	1	Current Limit Switch	8	2 × 4	SMD	Texas Instruments	TPS2055A

*These 4 components are only populated on the **CAN Bus** version of the board.

Variants

Unlike previous Teensy breakouts, this board comes partially pre-soldered with a number of surface-mount components to make assembly easier. There are two pre-assembled variants: one which includes a CAN Bus transceiver (Microchip MCP2558FD) and its supporting passives, and one which leaves these components depopulated, for those who don't require CAN Bus support and want to use the associated pins for other purposes. If you're not sure, choose the one without the CAN Bus parts.

Detailed Specs (not including carrier rails)

- **Grid Spacing** — 0.1" / 2.54 mm
- **Board Dimensions** — 2.8" × 1.0" / 71.12 mm × 25.4 mm
- **Board Surface Area** — 2.8 in² / 18.06 cm²
- **Board Thickness** — 0.063" / 1.6 mm
- **Number of Breakout Pins** — 56 pins (2 rows × 28 pins)
- **Row Spacing** — 0.9" / 22.86 mm

Recommended Tools

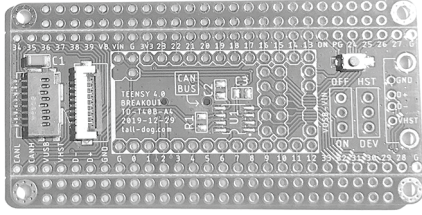
- Soldering iron
- Solder and flux
- Breadboard
- Diagonal cutters
- Blue tape
- Razor blade
- PCB holder

Assembly Instructions

Please visit this website for step-by-step assembly instructions:

<https://talldog.dozuki.com>

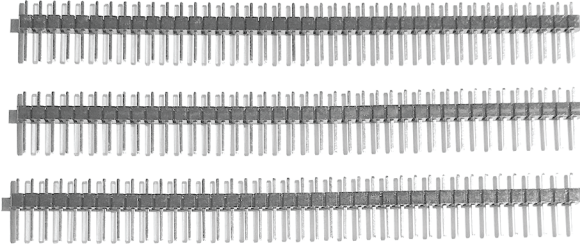
A



B



C



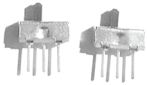
D



E



F



G



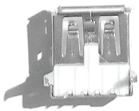
H



I



J



K

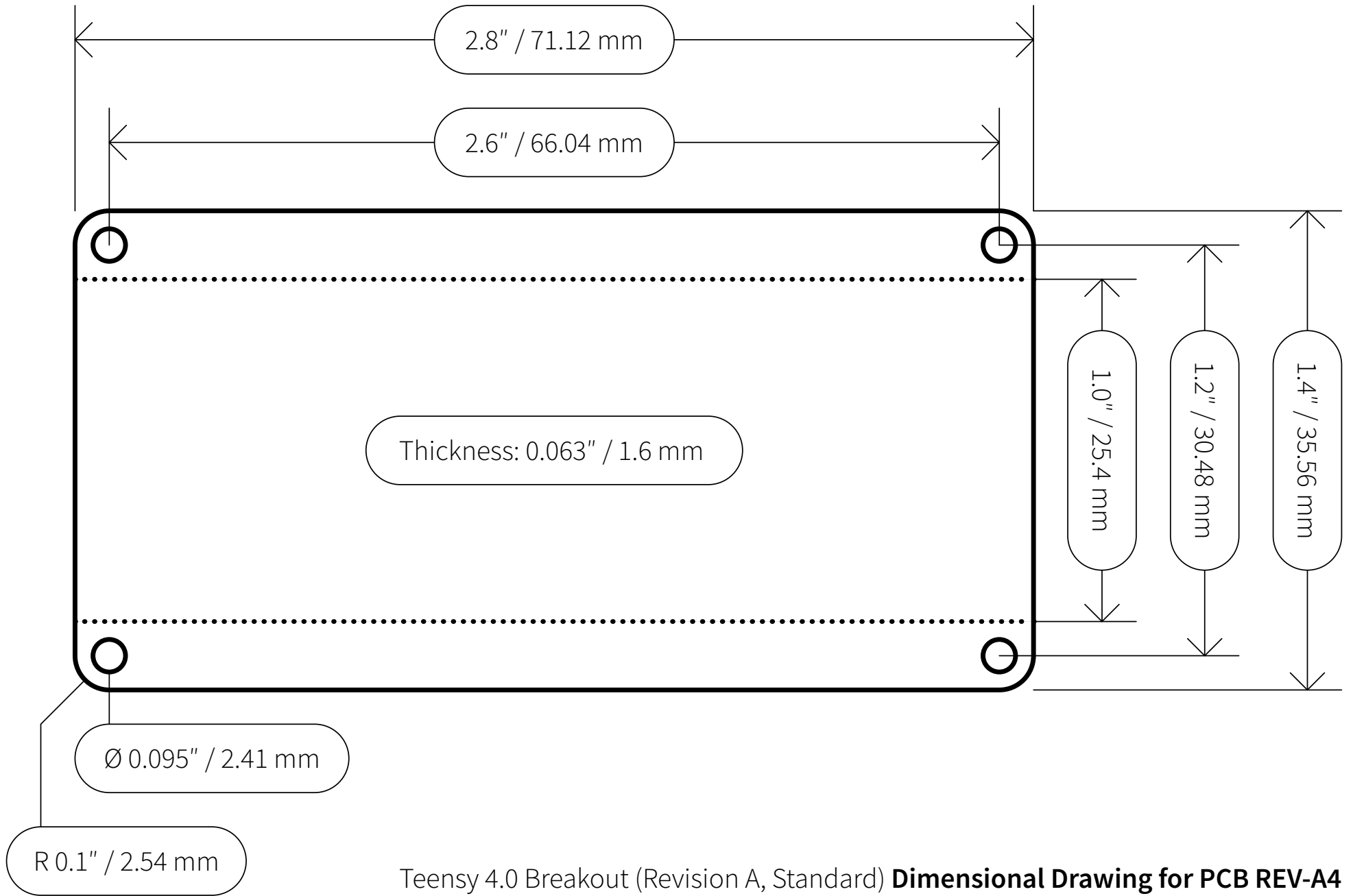


L



M

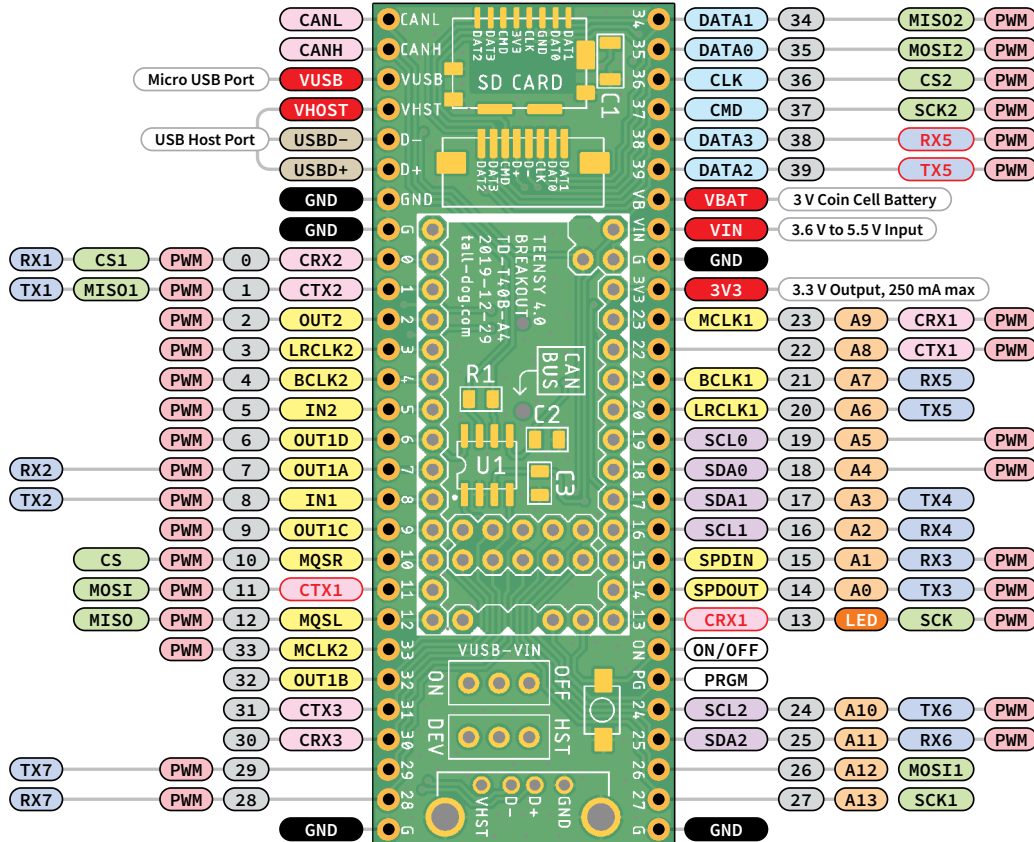




Teensy 4.0 Breakout (Revision A, Standard) **Dimensional Drawing for PCB REV-A4**

Tesny 4.0 Breakout Standard Edition

Revision **A4**



Teasy 4.0 by PJRC
pjrc.com

Breakout by Tall Dog
tall-dog.com



Legend

- Voltage Pins
- Ground Pins
- Digital Pins 40
- Analog Pins 14
- PWM Pins 31
- Audio Ports 3
- Serial Ports 7
- I2C Ports 3
- SPI Ports 3
- CAN Bus Ports 3
- SD Card Port 1
- USB Host Port 1
- Alternate Functions