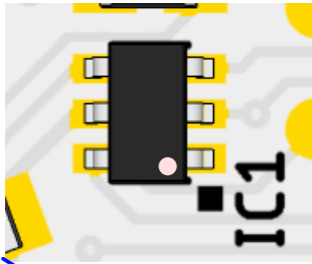
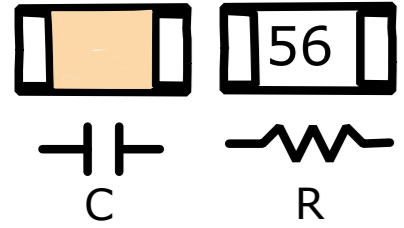


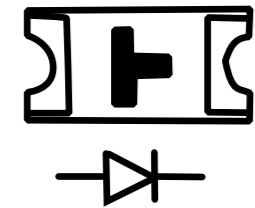
Align IC1 pin 1 mark



Solder in order:
IC1,C1,R1,R2 & R3.



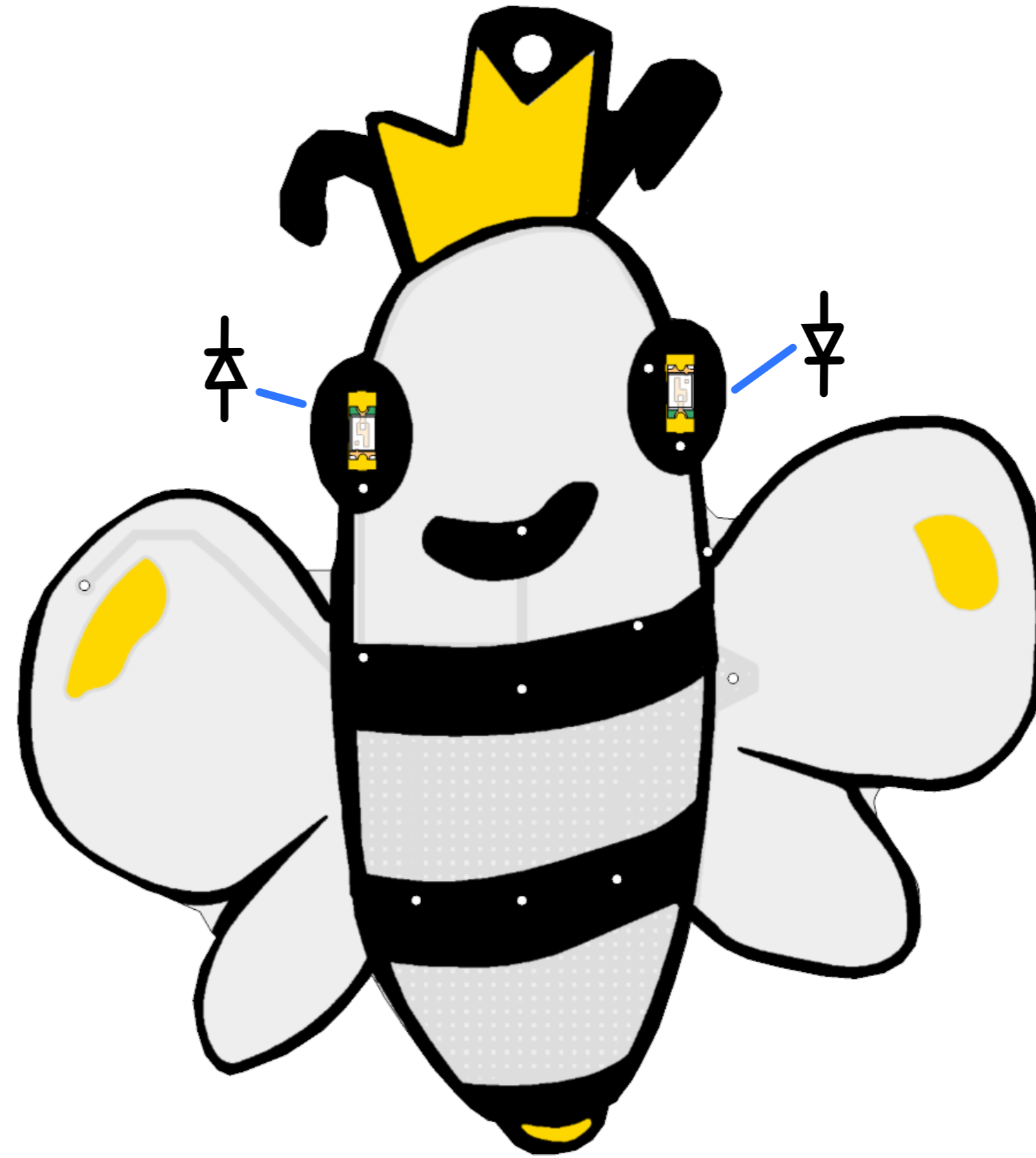
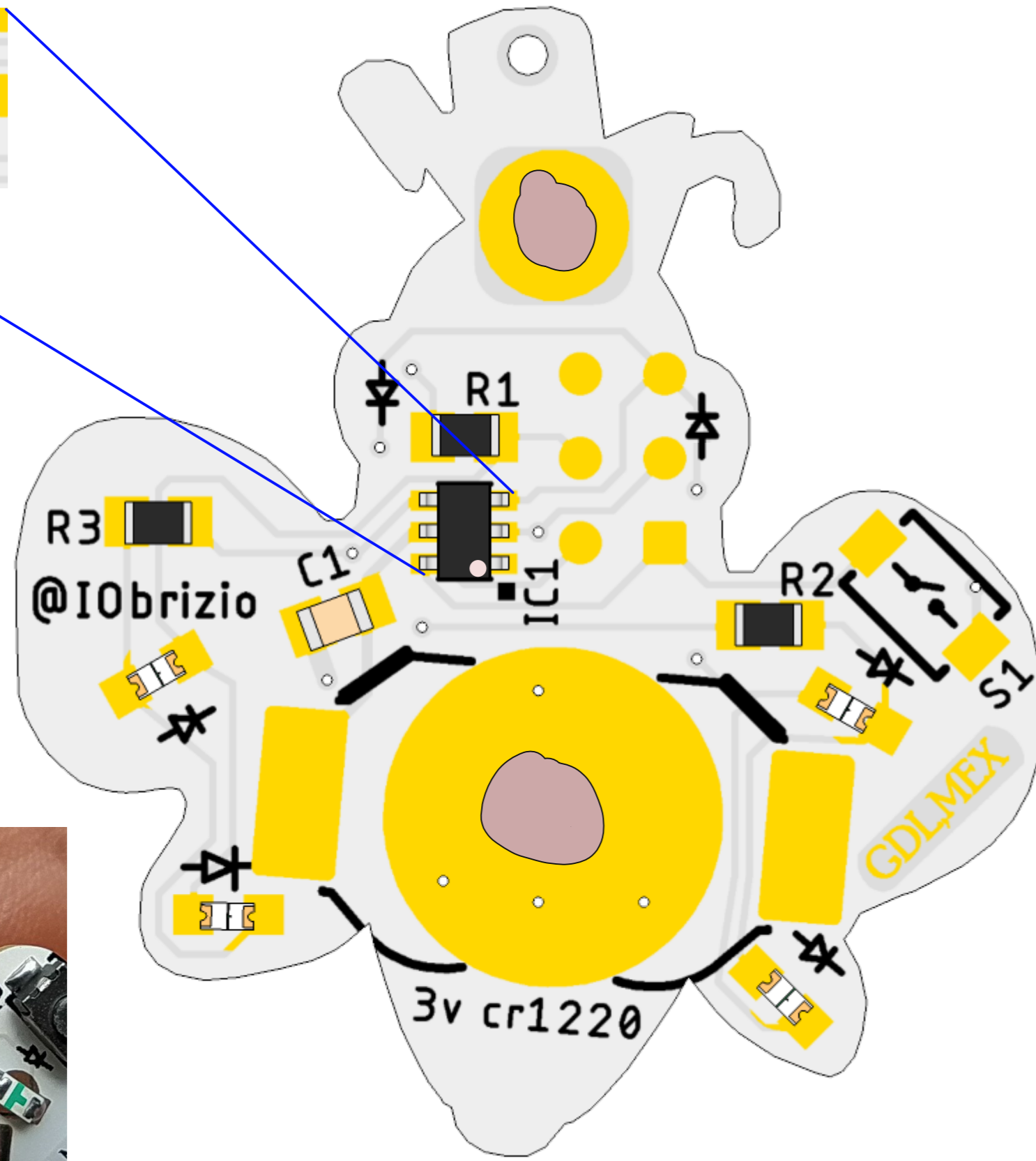
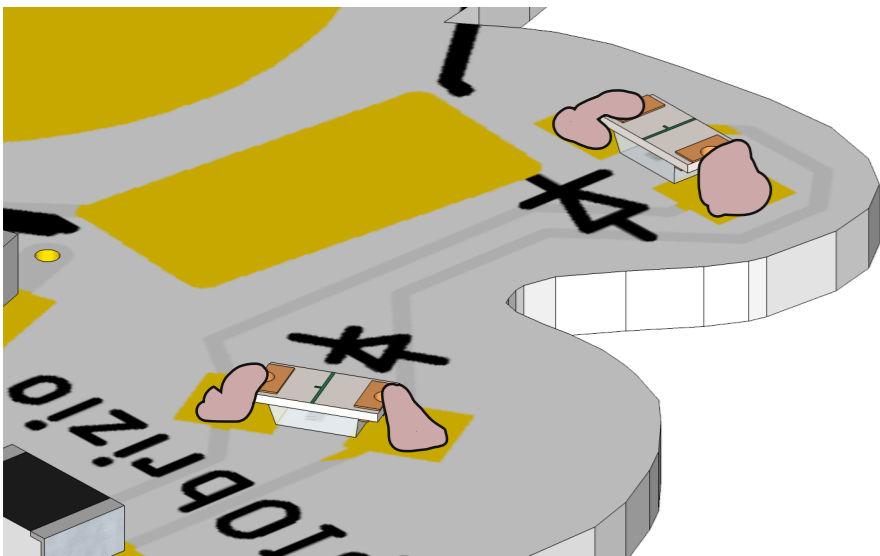
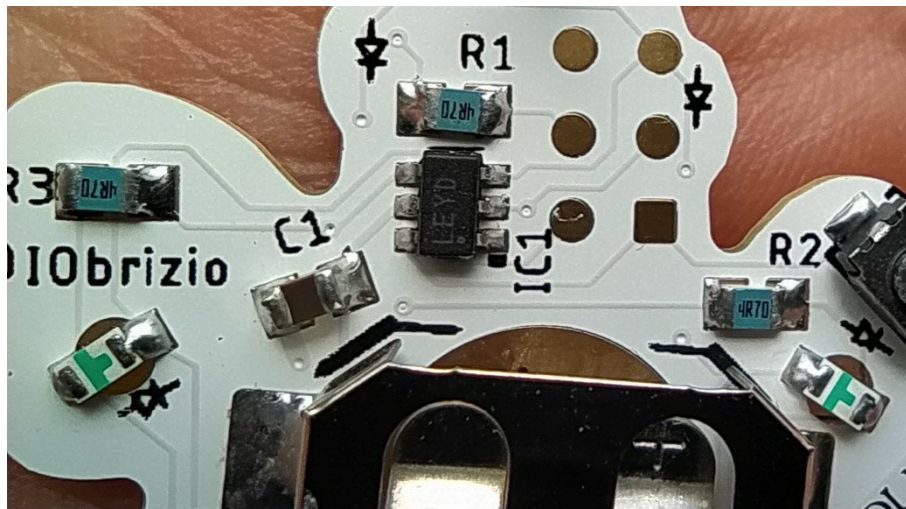
Check LED polarity



Flip LED to solder reversed.

Solder the 4 LEDs on backside.

It's a bit tricky but add small solder to ease soldering.



Flip the board

Check LED polarity & solder YELIOW LEDs

****USE this as Reference
Soldermask has not been updated**

Solder push button S1

Add small blob of solder to
pin pad and battery pad.

Place battery holder & solder
Place pin & solder