



Gibson Les Paul wiring circuit

Installation Manual

Here the list of operation to be done to install the Gibson Les Paul wiring circuit:

- 1) If present, remove all nuts from pot shaft.
- 2) Insert in every pot the knurled washer.

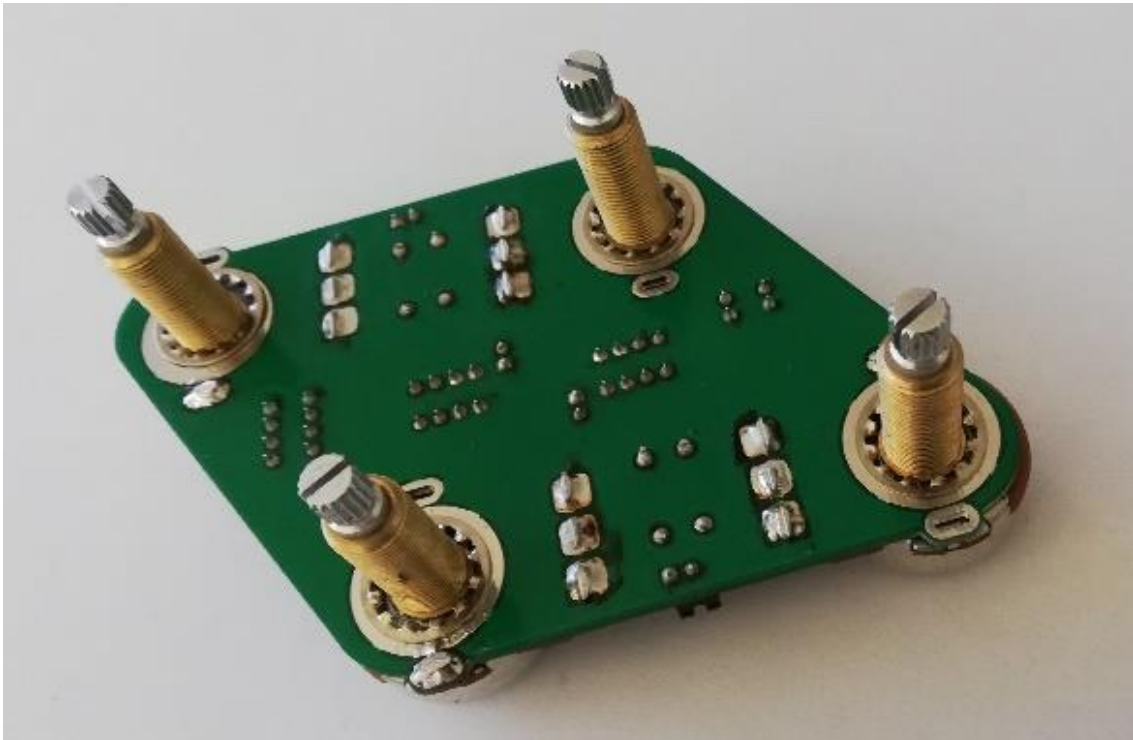


Figure 1

- 3) Place the circuit with the jack connector close to the jack socket hole of the guitar.

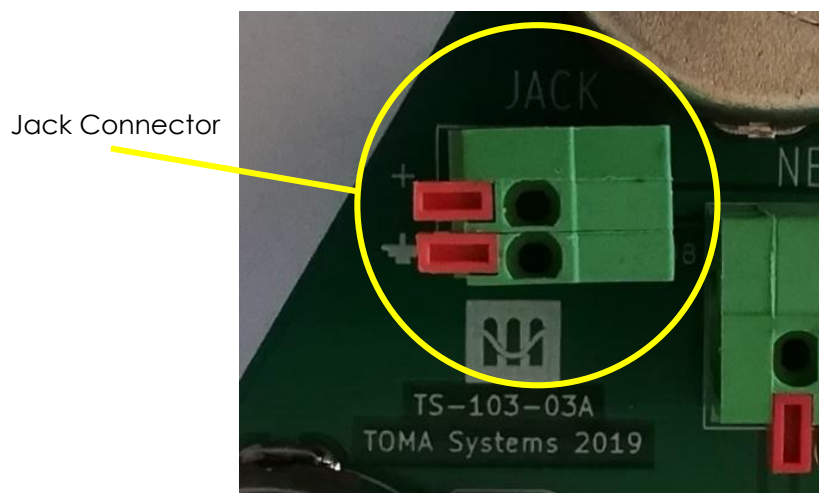


Figure 2

- 4) If the circuit doesn't fit perfectly, please use a Dremel router with a small drum sander to enlarge guitar top holes.
- 5) For every pot there will be two washers and two nuts.



Use these on the guitar top to fix the circuit.

Figure 3

- 6) If one of the pot is too high on top you can use the second washer or the second nut on the shaft to regulate the height.

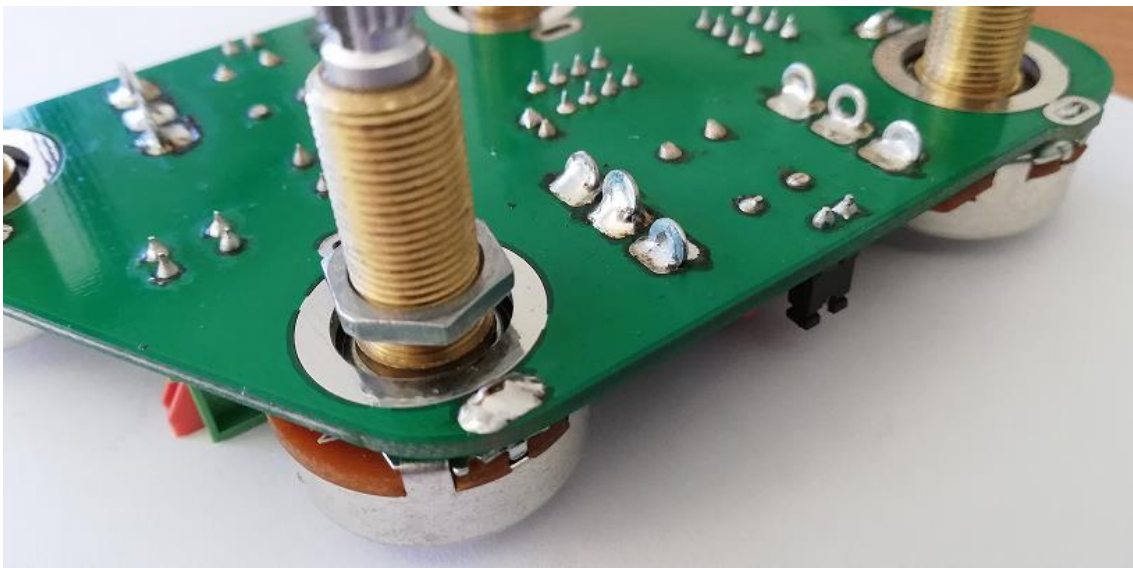


Figure 4

- 7) When the circuit is in place and fixed you can start cabling. Please ensure to have a small flat screw driver.
- 8) Strip the cable end and with the flat screw driver press the orange button. Then insert the cable deep in the hole. Release the button and check if the cable is stable.

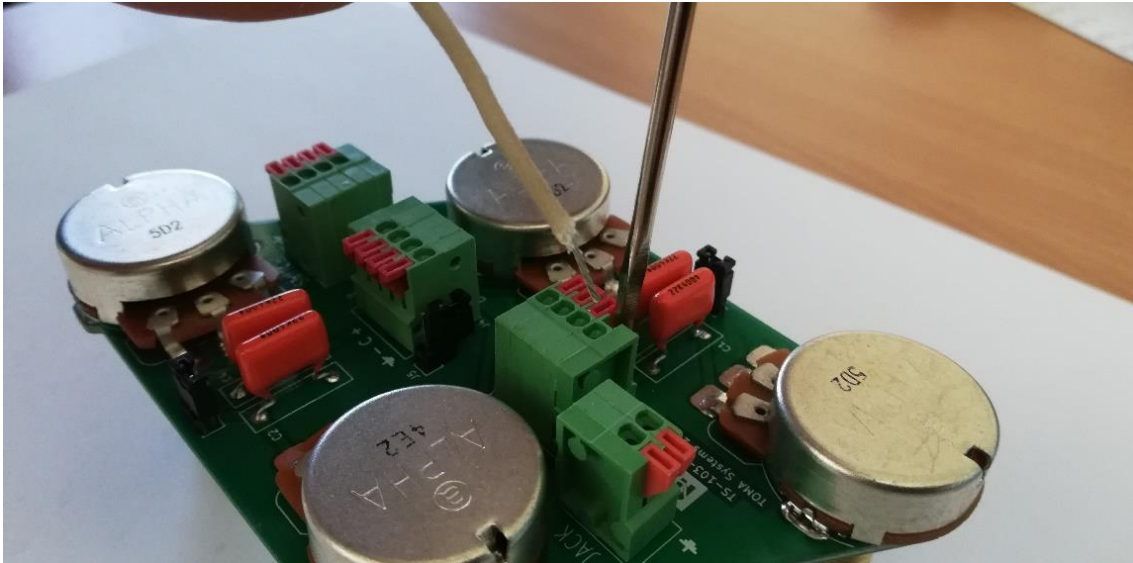


Figure 5

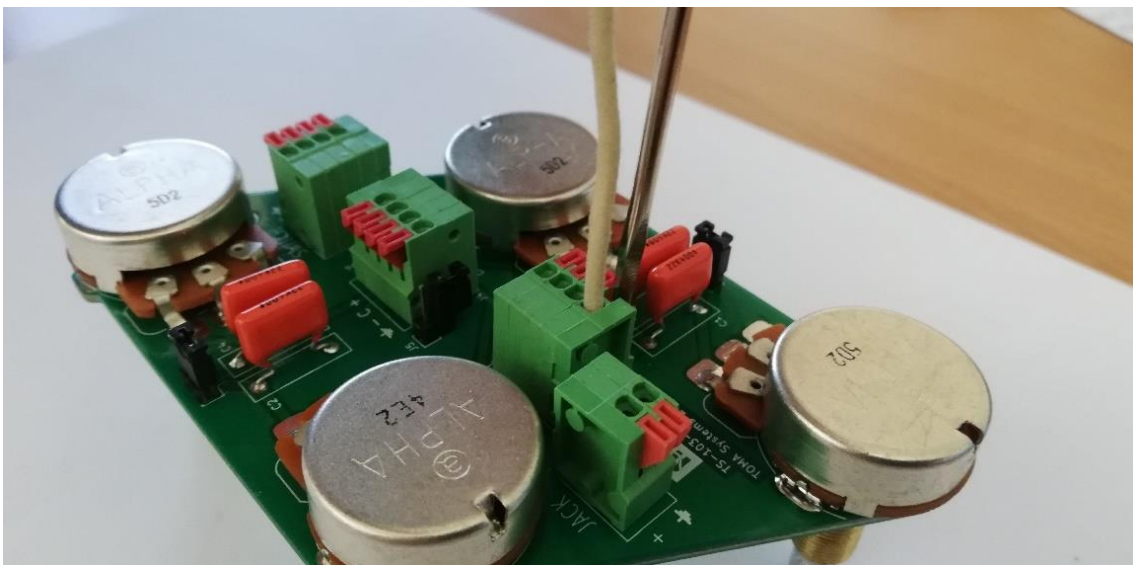


Figure 6

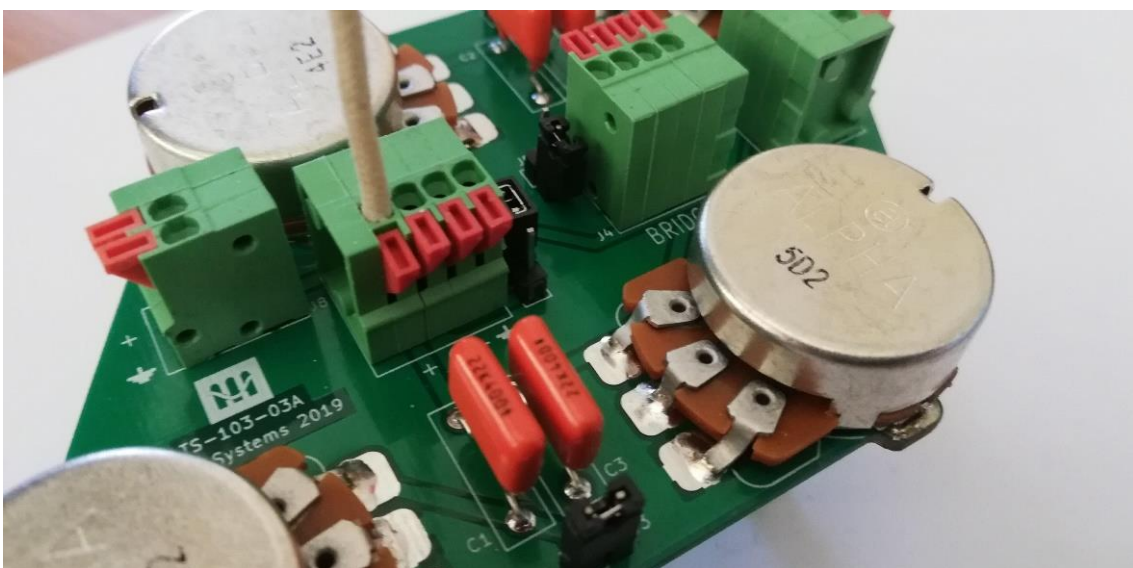


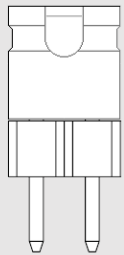
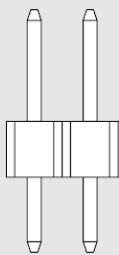
Figure 7

9) Here is a table with the most common pickups color code:

	Hot (+)	Coil join (C)	Gnd (-)
Seymour Duncan	Black	Red and white	Green
Gibson	Red	White and Green	Black
Di Marzio	Red	Black and White	Green
Fender	Green	White and Black	Red
EMG Passive	Red	Black and White	Green
Bare Knuckle	Red	White and Green	Black
Tonerider	Red	Black and White	Green

10) Now is a good moment to test the guitar: connect it to your amplifier and check if all connections are done in the right way. If all is ok, proceed to next steps; if not, check again connections made at step n°8, checking both cable stability and color order.

11) At this point you can have fun with the jumper selectors and try different configurations.

	 ON	 OFF
J2	Neck Coil Mode = Single	Neck Coil Mode = Double
J3	Neck Tone Capacitor = 0.044μF	Neck Tone Capacitor = 0.022μF
J5	Bridge Coil Mode = Single	Bridge Coil Mode = Double
J6	Bridge Tone Capacitor = 0.044μF	Bridge Tone Capacitor = 0.022μF

12) Once done, you can put on the knobs, **pushing gently** on the potentiometers and being aware to not push more than necessary: an excessive force can break the pot shaft.

13) Now you have a renewed wiring on you Les Paul!

Neck and Bridge Pickup:

+ = Hot

C = coil join

- = Gnd

Gnd = Shield

When J1 is OFF coils will be in series

When J1 is ON C, - and Gnd will be shorted so only one coil will play

To toggle switch:

Neck

Central

Bridge

Ground

J3 ON = 0.044 μ F

J3 OFF = 0.022 μ F

Guitar TOP VIEW

