



INSTRUCTION FOR SETTING UP SWITCHCRAFT

For maximum success rate while setting up your Switchcraft WiFi Button you can prepare following:

- 2 x AAA batteries;
- Pin for clicking the Setup Button;
- Prepare your HTTP GET or POST request;
- Have your phone nearby;
- Test that you can connect to your WiFi AP and that you can access internet.

Setup:

1) Prepare your HTTP request:

a. To feed request to the Switchcraft WiFi Button it needs to be formatted. Here's an example how to format Thingspeak request for Switchcraft:

i. Input:

1. Host: api.thingspeak.com;
2. Port: 80;
3. API: /update?key={YourPrivateKey}&field1={value}
4. {value} is hardcoded to be battery voltage level. {value} is always appended to the request;
5. {YourPrivateKey} is the key you get when you create a channel on Thingspeak.

ii. Formatted for Switchcraft:

1. GET api.thingspeak.com:80/update?key={YourPrivateKey} &field1=
2. This will update battery voltage level to field1 on thingspeak channel specified by {YourPrivateKey}.

iii. You can also update many parameters on Thingspeak. See following example:

1. GET api.thingspeak.com:80/update?key={YourPrivateKey} &field1=0&field2=

2. On channel {YourPrivateKey}, field one receives „0“ and field2 gets battery voltage level.

Note: If your formatted string ends with “=”, battery voltage level will be added automatically. In case you don’t add “=”, it will not be added to the request string.

- 2) Insert 2 x AAA batteries. In order to access the battery holder, remove the lid by carefully pulling the top and bottom parts apart.
- 3) Take your phone close by.
- 4) Locate the setup button on top side of the button

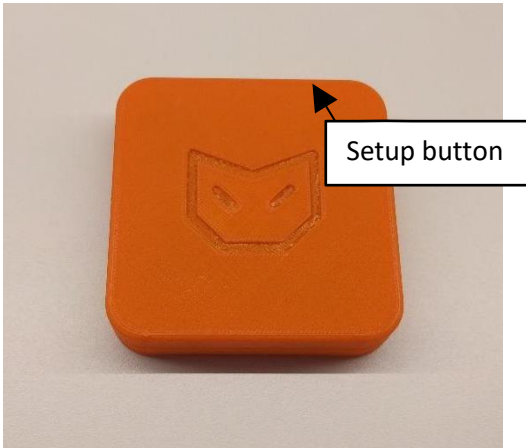


Image 1. Switchcraft top view

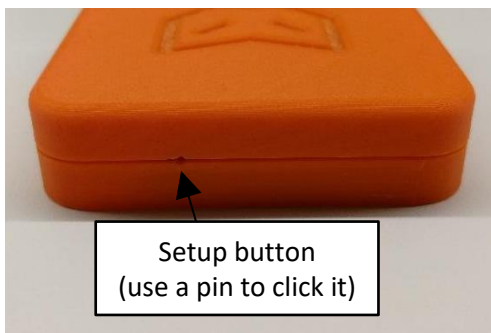


Image 2. Switchcraft top side view

- 5) Push THE BUTTON and release, and then immediately push and hold SETUP button for 4 seconds. Red led on top right corner will blink twice to indicate setup mode.

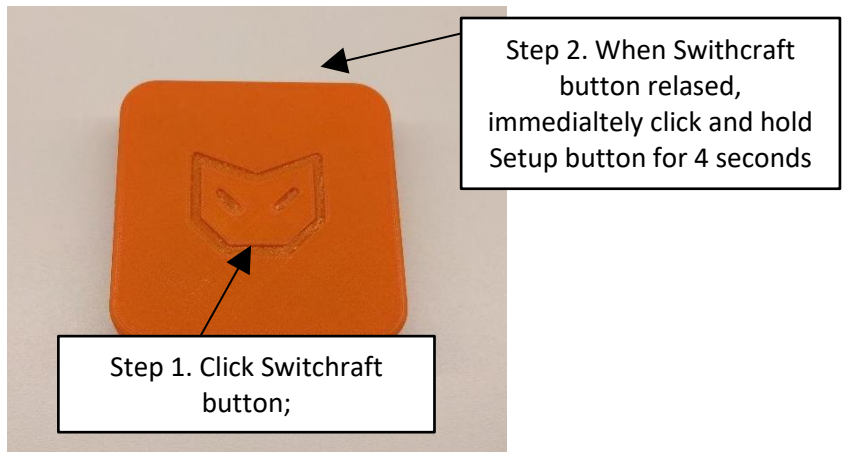


Image 3. Initiating setup mode

- 6) Scan for WiFi access points on your phone. You should see access point called NewButton. Select NewButton from the list.

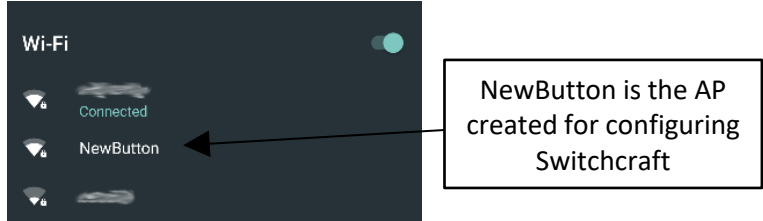


Image 4. NewButton appears under wifi AP list (Android example)

- 7) Connect to NewButton access point. Note! Depending on the maker/model on configuration of your phone you might not get the notification shown below. In that case, when you're connected to "NewButton", type in ip "192.168.4.1" in your browser.

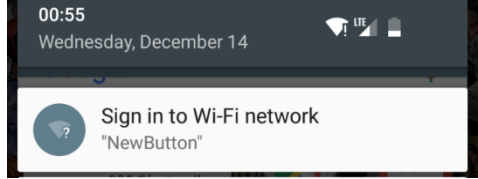


Image 5. Signing in to NewButton to set up Switchcraft

- 8) Password for NewButton: password

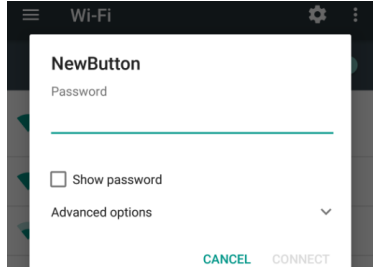


Image 6. Input password for NewButton

9) Click „Configure WiFi“ to input wifi SSID and password.

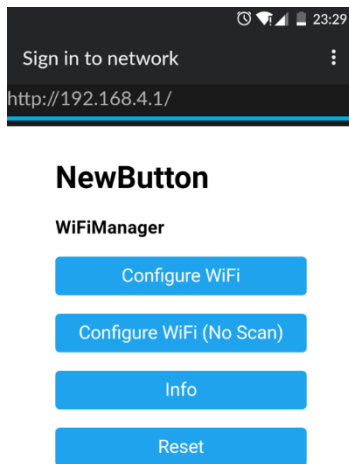


Image 7. Switchcraft configuration menu

10) Selecting your WiFi SSID will fill in SSID input box for you. Next, input your WiFi password. Then push save.

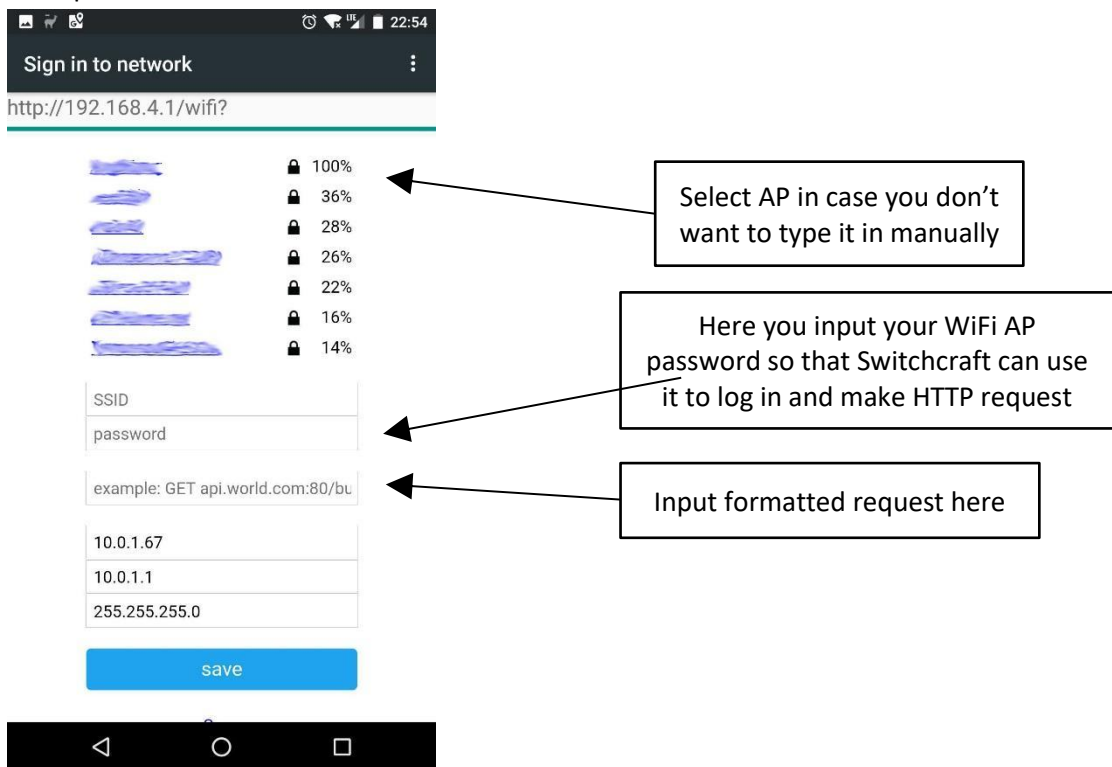


Image 8. Switchcraft configuration menu for inputting WiFi credentials and formatted HTTP request

11) If all steps followed through carefully, Switchcraft should restart and make first request towards API specified by you.

LED indicators:

Red led blinks 2 x	Switchcraft started in setup mode
--------------------	-----------------------------------

Green led blinks 1 x	Switchcraft started in operation mode
Red led blinks 3 x	Failed to connect to host. Check if host is accessible. Check if host can be reached via WiFi AP.
Green led blinks 5 x fast	Switchcraft received confirmation that request is received by server (HTTP/1.1 200 OK).
Red led blinks 5 x	Switchcraft did not receive confirmation from server (HTTP/1.1 200 OK not returned)