

Additional instruction for Nutube NEX/HR completion

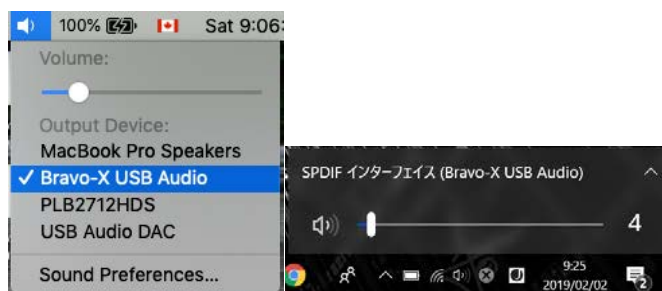
One thing to do for assembling



At the edge of Nutube, you will find white thick double sided tape. After finishing solder all parts, please peel thin transparent vinyl tape and fix PCB to metal enclosure. This can avoid too much micro phonic effect of Nutube.

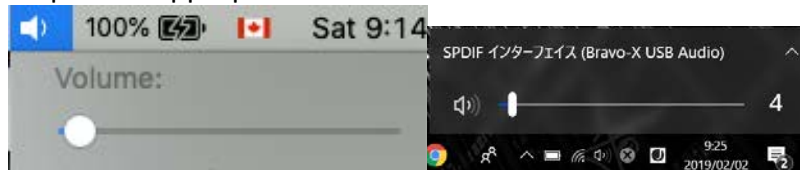
Setting before usage

Step 1: Select audio device in your OS



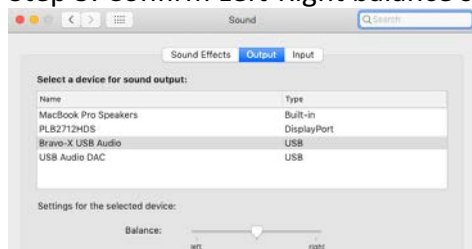
This headphone amplifier will appear as Bravo-X USB audio.

Step 2: Set appropriate audio level



In order to avoid breaking your expensive headphone, please set the audio level very small level (not total off). The actual audio level can be adjusted by application (such as iTunes).

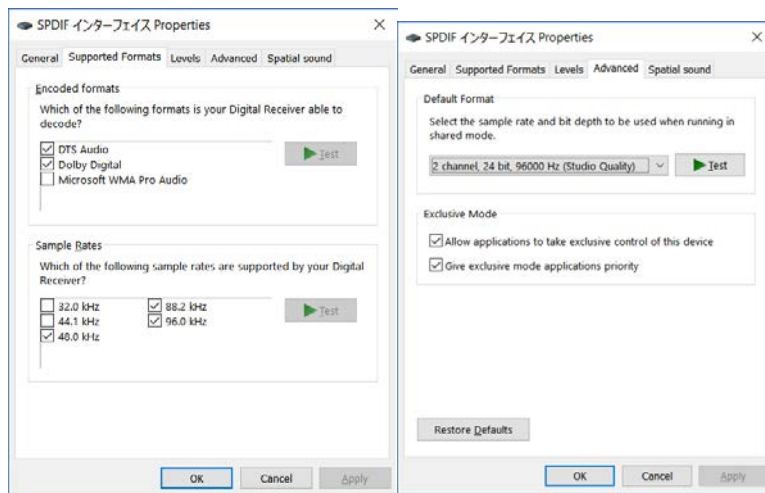
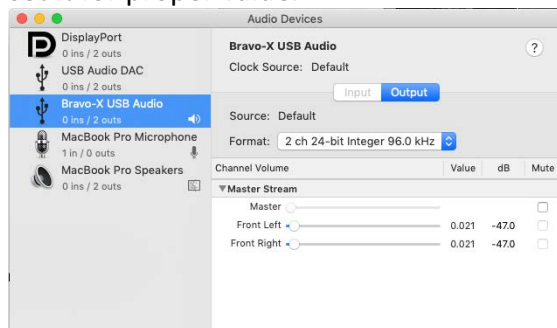
Step 3: Confirm Left-Right balance setting



Sometimes Left/Right setting is deselected for the initial stage. Please confirm it as "center".

Step 4: Set high-resolution mode

In order to show the best performance, please set the output bit resolution and sampling rate for 24 bit/96 kHz. This setting can be found in “Audio MIDI Setup” application in “utility” folder (OSX utility application). For Windows, please find Sound control panel and set it for proper value.



Thank you for ordering!!