

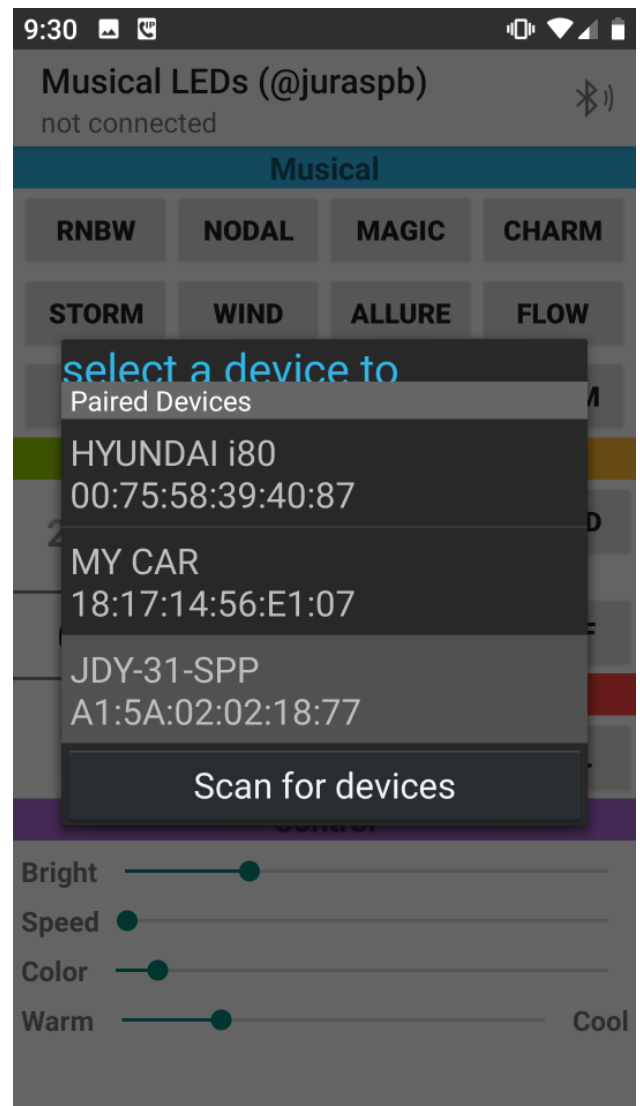
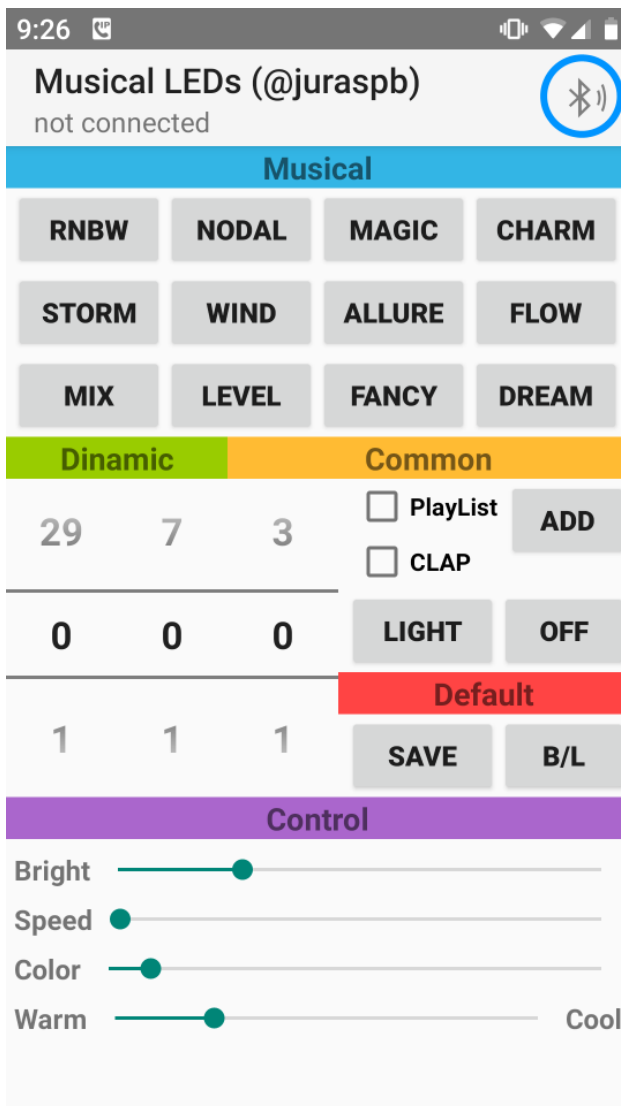
MUSIC LEDs USER MANUAL

Software [MUSIC LEDs](#) is available for Android on Google Play.

Let me kindly recommend you to tune your controller via [the service program](#) due to its simplicity. However, you are always welcome to switch any settings you want from the Android app.

1. Connection to the controller

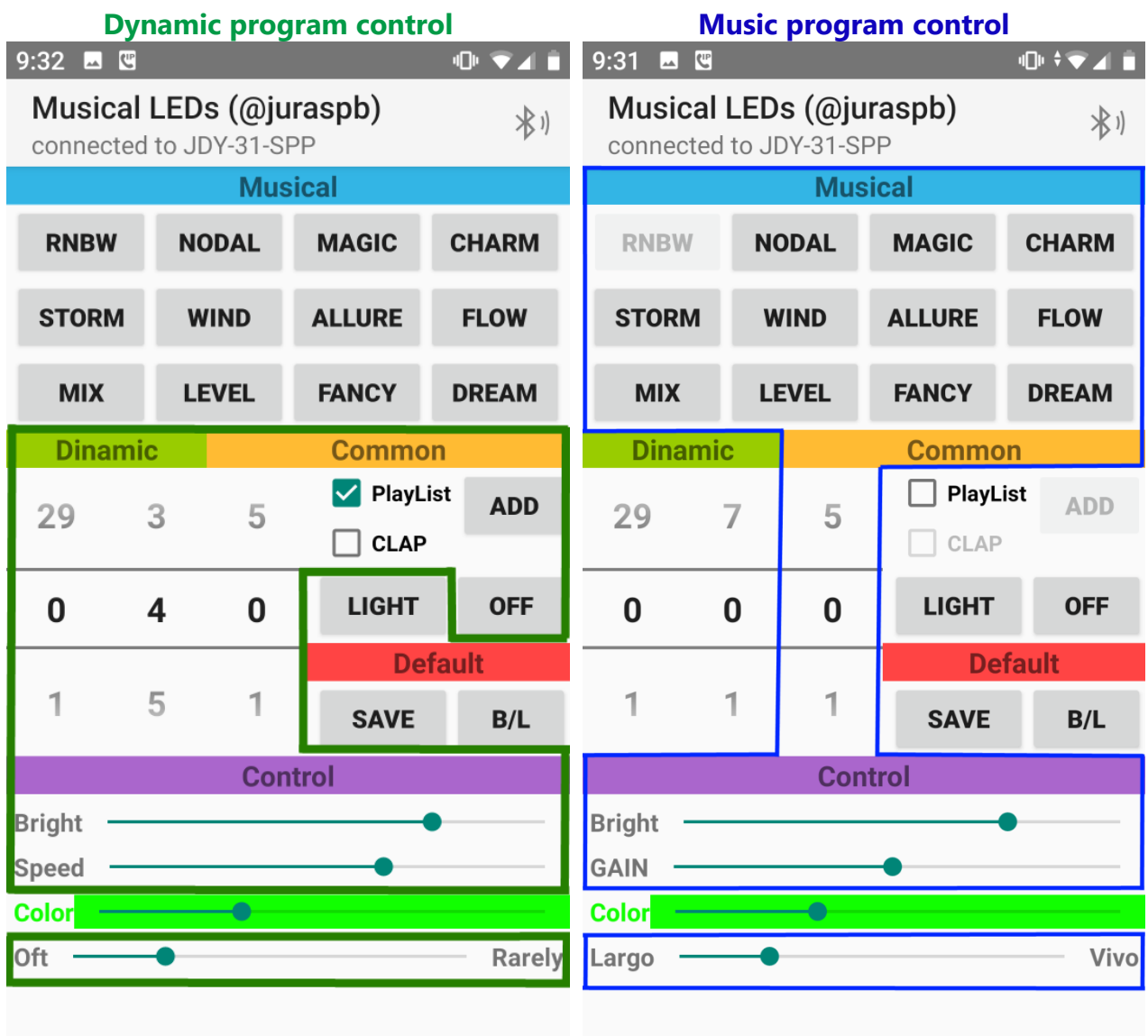
Touch the Bluetooth in the top right corner of the screen of your smartphone. Choose your Bluetooth controller from the list.



Wait for connection.

2. Selecting program, direction (mode), brightness, motion speed

Select music program using buttons in the **Musical** part of the screen, or dynamic program using first two scrolling bars under the **Dynamic** label. Set comfortable brightness, gain, color and motion speed using sliders in the **Settings** part.



You can set the motion direction or performance mode for programs without directed LED light motion (not present in all programs so far) both for music and dynamic programs using the third scrolling bar in the **Dynamic** part of the screen.

3. Creating your own dynamic programs playlist

You can create a list of dynamical programs that will be played in rotation. To do this, consistently select dynamic programs, subprograms, directions (modes), and motion speed, adding programs you like to playlist by hitting the **ADD** button. After you are done, save programs by hitting **SAVE**. Max. number of programs in the list is 80.

Further, you can add programs to playlist at any time by hitting **ADD**. Do not forget to save your new playlist by hitting **SAVE**.

To start playing your playlist check the box **LIST**.

To clear playlist hold the **ADD** button for more than 5 sec.

4. Turning on the white light

You can switch all LEDs to white by hitting **LIGHT**

5. Setting the number of colored LED stripes

You are able to change the number of colored LED strips by quickly hitting the **B/L** button. Do this until the number of stripes becomes as many as your wish. The software supports the following numbers of stripes: five, six, ten, fifteen, eighteen, twenty, and thirty. If the number of LEDs is not multiple of the strip LEDs number, part of the LEDs may remain unused.

6. Setting the number of LEDs in one strip

To change the number of the LEDs to the number that your LED strip contains hold the **B/L** button for more than 5 seconds. Keep going until all the LEDs are involved.

Have a nice time!