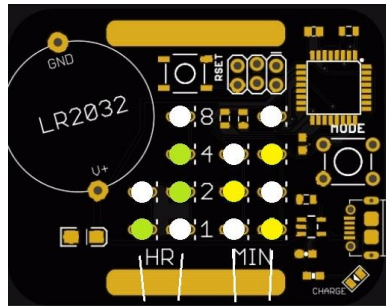


Binary Watch Instructions

1. Reading the Time

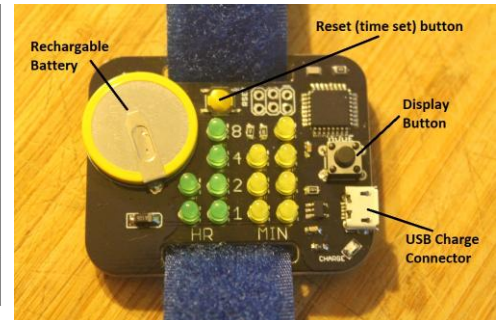
Press the Display button. The time is displayed from the left of the display to the right as a sequence of binary encoded decimal numbers.

The first two columns are the 2 digit representation of the hour. The next 2 represent the minutes.



1 6 : 2 5

The time is 16:25 or 4:25pm



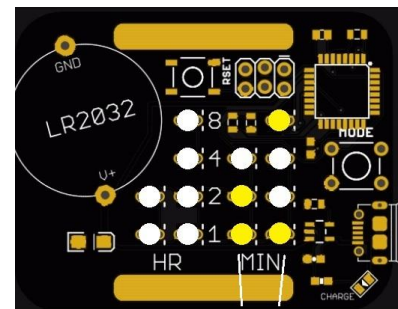
2. Setting the Time

Press the Reset button. The watch will enter time setting mode.

The first column will blink for a few seconds signifying that column is ready to be set. When it stops blinking, press the Display button to advance the value of the digit by 1 for each press. When you reach the desired value, wait a few seconds and the next digit will start to blink. After the blinking stops, set that digit as the first. Continue this process through the minute values. After the 4th column is set, wait a few seconds and the watch will exit set mode and display the current time.

3. Checking the Battery Voltage

Press the Display button. While the time is displayed, press the Display button one more time. The two digits that represent the minutes will now display the approximate battery voltage. The voltage is displayed as a decimal number. The column 3 value is the number, and the column 4 number is the decimal.



3 . 9

Battery voltage is 3.9 Volts

4. Charging the Battery

Charge the watch via the USB port with any standard phone charger or micro USB cable hooked to a USB port. The battery voltage should range from about 4.2V when fully charged to about 3.3V when it needs to be recharged.