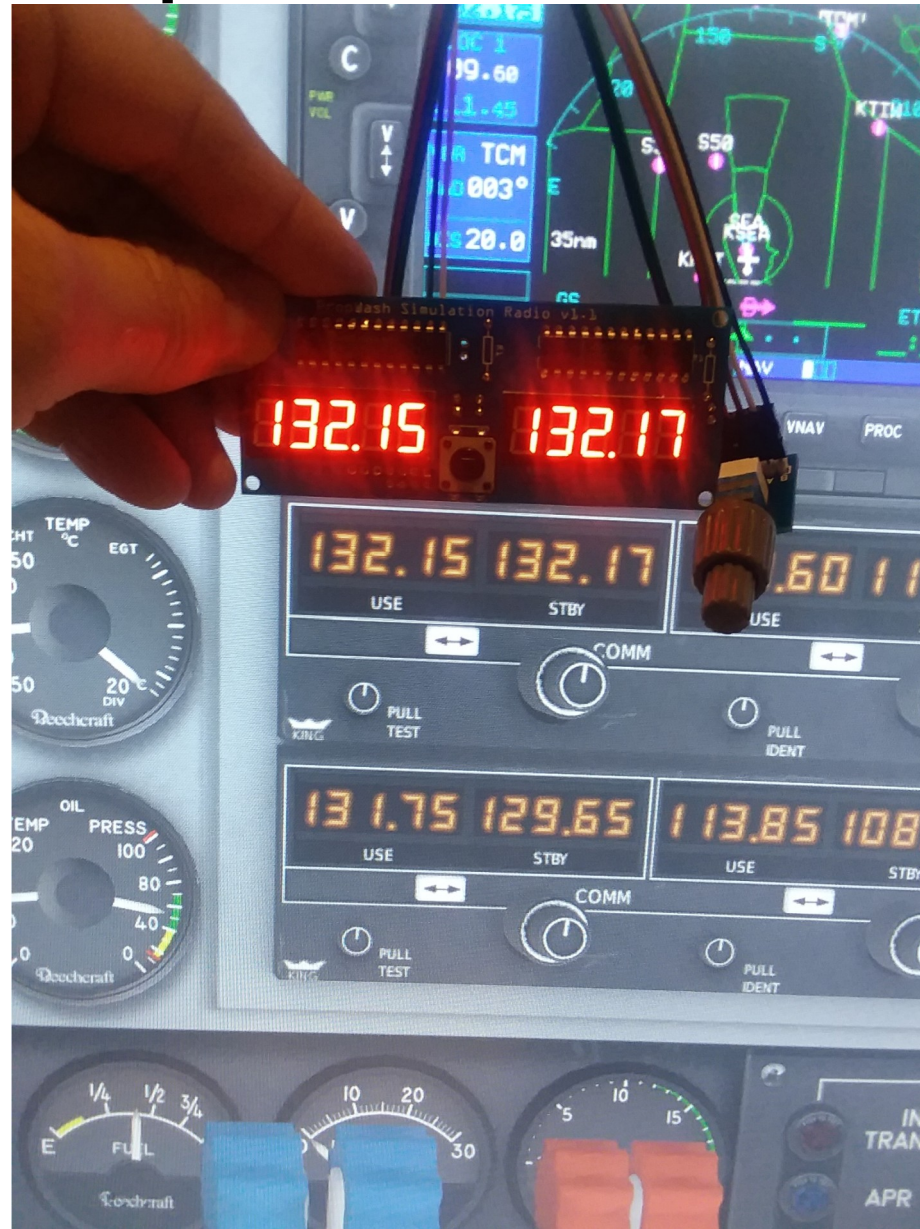


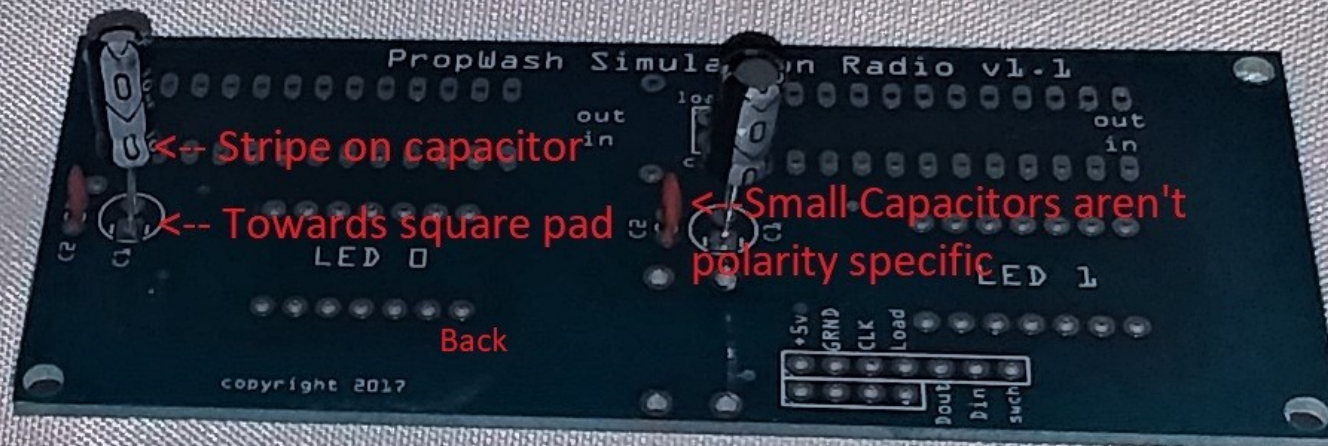
Single Radio Panel Assembly

PropWashSim.com



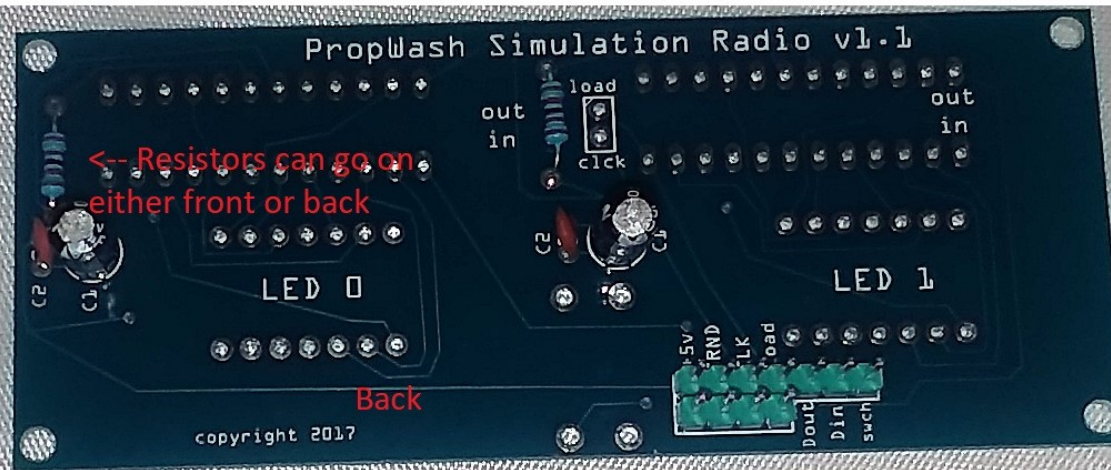
Step 1

10uf Capacitors (larger capacitors) must be mounted by polarity as indicated below



Step 2

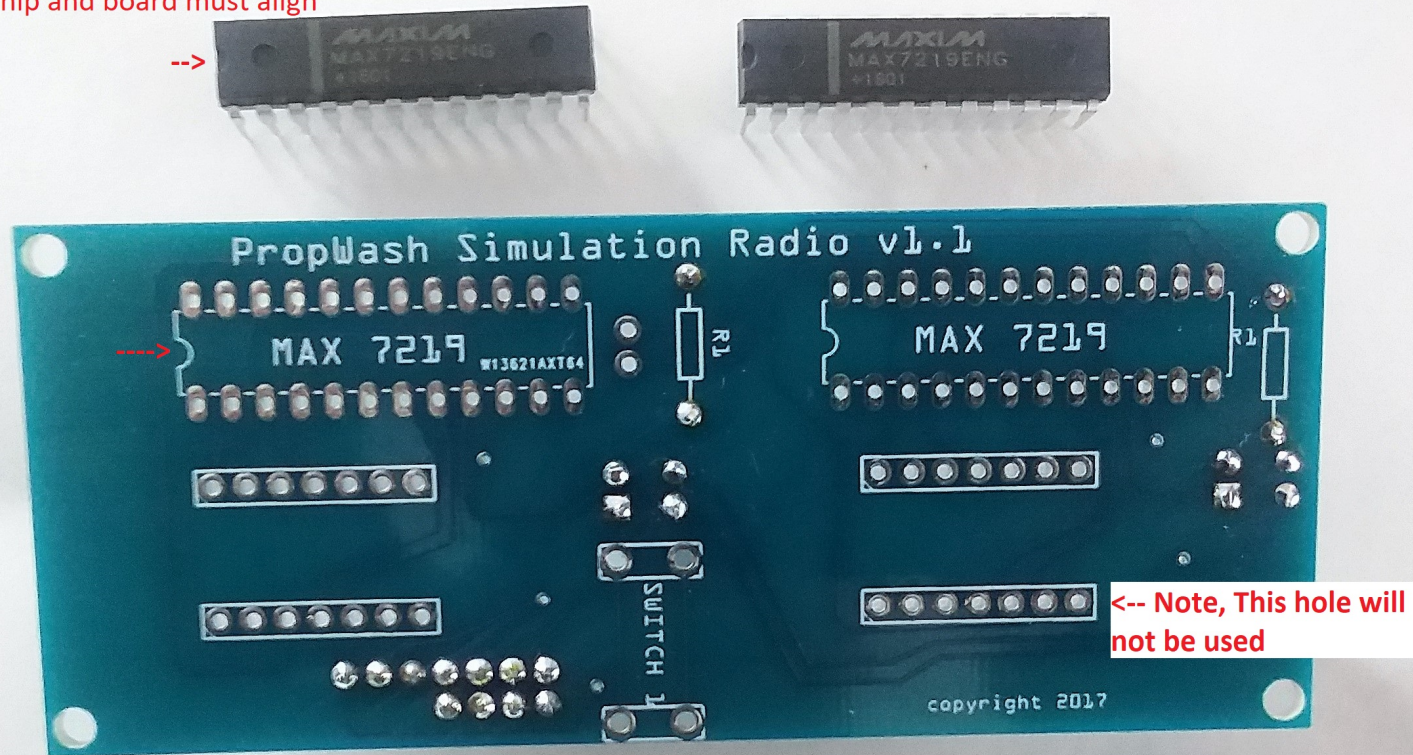
Mount the 4 capacitors, Headers and Resistors first. Capacitors and Headers must be mounted on the "Back" side. Resistors can be mounted on either side



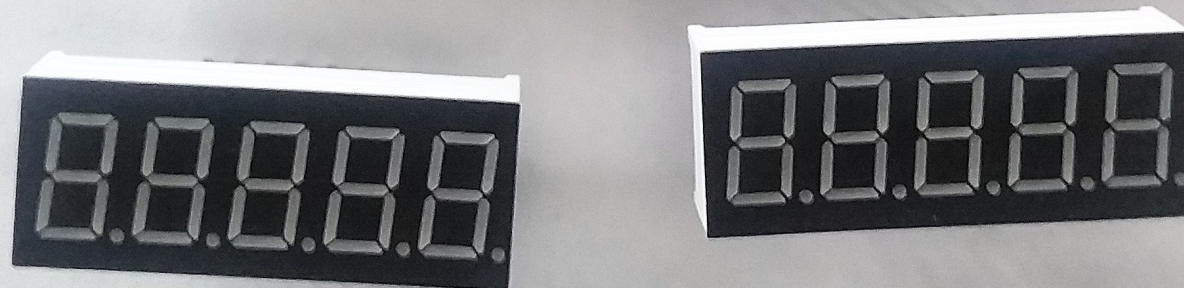
Step 3

Finally, Solder the 2 Max7219 chips in place (pins are a very tight fit and may need to be slightly and carefully bent inwards). Solder in the LED's in the direction shown.

Notches on chip and board must align



Dots (periods) on the LED's must be on the lower side as shown



Step 4

