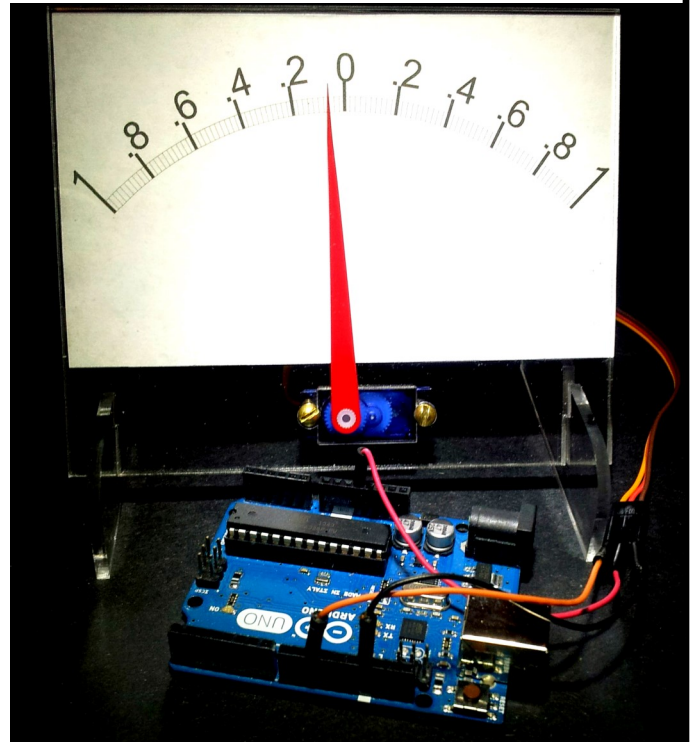


ServoGauge Proto

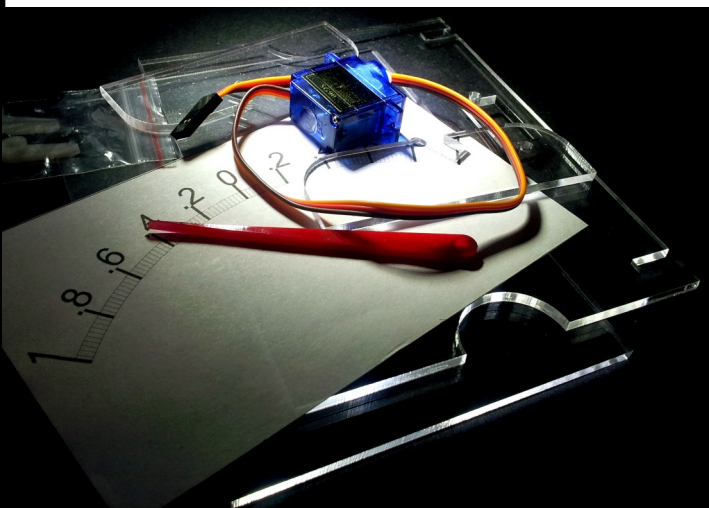
Simple Customizable Gauge for your projects.

- Works with Arduino
- Any micro with PWM output
- Print your own custom scales
- Uses one digital output pin
- Arduino analogWrite
- No external libraries required
- Looks great for show-and-tells



Shown connected to a standard Arduino with three breadboard jumper wires. Red for +5, black for ground, and orange is the PWM signal. That's it, a single digital output is all you need for a gauge.

Custom scales can include icons and graphics, you are not limited to just a range of numbers. Could have a "Low Batt" or "Offline" icon that the needle swings to. Maybe your friends faces to show which one you need to call back.



Kit Includes:

- Laser cut clear acrylic for front and back.
- Laser cut clear acrylic stands, slip/notch fit.
- Laser cut gauge pointer, red acrylic.
- Micro Servo with it's packaged hardware
- Two servo mounting screws
- Sample printed scales.

Find example projects at <http://www.uchobby.com>. Order the ServoGauge Proto at Tindie.

ServoGauge Proto is an open source design. Source files are available on GIT Hub under the uChobby account name.

Distributor and resale inquires should be directed to info@uChobby.com.