

Resistors 1/4W, 5%

- 330Ω - R1
- 3.3k - R2
- 4.7k - R3
- 5.6k - R4
- 8.2k - R5
- 10k - R6, R7, R8, R9, R10
- 15k - R11
- 18k - R12
- 1M - R13

Diodes: Total: 13

- 1N4148 - D3

5mm Multi-color LED - D1, D2



Capacitors: Total: 3

560pF Ceramic - C1, C2



3.3nF Ceramic - C3



3.9nF Ceramic - C4



10nF Ceramic - C5



82nF Ceramic - C17, C18



0.1μF Ceramic - C6, C7, C8, C9



4.7μF Electrolytic - C10, C11



10μF Electrolytic - C12, C13



47μF Electrolytic - C14, C15



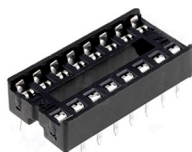
100μF Electrolytic - C16



Total: 18

Integrated Circuits

16-Pin DIP Socket - U1



PT2399 IC - U1



Transistors/Voltage Reg.

2N5458 - Q1

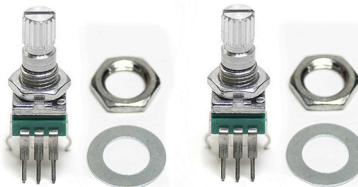


LM78L05 - U2

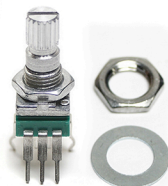


Potentiometers:

B50k 9MM Vertical Pot - POT1, POT2



B100k 9MM Vertical Pot - POT3



1M Single-Turn Trim - TR1



Switches

3PDT Stomp Switch - SW1 (Stomp Chiclet)

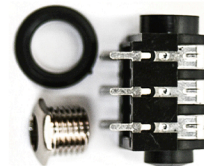


SPST Momentary Switch - SW1, SW2

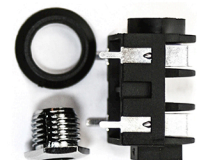


Jacks / Connectors

1/4" Stereo Jack - J1



1/4" Mono Jack - J2



DC Jack (Power Chiclet) - J1



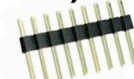
3-Pin Right Angle Header (Power Chiclet) - J2



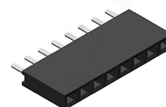
9V Battery Snap Connector



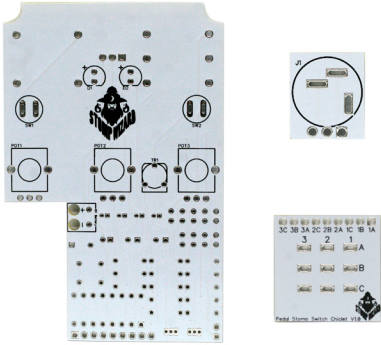
9-Pin Header (Stomp Chiclet) - J1



9-Pin Socket - P2



Other PCBs



Faceplate



#6-32 x 3/8" Button Head Black Screw



125B Aluminum Case



Davies Clone 1900H White Knob

