

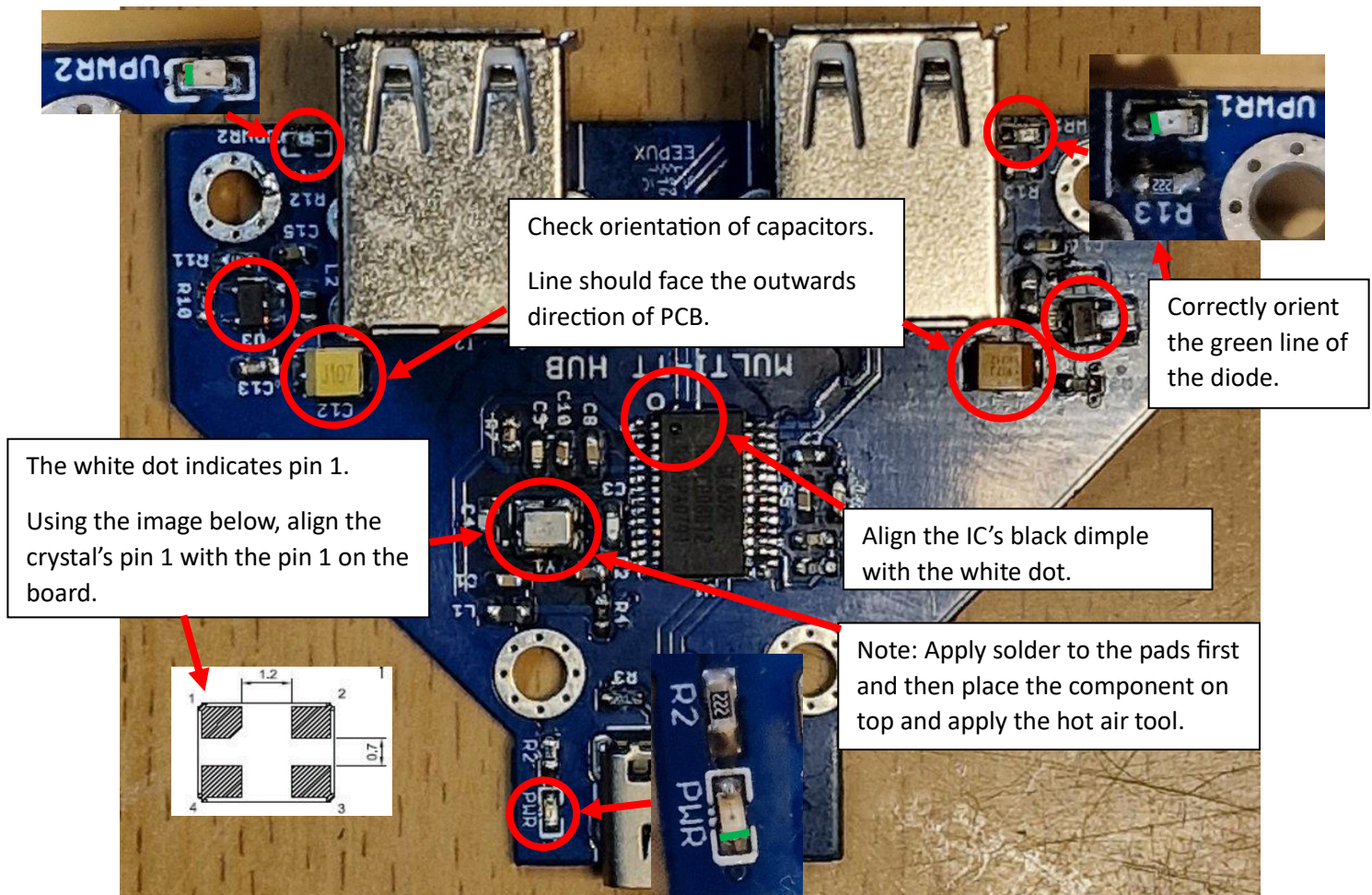
## Thank you for purchasing the USB Multi TT Hub Kit

Please make sure you have all the required components before beginning the assembly. If you have any issues, feel free to contact me via the store message platform.

I hope you enjoy building your kit : )

### Assembly Tips

- 1) Solder the shortest/smallest components first and keep an eye out for shorts between pins.
- 2) Check the USB Hub is detected on the computer before soldering the 2x2 USB type A connectors.
- 3) Make sure the circled component polarity/orientation is correct. Use image below for reference!



*Thank you for purchasing the USB Multi TT Hub Kit*

Components

L1, L2, L3	C15, C16, C1, C5, C8, C9, C10	C11, C12	C6, C7, C13, C14	C3, C4	C2	U1	U2, U3	PWR, UPWR1, UPWR2	R7
---------------	---	-------------	------------------------	--------	----	----	--------	-------------------------	----

R4, R5, R9. R10	R2, R12, R13	R6	R1, R3	R8, R11	Y1	J3	J1, J2
-----------------------	--------------------	----	--------	------------	----	----	--------

PCB

