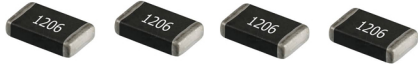


# VCA Visual Bill of Materials/ Parts List

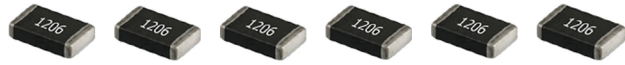
Please note: All resistors, diodes, capacitors and ICs are surface mount unless otherwise noted

## Resistors, 5%, 1/4W

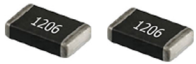
470Ω - R21, R22, R28, R31



1kΩ - R11, R12, R29, R30, R34, R35



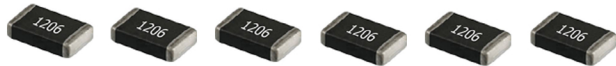
5.1kΩ - R14, R23



7.5kΩ - R13



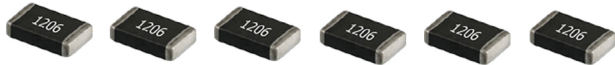
27kΩ - R17, R18, R24, R27, R32, R33



68kΩ - R7, R8



100kΩ - R5, R6, R9, R10, R15, R16, R19, R20



240kΩ - R25, R26



TOTAL:31

## Diodes

BAT54SL - D1, D2, D3



## Capacitors

100pF Ceramic - C1, C2, C3, C4, C11, C12



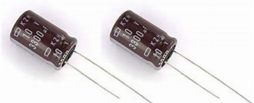
560pF Ceramic - C9, C10, C13, C14



0.1μF Ceramic - C7, C8



10μF Electrolytic (through hole) - C5, C6



TOTAL:14

## Integrated Circuits

TL072 - U4, U5



TL074 - U1, U2



V2164 - U3



TOTAL:5

## Potentiometers

10k Single Turn Trimmer - TR3, TR4, TR5



50k Single Turn Trimmer - TR1, TR2



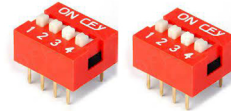
B10k 20mm LED Slide Pot - R1, R2, R3, R4



TOTAL:9

## Switches

4x SPST DIP - SW1, SW2



## Jacks/Connectors

3.5mm Mono Jack - J1, J2, J3, J4, J5, J6



10-Pin Shrouded Header - P1



10 to 16 Power Cable

TOTAL:7

## Other

2.5mm Module Screw



2.5mm Black Hex Head Screw



3mm Module Screw



10mm Standoff



## PCB/PANEL

