

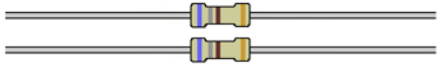
Synthrotek RND Visual Bill of Materials

Resistors

1Ω - R2



680Ω - R13, R14



1kΩ - R3, R5, R8, R9, R10



2kΩ - R11, R12



2.4kΩ - R6



4.7kΩ - R4



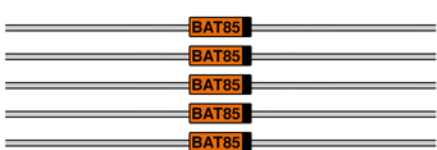
20kΩ - R7



Total=13

Diodes

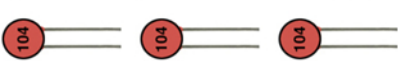
BAT85 - D2, D3, D4, D5, D6



Total=5

Capacitors

100nF Ceramic - C1, C2, C5



22uF Electrolytic - C4



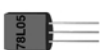
Total=4

Transistors / Voltage Regulators

2N3904 - Q1, Q2



LM78I05 - U2



Total=3

ICs

ATmega88 - IC1



MCP4921 - U1



28 Pin Socket - IC1



8 Pin Socket - U1



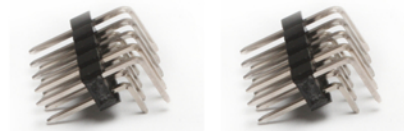
Total=4

Headers

10 Pin Shrouded Keyed Header - J1



5x2 Right Angle Header - J2, J3



3x2 Header - JP1



Total=4

Potentiometers

B10kΩ 20mm Slide Potentiometers - R1*, R2*, R3*, R4*



Total=4

* Denotes component is on Control Board

Synthrotek RND Visual Bill of Materials

Jacks / Switches

3.5mm Mono Vertical PCB Mount - J1*, J3*, J4*
J8*, J9*



SPDT Sub Mini Toggle On-Off-On - SW1*



Total=6

Misc

10mm Hex Standoff & screws



2.5mm Rack Screws



3.0mm Rack Screws

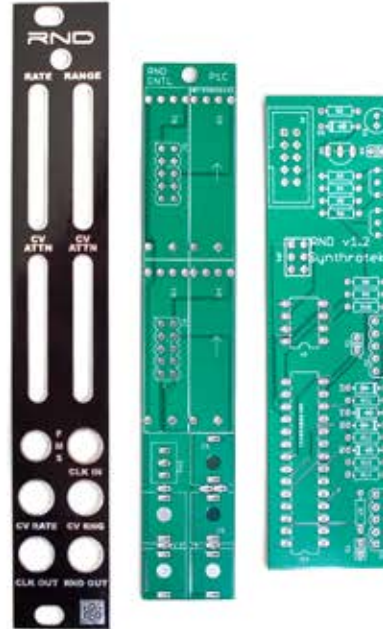


10 to 16 pin Eurorack Power Cable



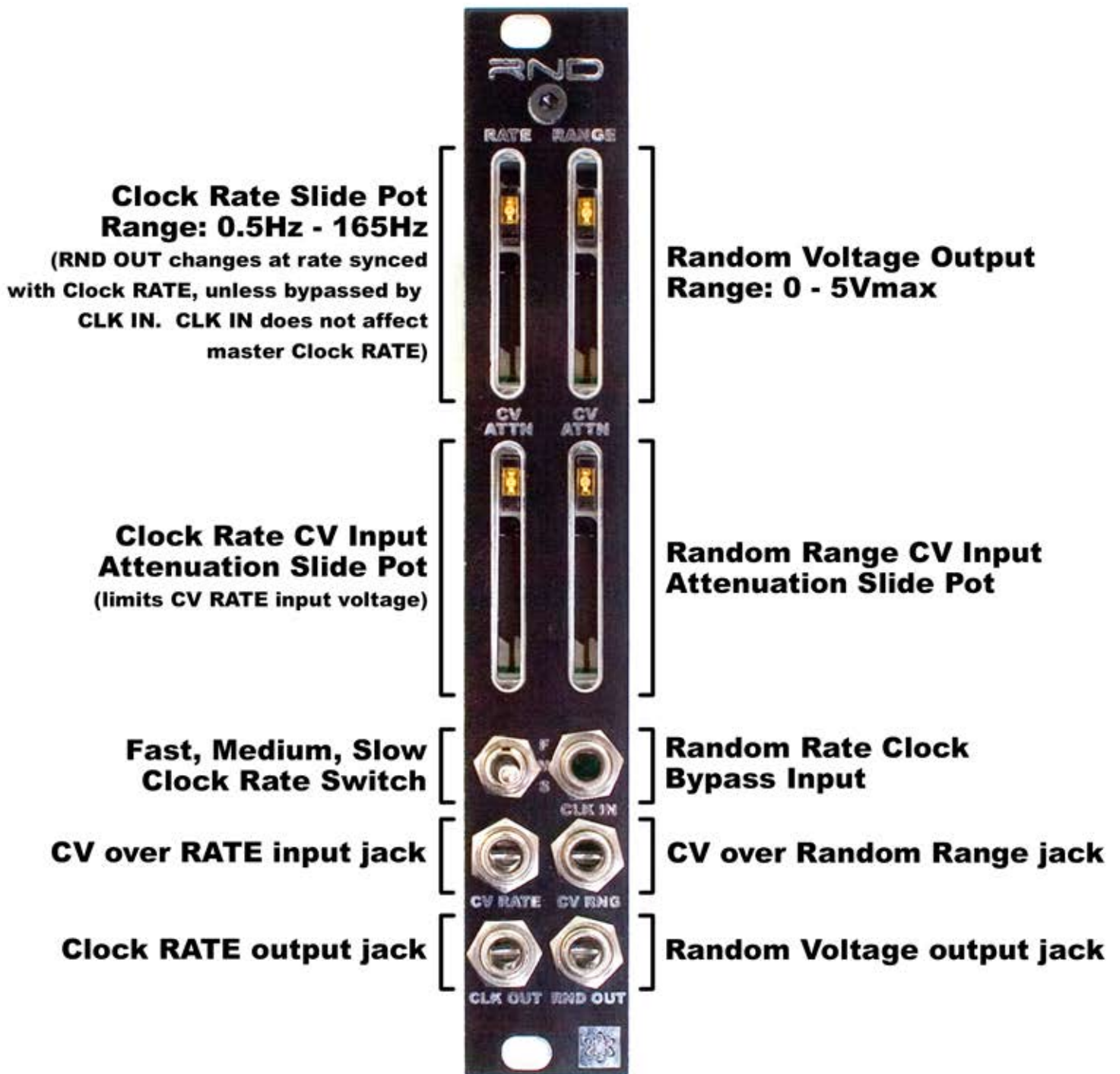
Total=8

PCBs & Panel



Total=3

Synthrotek RND Quick Start Guide



classic noise.