

SYNTHROTEK OPTICAL THEREMIN VISUAL BILL OF MATERIALS / PARTS LIST

RESISTORS

1M ohm - R2



CAPACITORS

100nF Ceramic - C1, C2



INTEGRATED CIRCUIT

8-Pin Socket

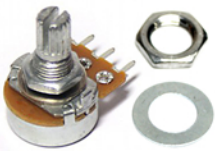


555 Timer

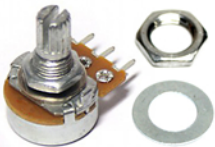


POTENTIOMETERS

1M ohm - Linear - R5



1k - Linear - R4



SWITCHES

SPST - SW1



JACKS / CONNECTORS

3.5mm (1/8") Mono - OUT



1/4" Mono - OUT



OR



9V Battery Clip

OTHER

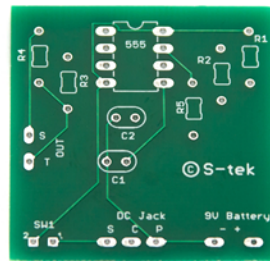
Photoresistor - R1, R3



5 Feet Wire



PCB



2 Knobs



DC Jack

