

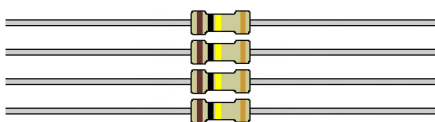
Synthrotek Chaos Nand Synth Console Visual Bill of Materials / Parts List

RESISTORS

1KΩ - R5



100KΩ - R1, R2, R3, R4



total: 5

CAPACITORS

100nF Ceramic - C1, C2, C3, C4



2.2uF Electrolytic - C5



100uF Electrolytic - C6



total: 6

DIODE

5mm Red LED - D1



INTEGRATED CIRCUITS

14-Pin Socket - IC1



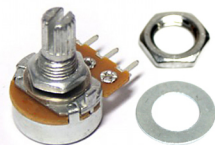
CD4093 IC - IC1



total: 2

POTENTIOMETERS

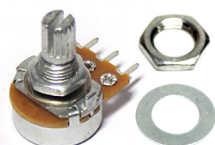
100K Linear - POT3



1M Linear - POT1, POT2



100K Audio - POT4



total: 4

SWITCHES

SPST - SW1



SPDT - SW2, SW3, SW4



total: 4

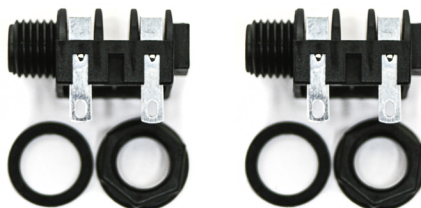
JACKS / CONNECTORS

1/8" Mono Jack - OUT, CV_MOD

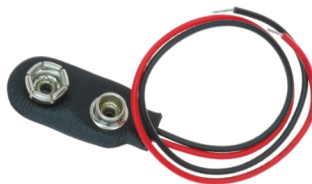


OR

1/4" Mono Jack - OUT, CV_MOD



9V Battery Clip - 9V Batt



DC Jack



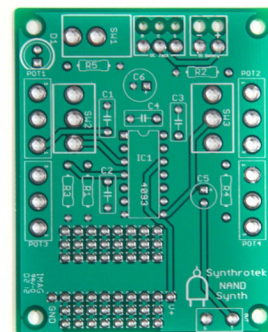
total: 4

OTHER

5 Feet Wire



PCB



4 Knobs

