

TURN Visual Bill of Materials

Resistors:

680Ω - R1, R2



Diodes:

5mm Blue LED - LED1



5mm RED LED - LED2



Switches:

3PDT - On-On Toggle - SW1, SW2



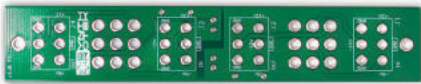
Jacks/Connectors:

Vertical Female 6-Pin Molex Connector- J1, J2, J3, J4



Other:

Panel & PCB



5mm Plastic LED Bezel



15mm Standoff



2.5mm Black Hex Screw



2.5mm Screw



3mm Screw



Total=14

TURN Module Connection Guide

