

Sound Study Modular Midi 2 CV Console Bill of Materials

Resistors

68Ω 1% - R6, R7



220Ω 1% - R1, R2, R3, R4, R5



2.2kΩ 1% - R8



10kΩ 1% - R9



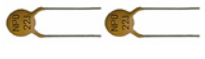
100kΩ 1% - See calibration instructions



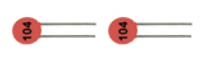
Total=10

Capacitors

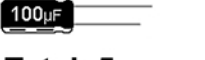
22pF - C2, C3



.1uF - C1, C5



100uF - C4



Total=5

Diodes

3.6v Zener Diode - D1, D2



5mm Green LED - LED1



Total=3

Integrated Circuits

MCP4822 - IC2



8 Pin Socket



ATTINY84 - IC1



14 Pin Socket



Total=4

Jacks

3.5mm Mono Right Angle - CV1, CV2, GATE 1, GATE 2



Right Angle USB 'B' Jack - USB



Total=5

Misc.

20mHZ Crystal - Q1

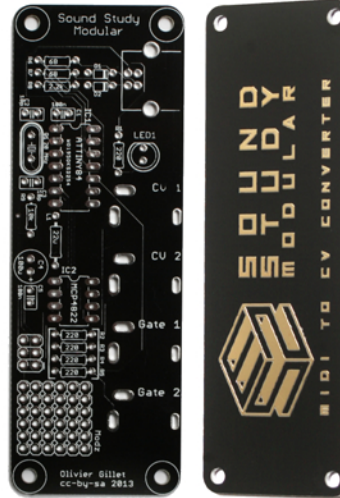


22uH Inductor - L1



Total=2

PCB & Cover



2.5mm Screws



2.5mm Black Hex Screws



11mm Hex Standoffs

