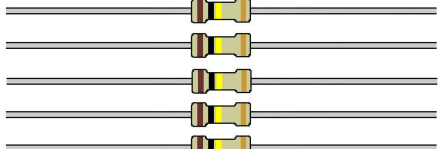
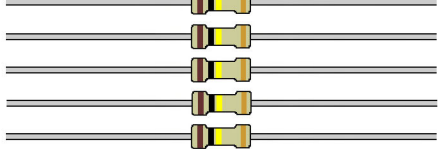
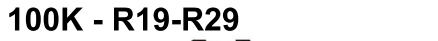
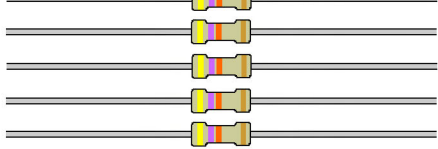
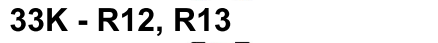
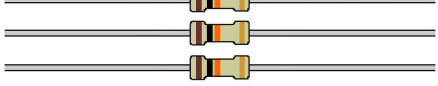
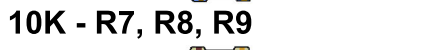
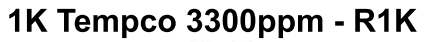


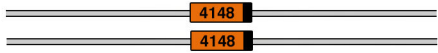
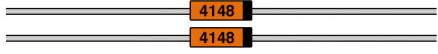
EVENT Visual Bill of Materials

Resistors (5% 1/8W):



Total=34

Diodes:



3mm Blue LED



3mm True Green LED



Total=11

Capacitors:

10pF Ceramic - C8



100pF Ceramic - C7



10nF Ceramic - C6



0.1μF Ceramic- C3, C4, C5



10μF Electrolytic- C1, C2



Total=8

Integrated Circuits:

8-Pin Socket - U2



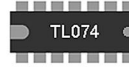
14-Pin Socket - U1



TL072 - U2



TL074 - U1



Total=4

Transistors:

2N3904 - Q1, Q2, Q3, Q4



2N3906 - Q5, Q6



Total=6

Potentiometers:

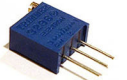
B10K 9mm Pot ONSET1, DURATION1



B100K 9mm Pot - HEIGHT1



50K Multi Turn Trim Pot - Scale 1



Total=4

Jacks/Connectors: PJ301M-12 - J1-J7



10-Pin Shrouded Eurorack Header - J12



Total=8

Other:

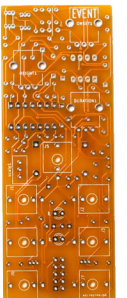
Black Davies Clone 1900H Knob



10-16 Eurorack Power Cable



Front Panel and PCB Board



2.5mm x 6mm Screws



3mm x 6mm Screws



Total=14