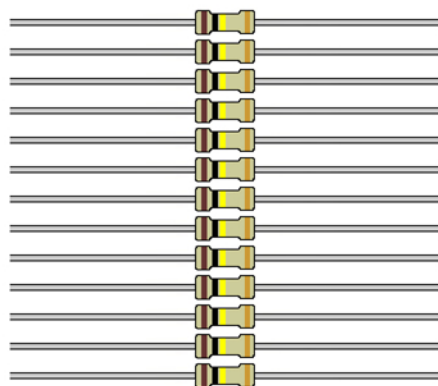
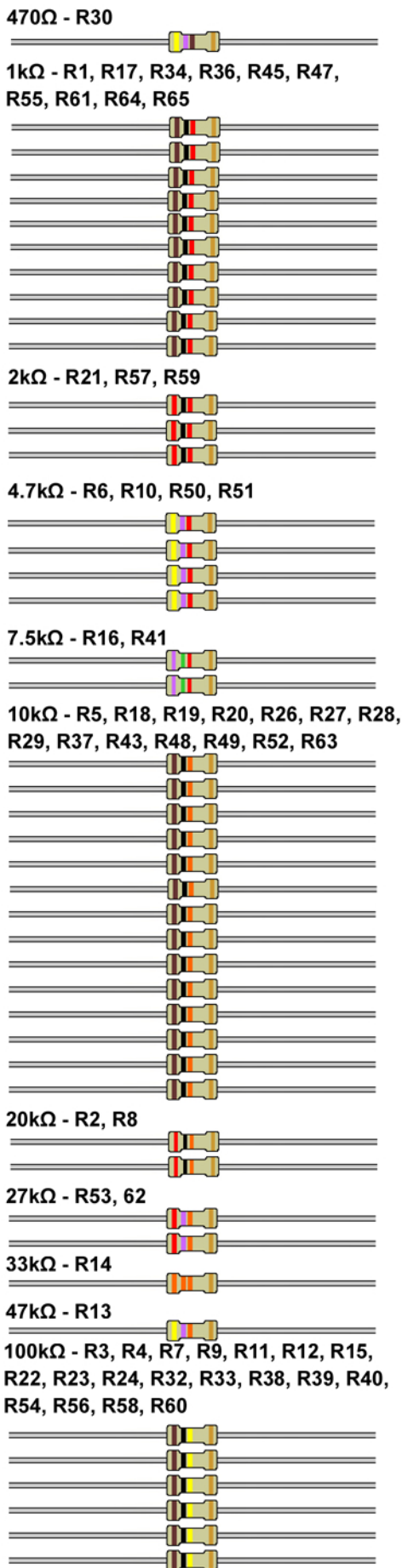


MST Dual Envelope Visual Bill of Materials / Parts List

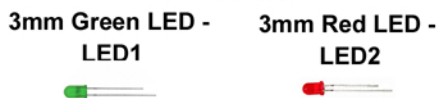
Resistors



680kΩ - R25, R31

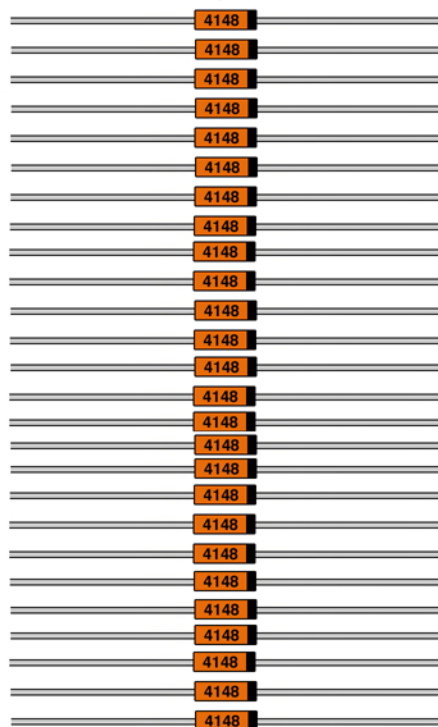
1MΩ - R35, R42, R44, R46

Total: 65 Diodes



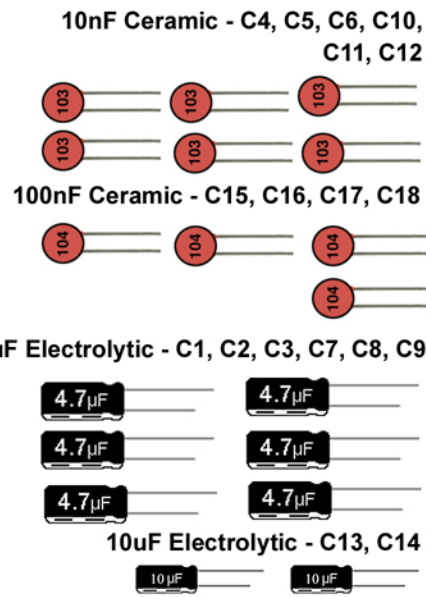
4.3V Zener - DZ1, DZ2

1N4148 - D1, D2, D3, D4, D5, D6, D7, D8, D9, D10, D11, D12, D13, D14, D15, D16, D17, D18, D19, D20, D21, D22, D23, D24, D25, D26



Total: 30

Capacitors



Total: 18

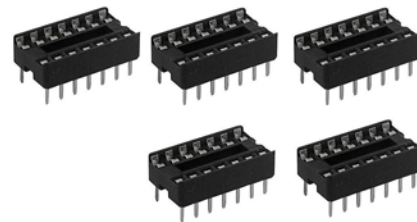
Transistors

2N3904 - Q1, Q2, Q3, Q4



Integrated Circuits

14-Pin Socket - U1, U2, U3, U4, U5



CD4011 - U1, U2



TL074 - U3, U4, U5



Potentiometers

B100k Vertical Mount - VR3, VR6



A1M Vertical Mount - VR1, VR2, VR4, VR5



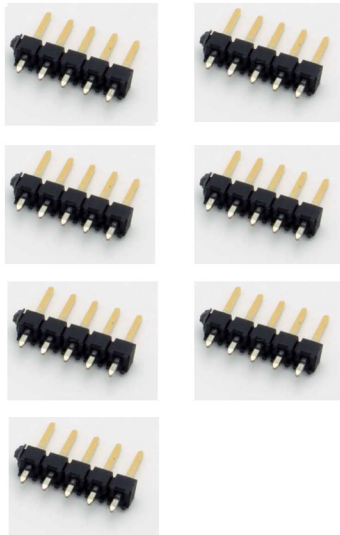
MST Dual Envelope Visual Bill of Materials / Parts List

Switches

SPDT ON/ON - SW1, SW2, SW3, SW4,
SW5, SW6



5-Pin Male Header - J1, J2, J4, J6, J7, J8, J9



16-Pin Power Cable

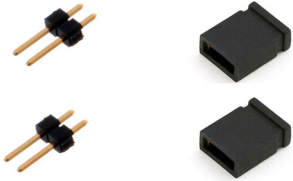


Jacks/Connectors

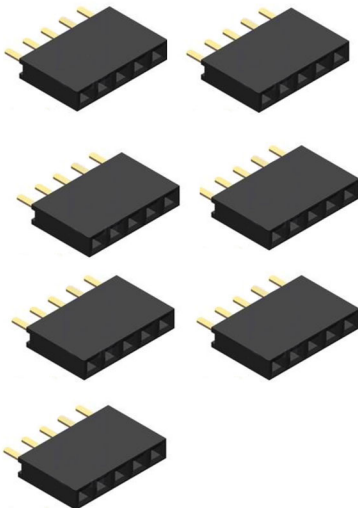
3.5mm Vertical Mount Jack - J10, J11,
J12, J13, J14, J15, J16, J17



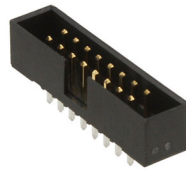
2-Pin Header/Jumper - HDR200, HDR201



5-Pin Female Header - J202, J203, J204,
J205, J206, J208, J209



16-Pin Keyed Shrouded Header -
J200



Others

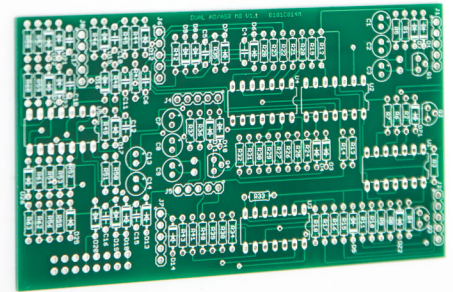
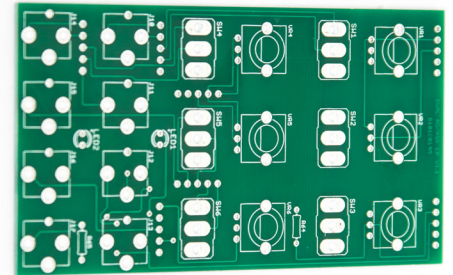
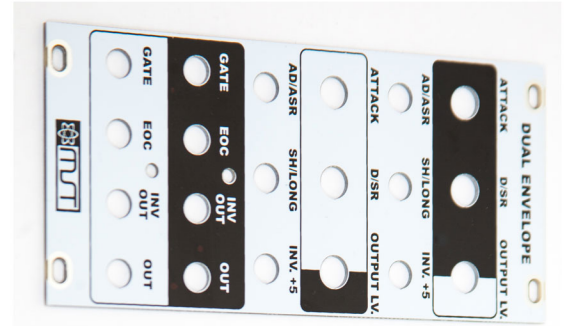
Knobs



2.5mm and 3mm Screws



Panel and PCBs



11mm Standoffs and Screws



MST DUAL ENVELOPE QUICK START GUIDE

