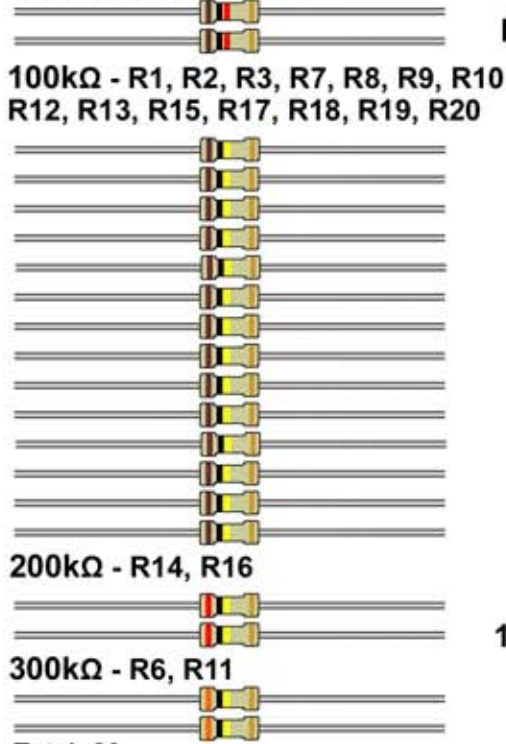
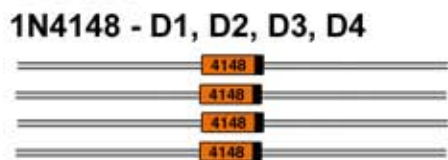


1U Stereo Output Mixer Visual Bill of Materials / Parts List

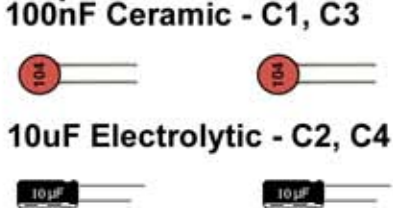
Resistors



Diodes



Capacitors



Integrated Circuits

TL074 - U1



14-Pin Socket - U1



1Foot Wire



Potentiometers

100kΩ Vertical
Mount Potentiometers - R21, R22
R23, R24, R25, R26



Jacks/Connectors

1/4" Vertical Stereo Jack / Nut - J2



3.5mm Vertical Mono Jack / Nut -
J4, J5, J7, J8



3.5mm Stereo Jack and Hex Nut - J6



2-Pin Jumper - J1, J3



3-Pin Header - J1, J3



10-Pin Keyed Shrouded Header -
P1



Others
2.5mm Screws



3.0mm Screws



10 to 16-Pin Power Cable



Panel and PCB



Knobs



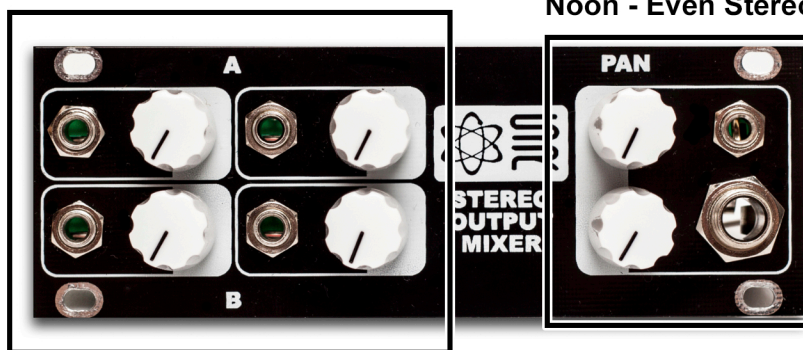
1U Stereo Output Mixer Quick Start Guide

When in 1x mode the dial at noon is 50% gain
full CW is 1x gain

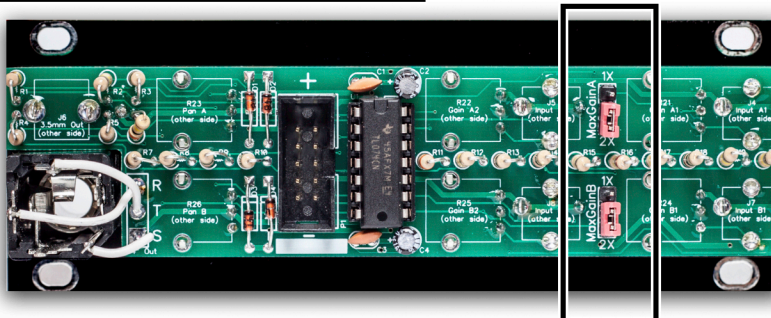
When in 2x mode the dial at noon is 100% and
full CW is ~ 2x gain

Pan pots per channel:

Fully CCW - Left Pan
Fully CW - Right Pan
Noon - Even Stereo



3.5mm & 1/4" Stereo
Outputs are common



Jumper Select 1x or 2x Gain Per Channel

Product Features

10 Pin Keyed Eurorack Power
24HP
Module Depth: 32mm
Mix Audio and CV Signals

Current Draw

+12: 13mA
-12: 10mA
+5: does not use